

WEATHER

	Min.	Max.	Precip.
Thursday, Feb. 2	2	23	Trace
Friday, Feb. 3	-3	22	3.00
Saturday, Feb. 4	-1	21	0.03
Sunday, Feb. 5	-1	21	0.02
Monday, Feb. 6	-1	12	0.08
Tuesday, Feb. 7	-4	14	0.01
Wednesday, Feb. 8	3	21	0.00

The Chelsea Standard

QUOTE

"There is only one thing in the world worse than being talked about, and that is not being talked about."

—Oscar Wilde.

ONE HUNDRED-EIGHTH YEAR—No. 35

12 Pages This Week

Plus 4-Page Supplement

CHELSEA, MICHIGAN, THURSDAY, FEBRUARY 9, 1978

15c per copy

SUBSCRIPTION: \$6.00 PER YEAR

Cagers Lose Contests With Milan, Dexter

Faced with a top-ranked Milan team last Friday, Chelsea's varsity basketball squad struck with aggressive force on the way to what appeared would be a major upset.

But deep foul trouble late in the third period sent the team into a downspin that eventually left the Bulldogs with a heart-breaking 44-50 loss.

"Although we lost by a six-point margin, it was a two-point game," Chelsea Coach Robin Raymond said. "We had the lead all the way through until the middle of the third quarter when Milan grabbed its first lead—a 38-33 point spread."

Chelsea moved out with a 13-9 lead in the first quarter and then proceeded to extend its advantage to 25-20 at half-time.

"Our defense in the first half was the best we had all year," Coach Raymond reported. "We forced Milan into nine turnovers in the half, most of which were attributed to our defense."

(However, both teams were plagued by fouls in the first two quarters with Chelsea recording 12 and Milan 11.)

Returning to action in the second half, Chelsea exploded, with an 11-point lead midway through the third period. Then the trouble began.

Marc Feeney picked up his fifth foul for charging and Milan sank both of its free throws to cut Chelsea's lead to nine. Next time down the court, Jerald Benjamin picked up his fifth foul for holding, and although it was an offensive foul, Coach Raymond questioned the referee's call and was rewarded with a technical. Again, Milan made both its free throws to trail the Bulldogs by five.

Then, on Chelsea's third successive trip down the court, Dave Schrotenboer was retired from the game on his fifth foul, and once more Milan had the opportunity to score.

In short, two minutes after they were ahead by 11, the Bulldogs found themselves minus three starters and leading by only two points.

Chelsea attempted to slow down the pace with a delay game, but two turnovers in two possessions allowed Milan to move into a two-point lead which they then increased to 38-33 by scoring six consecutive points.

The Bulldogs regrouped, picked up the pace, and scored seven straight points, four of which came from Jesse Coburn. It appeared Chelsea had recovered as the team took back the lead, 40-38.

However, Milan scored two quick baskets to edge past the Bulldogs (Continued on page five)

Finding the hoop was definitely not one of Dexter's problems here Tuesday evening as they blazed to a 70-49 win over Chelsea in a Southeastern Conference match-up that left the two teams tied for third in the conference standings.

The Dreadnaughts leaped out to a 29-16 lead in the first quarter and proceeded to build it into a 44-21 half-time advantage.

"They were really hot in the first half," Chelsea Coach Robin Raymond reported. Dexter was 21 for 33 from the field in the first half for a 64 percent shooting average, while Chelsea was only 10 for 34 for 29 percent.

Returning to the court in the second half, the Bulldogs managed to outscore Dexter, 28-26, by playing even with their neighboring rivals but it wasn't enough to change the decision.

Chelsea outbounded Dexter in the game, 38-36.

High scorers for Chelsea were Marc Feeney with 13 points, Jesse Coburn with 8, Dave Schrotenboer with 8, Matt Feeney with 5, and Scott Price with 5. Schrotenboer led the rebounding with 13, followed by Coburn with 9.

With a 5-4 conference record and 7-8 overall, Chelsea will face Saline tomorrow, Feb. 10, 8 p.m. The game will be played here and has been billed the "biggest one of the season."

Hospital Asks For Approval To Expand

Chelsea Community Hospital has asked the State for approval of a \$1,300,000 expansion project that includes increasing its facilities from 100 to 120 beds.

The project, if approved, would increase the number of psychiatric beds from six to 16, and would reclassify 19 skilled nursing beds to 12 substance abuse beds and seven medical-surgical beds.

In addition, approval of the project would result in construction of a therapy services area and an administrative facility. Also, the kitchen and dining room would be expanded, and the main corridor remodeled.

In keeping with federal regulations requiring approval prior to undertaking a change in service, construction, or both, Chelsea Community Hospital has submitted an application for a Certificate of Need.

The application is under review by the Division of Health Facility Planning and Construction, Michigan Department of Public Health.



BLIND STUDENT HELPED: Theresa Murphy, center, a student in Nancy Cooper's special education class at Chelsea High school, holds up an electronic calculator equipped with a voice which was presented to her Tuesday evening by the Chelsea Lions Club. Though legally blind and handicapped by cerebral palsy, Theresa will now be able to increase her independence by using

the calculator to perform a variety of everyday functions from shopping and counting change, to balancing a bank account. With Theresa in the photo, from left, are Herb Pearson and Louis Depping, both members of the local Lions Club, Mrs. Cooper, and Tom Dmoch, Lions Club president.

St. Barnabas Planning To Build Addition

At a regular meeting Feb. 1, the Bishop's Committee of the St. Barnabas Mission voted unanimously to impanel a committee to study the feasibility of a new addition to the church. Named to co-chair the Building Committee were Arthur Lindauer, a prominent local architect, and Daniel Ramsey, warden of St. Barnabas.

Appointed to complete the panel were Carol Oxner, Dorothy Shipley, Thomas Donkin, Ronald Buckenberger and Douglas Beaumont.

The new addition is to be a single story, ground floor construction maintaining an architectural form that will harmonize with the existing church building.

One of the primary reasons for the proposed addition is the need for a fellowship area that would be more accessible to older church members than the present facilities located in the church basement.

The main areas of the new building will be divided into a large social or educational room with modern kitchen facilities addition. (Continued on page three)

Lions Club Provides Calculator For Blind Special Ed Student

The Chelsea Lions Club recently bought an electronic calculator with speech for a blind special education student at Chelsea High school. The student, 18-year-old Theresa Murphy, is in Nancy Cooper's special class.

The calculator speaks as numbers are touched and the answer is also spoken. Theresa cannot see a regular calculator and has cerebral palsy. She has very little feeling and strength in her hands, thus making it impossible to read a braille calculator. She is legally blind.

The calculator will be used to help Theresa gain independence. She can use it for personal business such as banking, making change, shopping, and classroom math. Hopefully her independent living skills will increase as a result of having this calculator.

The calculator was purchased from the American Foundation for the Blind. Its 24-word vocabulary announces every entry and result, offering blind users such as Theresa a new way to make math personally useful. The calculator is portable, measuring 7 1/2" x 4 1/2" x 1 1/2" and weighs less than a pound. It does six basic

multiplying, dividing, percents and square roots—and has an accumulating memory, automatic constant, and a change of sign key. It will run from a wall plug or has internal batteries capable of more than 3 hours of continuous use (with speech) before recharging is needed.

The calculator also has a speak key which can be pressed repeatedly to announce what is on display without making further calculations, and the voice of the calculator can be raised or made silent if Theresa is working around other students. She can use an earphone for private listening.

Theresa uses her calculator when shopping—checking to make sure her change is correct. She also uses it to check the classes' Housekeeping Business checkbook and accounts. Theresa hopes to eventually be out on her own, and being blind means many modifications and adjustments will have to be made before this can happen successfully and safely.

Her mental impairment and cerebral palsy add to the barriers that must be surmounted. The Lions Club has helped Theresa considerably in her goal of independence.

Theresa is the daughter of Charles and Margaret Murphy of Gregory.

Snowbanks, Ice Blamed for Crashes

While crime in Chelsea hovered near an all-time low this past week, officers on the local force were kept busy investigating a number of fender benders in the village that were brought on by a combination of icy road conditions and 15-foot snowbanks that obscured the vision of motorists.

On Monday, Jan. 30, an officer was dispatched to the scene of a minor accident at the M-52 and Old US-12 intersection. Two cars had collided after the driver of one, hampered by a slippery road and overcast skies, failed to see an oncoming vehicle while making a right turn and struck the oncoming car on the right side.

Falling snow and a snowbank at the intersection of Buchanan St. and Main St. were blamed for a second two-car crash Wednesday afternoon, Feb. 1. According to police reports, a Dexter man attempting to turn right onto Main St. from the eastbound lane of Buchanan St., was unable to see to his right, started to advance in front of the stop sign, and was struck by a truck driver entering Buchanan St. from Main

St. who had turned the corner too sharply because of snow.

Last Thursday, two accidents occurred, one near the Hayes St. and W. Middle St. intersection, and the other near the corner of S. Main and Old US-12.

In the former collision, a truck driven by a Chelsea man was attempting to back up and turn around on northbound Hayes St. because a train was blocking the road. He did not see the car waiting behind him and consequently struck it, damaging the front of the auto.

The latter accident Thursday, again attributed to wet roads and ill-placed snowbanks, came after the driver of one car was unable to see traffic on Main St. while backing out of his driveway between two snowbanks. Upon inching out of the drive, he noticed an oncoming car but was still moving and could not stop in time to avoid ramming it.

In yet another accident on Saturday, Feb. 4, two cars were turning right from Main St. onto Middle St. when the driver of the second vehicle failed to see the car ahead of him and struck the lead car in the rear.

Dial-A-Ride May Be Coming to Chelsea

Ann Arbor Transportation Authority's (AATA) purple and maize Dial-A-Ride buses will begin operating in Chelsea, Manchester and the far western part of Washtenaw county this spring if AATA and local governing bodies in the new service area reach an agreement on funding.

The AATA board approved a contract Wednesday, Feb. 1, under which the state will pay \$20,000 of a projected \$108,300 bud-

get for a one-year demonstration of the operation which will give priority to the elderly and handicapped.

The state approved the contract Jan. 25.

However, the state funds, combined with an estimated \$8,300 in passenger revenues, will still leave AATA about 10 percent short of its projected budget for out-county expansion of Dial-A-Ride. (Continued on page six)

CHS Matmen Place Second In SEC Meet

Chelsea placed 10 of its 13 wrestlers in Tuesday's Southeastern Conference meet at Dexter, but had to settle for runner-up honors in the eight-team tournament after Saline blitzed the field with 158 points, some 13 points ahead of the Bulldogs.

Final team scores in the meet were Saline 158, Chelsea 145, Novi 143, Dexter 129, South Lyon 116, Brighton 75, Milan 39, and Lincoln 3.

Winning league titles for the Bulldogs were Mike Young and Leon Brown, while Bart Bauer, John Whitaker and Todd Headrick finished second in their classes.

Placing third for Chelsea were Chuck Young and Alan Augustine. John Bulick, Terry Thompson and

Brian Van Reesema finished fourth. Bob Beeman picked up a win at 98 lbs. by overpowering his Milan opponent.

"It was a good effort by the team even though we had some disappointments," Chelsea Coach Richard Bareis said. "Besides the fine performances by Mike Young and Leon Brown, Bart Bauer, John Whitaker, Chuck Young and Alan Augustine showed plenty of promise for next year."

Augustine was singled out by Coach Bareis for doing a fine job in the meet considering the fact he had not won a match before Tuesday's competition.

The conference meet wrapped up the season for the Bulldogs who finished third in final league standings.

Legion Winter Carnival Has Record Crowd

A record turnout that "went beyond our wildest expectations," according to Legionnaire Pat Merkel, sent proceeds from the Chelsea American Legion's fifth annual Winter Carnival last weekend soaring to an all-time high of \$4,800.

"The carnival was jam-packed all three days with hundreds of people," Merkel reported, "and a capacity crowd filled the Legion headquarters for the Sunday afternoon concert by SCAT."

Profits from the event will be used by Legionnaires to help pay the mortgage on their newly expanded headquarters and for a variety of community service projects.

A highlight of the carnival was the annual Fishing Derby which began Friday evening and continued through 5 p.m. Sunday. Some 90 fishermen competed in the event held on Cavanaugh Lake in clear, but chilling weather. Winning the panfish category

was Todd Rowe with a 9 1/2" catch. His prize was a propane lantern. Tom Finch placed second with a 6 3/4" fish and received an ice chest for his efforts. Finishing third was Rick Finch with a 9" panfish. His reward was a flashlight and fishing pole.

No pike were caught, but a good showing was made by contestants in the perch category. Sweeping first- and second-place was Jim Wutke with a 10 1/4" and a 10" perch. His two prizes were an ice pack and a minnow bucket. Coming in third was Ed Dickleman with a 9 1/2" perch. He received a flashlight and a fishing pole.

Some 70 contestants entered the carnival's euchre tournament, 16 more than last year. Taking championship honors in the competition was Bill Snay while George W. Mayer topped the field with the most lone hands.

Numerous area business firms donated the contest prizes.

Snowmobile Safety Course Scheduled

The Washtenaw County Sheriff's Department will conduct a free snowmobile safety course for youngsters between the ages of 12 and 16, Feb. 14-16, 7 p.m. to 9 p.m. at Beach Middle school.

The course will include discussion of safety rules, instruction on the operation of snowmobiles, and supplementary films.

Upon completion of the course, participants will receive a certificate permitting them to operate snowmobiles in the presence of an adult, 16 years of age or older.

Michigan state law requires all youngsters between the ages of 12 and 16 complete a snowmobile

safety course before being issued a permit to operate a snowmobile in the state. The upcoming course is designed to fulfill that requirement.

Enrollment is open to any child who will be 12 years old by the summer of this year, through those 16 years old. There is no class limit.

Those planning to enroll are asked to call Tom McElroy at 475-8641, days, or 475-9426, evenings, prior to the first session.

Sponsored by the Inverness Snowmobile Club, in conjunction with Chelsea schools, the free snowmobile course was formerly operated by the Michigan Department of Natural Resources.

Three New Directors Join Hospital Board

Paul E. Mann, chairman of the Board of Governors of Chelsea Community Hospital, has announced the election of three new members to three-year terms on the board.

They are Mrs. Jane Schairer, Walter F. Hamilton, Jr., and Robert H. Thornton, Jr.

Jay L. Bradbury, a current member of the Board, was elected for another term.

Mrs. Schairer and Bradbury are residents of Dexter, while Hamilton and Thornton reside in Chelsea.

Mrs. Schairer is director of Christian Education for the Chelsea Methodist church and serves as secretary to the Board of Trustees of the Detroit Conference

Methodist Retirement Homes.

Hamilton is vice-president of Edwards Brothers, Inc., in Ann Arbor. He has served as president of St. Paul United Church of Christ, and as chairman of the Citizen's Advisory Committee to Chelsea schools.

Thornton is president of Thornton Realty which has offices in Chelsea, Ann Arbor and Stockbridge. He is a past president of the Ann Arbor Board of Realtors and is a member of the Michigan Board of Realtors.

Bradbury is a farmer active in 4-H and other farm organizations. He is a former Washtenaw County Commissioner and currently serves on the Washtenaw County Mental Health Board.



CAFETERIA CARNIVAL CAPERS: Posing under their handiwork, from left, are sophomores Kelly Headrick, Lee Ann Owings and Sally Vaughn who all helped decorate the Chelsea High school cafeteria Tuesday evening in preparation for "Sophomore Day" on Wednesday. "Sophomore Day" was the third day of this week's first annual Winter Carnival at the high school which was organized to promote school spirit and lead Chelsea cagers to victory over Saline Friday, a victory that lies at the end of a rainbow, according to the Class of '80.

Established 1871 **The Chelsea Standard** Telephone 475-1371
 Excellence Award By Michigan Press Association
 1951-1952-1960-1964-1965-1966
 Walter P. Leonard, Editor and Publisher

Published every Thursday morning at 300 North Main Street, Chelsea, Mich. 48118, and second class postage paid at Chelsea, Mich., under the Act of March 3, 1879.

Subscription Rates (Payable in Advance)
 In Michigan: One Year\$6.00
 Six Months\$3.50
 Single Copies\$.20
 Outside Michigan: One Year\$8.50
 Six Months\$4.50
 Single Copies\$.25

MEMBER **NATIONAL NEWSPAPER ASSOCIATION** - Founded 1888
 National Advertising Representative: MICHIGAN NEWSPAPERS, INC.
 257 Michigan Ave.
 East Lansing, Mich. 48823

JUST REMINISCING

Items taken from the files of The Chelsea Standard

4 Years Ago...

Thursday, Feb. 14, 1974—

The trials and tribulations of more than a century of existence will be commemorated Sunday when Chelsea's First Congregational church celebrates its 125th anniversary. An Estey Reed organ, saved from the fire that destroyed the church in 1894, will be on display in the church fellowship room as a symbol of the church's 125-year heritage.

Carl Asher has been appointed program therapist for the newly-created alcohol abuse program at Chelsea Community Hospital. The program is designed to include information and education about alcoholism, medical treatment, and individual and family counseling for households affected by alcohol abuse.

Harold Pennington, currently a Chelsea Village Council trustee and past village president, heads the Independent Party ticket as the nominee for village president in the upcoming March 11 village election.

In last Thursday's district Ag-Skills contest at Chelsea High school, the CHS chapter of Future Farmers of America took first-place in the parliamentary procedure division. Members of the gold-certificate winning team are Neal Bollinger, Joe Lantis, Tom Clemans, Mark Stapish, Jerry Huelh, Paul Dowhal and Doug Welshans.

Howell

Livestock Auction

Starts 1 p.m. Every Monday
 Mason 676-5400

The Wise Owl Says Ship to Howell
 Phone 546-2470 Bim Franklin
 Market Report for Feb. 6

CATTLE

Bulk 64-Choice Steers, \$45 to \$47
 Few High Choice Steers, \$47 to \$47.50
 64-Choice Heifers, \$40 to \$44
 Fed Holstein Steers, \$38 to \$41
 Ut-Std., \$38 and down.

COWS

Heifer Cows, \$32 to \$34
 Ut-Commercial, \$30 to \$32
 Corner-Cutter, \$28 to \$30
 Fat Beef Cows, \$28 to \$32

BULLS

Heavy Bologna, \$32 to \$41
 Light and Common, \$32 and down.

FEEDERS

400-600 lb. Good-Choice Steers, \$40 to \$48
 600-800 lb. Good-Choice Steers, \$35 to \$42
 300-600 lb. Good-Choice Heifers, \$35 to \$41
 300-500 lb. Holstein Steers, \$30 to \$36
 500-800 lb. Holstein Steers, \$25 to \$30
 Common and Medium, \$25 and down.

CALVES

Prime, \$70 to \$78
 Good-Choice, \$60 to \$70
 Heavy Deacons, \$40 to \$60
 Cull & Med., \$15 to \$25
 Calves going back to farms sold up to \$40

SHEEP

Woolled Slaughter Lambs, Spring: Choice-Prime, \$61 to \$63
 Good-Utility, \$58 to \$61
 Slaughter Ewes, \$18 to \$24
 Feeder Lambs, All Weights, \$55 to \$60

HOGS

210 to 240 lbs., No. 1, \$48 to \$49
 200-250 lbs., No. 2, \$46 to \$48
 Heavy Hogs, 250 lbs. up, \$40 to \$46
 Light Hogs, 200 lbs. down, \$30 to \$40

Sows

Fancy Light, \$58 to \$61
 200-250 lbs., \$40 to \$42
 500 lbs. and up, \$42 to \$43.50

Boars and Stags

All Weights, \$32 to \$36.50

Feeder Pigs

Per Head, \$18 to \$45
 Est. 40 lbs. pigs, \$30 to \$35

HAY

1st Cutting, per bale, \$1.25 to \$1.85
 2nd Cutting, per bale, \$1.50 to \$2.15

STRAW

Per Bale, \$8 to \$1.25

COWS

Tested Dairy Cows, \$300 to \$600
 Tested Beef Type Cows, \$200 to \$400

NOW ON TUESDAY NIGHTS CHICKEN BUFFET

with our Famous Deep-Fried Chicken
 and SPECIAL BARBECUED CHICKEN
 also mashed potatoes and gravy, dressing, and salad bar.
 Serving from 4:30-9:00

at the **CAPTAINS TABLE**
 8092 MAIN ST., DEXTER PH. 426-3811

MICHIGAN MIRROR

By Warren M. Hoyt, Secretary, Michigan Press Association

PBB Has Affected Public

More than one-third of Michigan consumers have changed their food buying habits because of the PBB—contamination incident.

The declaration comes as a result of a Market Opinion Research study, commissioned by the Department of Agriculture, to determine to what effect the mix-up of the fire retardant with cattle feed has had on the consuming public.

Additionally, results of the study will be used to stage an informational, educational and promotional campaign to build confidence in Michigan agricultural products.

The survey cost taxpayers \$13,600 which came from a total of \$250,000 to stage such a promotional campaign.

The survey showed the state-wide study (a representative sample of 800 citizens) revealed that 98 percent of Michigan consumers are aware of PBB, and the mix-up which led to it ending up in the food chain.

Only 3.3 percent of the consumers polled have cut their purchases of beef because of the contamination.

Confidence in Michigan beef is not, however, as high as in other markets sampled for comparative attitudes.

About 52 percent of Michigan consumers believe beef produced in the state is the same or of better quality than that produced elsewhere, while 61 percent of Cincinnati consumers put Ohio beef on that category and 76 percent of Indianapolis consumers put Indiana beef as the same or better than other states.

Confidence in Michigan dairy products is slightly higher.

The Department of Agriculture is slightly above the average for its performance, with PBB the reason given by half of those interviewed for giving the agency low marks.

Committee System Doesn't Always Work

A glaring failure of the legislative committee system became obvious last week with the Senate rejecting a motion to discharge a committee of further consideration of legislation which basically it has not considered.

Non-consideration of the bill prompted some Senate members to try to pry the bill from the Conservation Committee.

The issue is state-wide land use with an eye toward a master plan for the future to which the committee chairman Sen. Joseph Mack (D-Ironwood) is violently opposed.

This opposition is depriving the full Senate and the people of the state of the right to have the bill considered in an open floor debate followed by a vote to make elected representatives declare approval or opposition.

The sanctity of the committee chairman's wishes toward any piece of legislation referred to that panel was upheld even though Mack has not fulfilled promises of airing the bill in public forums.

Mack has held hearings, but they have all been within the boundaries of the district of sponsor Sen. Richard Allen R-Alma. Mack has also stacked those hearings by calling them hastily and inviting parties that would be naturally opposed.

The "hearings" basically boiled down to a pop rally against the proposed legislation with sponsor Allen not even informed of times and places of some meetings.

A majority of the Senate members bought the argument presented by Mack that hearings have been held and major opposition has been expressed. They also accepted his line that further hearings are necessary before the committee could begin actual work on the legislation.

Senators declared the committee system did work and it was an important part of government when they cast votes against discharge.

All 24 Democratic members are committee chairman, if they do not serve on the powerful Appropriations Committee, and feared a vote to discharge the Conservation Committee was a vote eroding the committee structure and more importantly to them, a vote eroding the power enjoyed by that chairman.

Larry B. Lambert

Promoted in Air Force

Larry B. Lambert, son of Mr. and Mrs. Bruce Lambert of 8400 Huron River Dr., Dexter, has been promoted to technical sergeant in the U.S. Air Force.

Sergeant Lambert, an aircraft maintenance technician, is assigned at Anderson AFB, Guam, with a unit of the Strategic Air Command.

The sergeant is a 1966 graduate of Trimble (Tenn.) High school.

FARM INCOME TAX

Since 1953

Chelsea Bookkeeping & Tax Service

202 First National Building
 Ann Arbor, Mich. 48104
 769-0924



WCCOA ELECTS: Norman L. Raupp, pictured above, Administrator of Gilbert Residence in Ypsilanti, was elected president of the Washtenaw County Council on Aging at the organization's January meeting. Four others also elected to office in the county-wide agency at the January meeting include Victor Turner, president-elect; the Rev. Fred R. Holtfreter, vice-president; Dr. David Stelnke, secretary; and T. N. Helber, treasurer. Dr. Dayton Benjamin continues as the council's executive director. The organization is headquartered at 505 Catherine St., Ann Arbor.

The number of women in the labor force nearly doubled between 1950 and 1974, according to "U.S. Working Women, a Chartbook," issued by the U.S. Department of Labor's Bureau of Labor Statistics.

Girl Scout Cookie Sale Is Extended

Because the recent snowstorm caused the cancellation of school and Girl Scout troop meetings, Huron Valley Girl Scout Council has announced that the order-taking period for Girl Scout cookies has been extended by one week.

This would make order-taking for the annual sale from Jan. 30 through Feb. 19.

The goal for this year's sale is 400,000 boxes sold. Profits from the sale will help pay for a new troop house now under construction at Huron Valley Council's Camp Crawford.

Girl Scouts, ages 9 to 18, participating in the sale have a new cookie to offer this year—the Snow Drop, chocolate cake covered with marshmallow frosting. In addition, the five traditional flavors will again be offered this year at just \$1.25.

Huron Valley Girl Scout Council, a United Way agency, provides Girl Scouting to approximately

18,000 girls in Washtenaw, Livingston, western Wayne and northern Monroe counties.

Dial-A-Garden

Dial-A-Garden, the system of pre-recorded daily gardening tips is sponsored by the Washtenaw County Co-operative Extension Service. The system is in operation 24 hours per day, seven days per week. Interested persons are invited to call 971-1122 at their convenience and receive timely, up-to-date gardening information.

Next week's Dial-A-Garden topics are:

Friday, Feb. 10—"Prune Fruit Trees While It's Cold!"
 Tuesday, Feb. 14—"Keeping Cut Flowers Fresh!"
 Wednesday, Feb. 15—"Caring for Potted Tulips!"
 Thursday, Feb. 16—"Home and Farm Day Coming Up!"

- ★ A 24-hour Hotline
- ★ Accurate and reliable drug information and identification
- ★ Extensive referral information
- ★ Free long term counseling
- ★ Drug Education presentations
- ★ Assertiveness, empathy and suicide prevention training

CALL 994-HELP

(994-HELP/994-HELP/DRUG HELP is Federally licensed for substance abuse counseling.)

WOMEN AND THE LAW

A Short-Course Offering by

WASHTENAW COMMUNITY COLLEGE

Jean King, well-known Ann Arbor attorney, again combines skill and background to explain the law as it applies to women, covering such vital topics as:

- | | | |
|------------------|----------------------|--------|
| Employment | Reproductive Freedom | Sports |
| Credit | Divorce | ERA |
| Housing | Property | Names |
| Organizing Women | Insurance | Rape |
| Education | Abortion | |

This 7-week, 1 credit hour course meets Wed., 7:30-10 p.m., starting Feb. 8, in Room 2908 LMC Building, Main Campus. REGISTER FOR \$-S 105 Women and the Law.

ATTENTION: This semester, for the first time, Ms. King will offer an advanced section of Women and the Law. Entitled \$-S 106. Women and the Law, Advanced, the course starts Thursday, Feb. 9, 7:30-10 p.m. at Ann Arbor Pioneer High School, for 7 weeks. Emphasis will be on individual cases and the process involved in making laws.

Students May Register for either class the 1st night of class
 For further information, call 973-3302 or 973-3342

An Affirmative Action/Equal Opportunity Institution.

double
 double
 your
 money
 with compound interest

the one
 sure way
 to build a
 fortune

One of the most important, but overlooked, features of savings is the magical effect of compound interest. If money is deposited

and the interest it earns never withdrawn, the money grows at an amazing rate. Money in most Ann Arbor Federal Savings certificates doubles every 10 years.

Thus, if a person 40 years old with \$25,000 (in savings, cash, value insurance, etc.) puts it into a certificate account at Ann Arbor Federal Savings, it will grow to \$50,000 by age 50. By age 60 it will have grown to \$100,000 without adding a penny of his paycheck.

For the person in his mid-fifties, with retirement coming

up in ten years, compounding has even greater significance. So if he has actual assets of \$100,000, if he converts these into cash, he can have \$200,000 in ten years and realize an interest income for life of \$10,000 to \$15,000 thereafter.

But what about the person starting out, the twenty five year old. By putting \$50 a month in a 5 1/2% passbook savings account each month and leaving the interest to accumulate and compound, he will have \$21,190 by age 45. Then if he transfers the money to a certificate account

(and never adds another penny) the money will grow to \$87,300 by age 65.

On the other hand if one continues to add to his savings account regularly, it will allow the maximum possibility to accumulate \$300,000 or \$400,000 or more.

At Ann Arbor Federal Savings your dollars are not subject to market fluctuations, so you are sure when you reach the age at which you want to start using some of your money or earnings, it will be there.

the magic of compounding

Deposit	in 10 years	in 20 years	in 30 years
\$ 5,000	\$ 10,825.93	\$ 23,440.17	\$ 40,762.36
\$10,000	\$ 21,651.87	\$ 46,880.34	\$ 81,524.72
\$25,000	\$ 54,129.67	\$117,200.85	\$203,761.75
\$50,000	\$108,259.34	\$234,401.70	\$407,523.50
\$75,000	\$162,389.01	\$351,602.55	\$611,285.25

Assumes that the deposit is made at the end of each year, and that the interest is compounded annually. The actual results may vary slightly due to rounding.

ANN ARBOR FEDERAL SAVINGS

11 OFFICES TO SERVE YOU IN: ANN ARBOR, BRIGHTON, CHELSEA, DEXTER, MANCHESTER, SALINE, YPSILANTI

Founded 1890

MEMBER FSLIC

Savings Insured To \$40,000

Wenk-McNamara Engagement Told

Mr. and Mrs. Ernest W. Wenk, 2833 S. Fletcher Rd., have announced the engagement of their daughter, Carolyn Elaine, to Patrick Joseph McNamara, son of Mr. and Mrs. Earl J. McNamara of Trenton. The bride-elect is a graduate of Chelsea High school. She is employed as a teacher by the Ypsilanti School District. Her fiancé also attended Michigan State University and is employed as a principal in the insurance firm of Jack Dempsey Associates, Ann Arbor.

A June 17 wedding is planned.

Please Notify Us In Advance of Any Change in Address

Pump & Pantry Stuck It Out Despite Blizzard

An article in last week's Standard describing food shortages experienced by area groceries in the wake of the blizzard of '78 failed to mention how Pump 'n' Pantry on S. Main St. weathered the storm.

According to owners of the grocery, Pump 'n' Pantry maintained regular hours and a full working staff during the blizzard, and was able to keep its shelves well-stocked with essentials like milk and bread through customer traffic was described as heavy. Pump 'n' Pantry received a milk delivery Saturday, Jan. 28, after I-94 reopened to traffic.



Mr. and Mrs. Guy L. Weatherwax

Guy Weatherwaxes Will Observe Golden Wedding Anniversary

Mr. and Mrs. Guy L. Weatherwax, 11730 Waters Rd., will celebrate their golden wedding anniversary at an open house Sunday, Feb. 12, 2 p.m. to 6 p.m., at Zion Lutheran church, corner of Fletcher and Waters Rds.

They were married Feb. 14, 1928, in Ann Arbor, and have lived in the Chelsea area most of their married life.

Hosting the anniversary celebration will be the couple's four children, Douglas Weatherwax, Mrs. Lorraine Benjamin, and Mrs. Lorenz Wackenhut, all of Chelsea, and Mrs. Donald Elsemann of Manchester.

Mr. and Mrs. Weatherwax also have 15 grandchildren and nine great-grandchildren.

Pet Food Drive Started By Jaycettes

Using a Valentine's theme for the project, members of the Chelsea Jaycee Auxiliary will conduct a "Pet Food Drive" in conjunction with the Huron Valley Humane Society beginning Feb. 12.

Because of a restricted budget and the growing cost of animal food, the humane society is finding it increasingly difficult to keep up with the demand on its food supply. Organizations, clubs and individuals throughout Washtenaw county have been asked to aid the animal shelter with this problem.

Auxiliary project chairman, Sue Zink, has called upon area residents to "have a heart" during Valentine's week and contribute to the pet food drive. Collection boxes will be placed in grocery stores throughout the community. When individuals purchase a food product for their own pet, the Auxiliary has requested they buy an extra food item to be placed in the collection box.

The Huron Valley Humane Society houses a number of different animals from monkeys and hamsters, to cats and dogs, and sometimes even larger animals like horses. Any pet food is appropriate and will be gratefully accepted, however, the largest demand is for dog food, treats and dry milk.

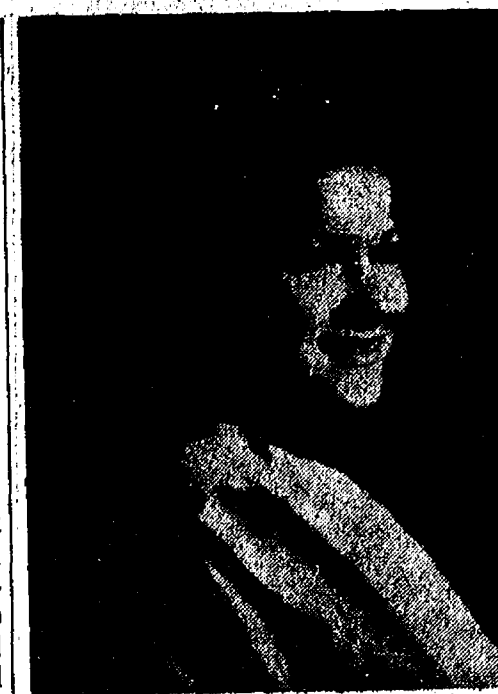
Cash contributions are also welcome and will be accepted by Sandy Meyer, Auxiliary treasurer, at 1805 Old US-12 W., Chelsea. All contributions, cash or otherwise, are tax deductible. For further information, call 475-7912 or 475-2796.

Telephone Your Club News To 475-1371.

TOUGH OF GLASS

A Style for Any Occasion!
1196 M-52
Phone 475-1591

Open Tues. thru Fri. 9 to 4
Saturday 9 to 2
Evening hours by appt. only
Men's & Women's Cuts & Styles
Senior Citizen Discounts every day.



O'CONNER - PURDY: Mrs. Marlene Keezer, of 38 Sycamore Dr., and Norman O'Conner of Gregory have announced the engagement of their daughter, Judith Marie to Dale Allan Purdy, son of Mr. and Mrs. Walter C. Purdy of Whitmore Lake. The bride-elect is a graduate of Pinckney High school and is employed by Thomson-Shore in Dexter. Her fiancé is employed by Ford Motor Co.'s Ypsilanti plant. A June 17 wedding is planned.

Ironwood is as far west as St. Louis, Mo., Port Huron is as far east as Greenville, S. C., or Ashville, N. C., Hancock is farther north than Montreal, Canada.



TROOP 82-

On Monday our troop had the elementary school's art teacher Mrs. Smith, show our troop how to do batik art.

We appreciate Mrs. Smith's coming and helping us. She will be coming again next week.

Linda Wiedmayer, scribe.

Subscribe today to The Standard!

Nowhere else is there a massive citizen effort for the progress of a state comparable to the annual Michigan Week. For information, write the Greater Michigan Foundation, 809 Center Street, Lansing 48906.

CAROL'S CUTS

328 Wilkinson

CAREFREE STYLES

Open Mon., Wed., Fri.

475-7094

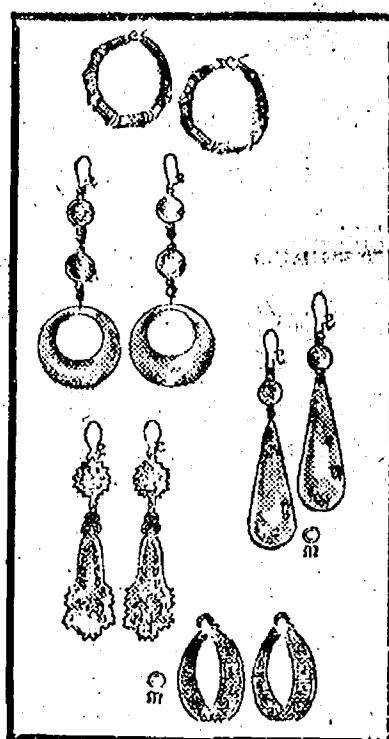
Appts. Only

RICARDO'S HAIR STYLING

107 N. Main, Chelsea

OPEN MONDAY THROUGH SATURDAY
475-1671

EAR PIERCING



Today's fashion conscious women are unhappy with the limited selection, uncomfortable, and easily lost clip earrings. Pierced ears allow you complete freedom of choice among the many elegant new designs and styles in today's ever changing fashion world.

Carefully designed and engineered, the Inverness System employs the safest most sterile method to accomplish quick, painless, carefree insertion of your first fashionable earring.

We will be happy to make this service available free, with your purchase of our reasonably priced, high quality, gold ball or surgical steel earrings.

This service is available to women of all ages but requires a parent or guardian's signature for all persons under the age of 18 years.

WINANS JEWELRY

Hospital Auxiliary Sponsoring Baby Photo Contest

Do you have a snapshot of your child by the Christmas tree? Or maybe playing in the snow? Send them in to the Hospital Auxiliary Baby Photo Contest.

Contest deadlines have been changed because of snow.

Send that favorite photo, no larger than 5x7, with the child's name, age and address to Debbie Spalding, 765 Taylor St.

Entries should be postmarked on or before Feb. 14. Canisters will be placed in area business firms on Feb. 15.

Boys and girls, age 3 years and under, are eligible for entry with the winners, one boy and one girl, to be announced March 5. Each will receive a \$25 savings bond.

Photos will be returned if a stamped, self-addressed envelope is enclosed with the entry.

Let a Standard Want Ad sell your unwanted items!

St. Barnabas Celebrates Their Own Mardi Gras

The families of St. Barnabas church celebrated the last day before the Lenten season with a "Poor Man's Mardi Gras."

The shrove Tuesday repast consisted of a traditional pancake and sausage supper, hosted by Chef Robert Mueller. Helping flip pancakes were Arthur Lindauer, Jerry MacDougall and Rosalie Caine.

After the smoke from the old cast iron griddles greased with bacon rinds had cleared, the group joined in an evening of friendly games.

St. Barnabas Addition

(Continued from page one)

joining, a sacristy, office and lavatory facilities. St. Barnabas members plan to do as much of the work as possible in the completion of the new addition. The name for the addition will be decided by a vote of the entire Mission.

Our 4th Anniversary Sale

FEB. 9
to
FEB. 18

LADIES LONG SKIRTS... 1/3 to 1/2 OFF LADIES STREET-LENGTH SKIRTS

1/3 to 1/2 OFF

SELECTED LADIES DRESSES and JUMPSUITS Including 2-Pc. ENSEMBLES

1/2 OFF

CUSTOM SIZE SPORTSWEAR

SELECTED STYLES

Tops 36-46, Slacks 30-40, XL Sweaters

1/3 to 1/2 OFF

BOYS and GIRLS

SWEATERS, SKI VESTS, WRAPS

1/3 OFF

Girls Winter SLEEPWEAR and ROBES

1/2 OFF

No Tris!

Boys' Pajamas

Sizes 4-18

Up to 1/3 OFF

Selected SPEEDO-PRINTS for Girls

1/3 OFF

WINTER

HEALTH-TEX

Infants - Toddlers
Boys 4-8; Girls 4-6x
QUALITY CLOTHING - A BARGAIN AT ANY PRICE!
Now at Savings of

Up to 1/3 OFF

WINTER JACKETS

INFANTS, CHILDRENS
LADIES

Up to 1/2 OFF

We have a very limited selection of
SNOWMOBILE SUITS
SOME SNOW PANTS

Values to 1/3 OFF

4-BUCKLE ARCTIC BOYS' GALOSHES

1/2 OFF

LADIES SLACKS

Gabardine, Acrylic, Polyester Solids and some Plaid.

1/3 to 1/2 OFF

Ladies Sweaters, Wraps, Pullovers

Small - Medium - Large
NAME BRANDS
Some of Natural Lambswool.

1/3 to 1/2 OFF

LADIES

THREE-PIECE PANT SUITS

Values to \$49.00 - NOW 1/2 OFF

LADIES

SHELLS & BLOUSES

1/3 to 1/2 OFF

Sizes: Small - XL

Ladies Knit Scarves & Hats

1/2 OFF

Close-Out on Two BRA STYLES

1/2 OFF

Beauty-Mist Stockings

Not all sizes available.

59c

LADIES SLEEPWEAR

Warm Robes - Nylon - Tricot Gowns

1/3 OFF

JUNIOR AND MISSY SIZE

LEVI CORDS

SOME MATCHING VESTS

1/3 OFF

CAMPUS

DENIM JEANS

Sizes 8-6. Slim - Reg.

\$7.67

LADIES WARM

SLIPPERS

Good selection of colors.

1/3 OFF

WHITE STAG WARM - UPS

Adult Sizes

1/2 OFF

GIRLS 7-14

SLIM and REGULAR PANTS KNIT SHIRTS and BLOUSES

1/3 OFF

EXCELLENT SELECTION OF

BOYS' KNIT SHIRTS

RUGBYS, TURTLENECKS, CUT AND SEWN, PRINTS AND PLAIDS.

Sizes 4-20

1/3 to 1/2 OFF

AMERICAN EXPRESS
VISA - MASTER CHARGE

VOGEL'S & FOSTER'S

ALL SALES
FINAL

MON.-THURS. - 9 to 5:30
FRIDAY - 9 to 8:30
SATURDAY - 9 to 5:00

+ Services in Our Churches +

FIRST UNITED METHODIST CHURCH
Rev. Marvin M. McCallum, Pastor
Thursday, Feb. 9—
7:30 p.m.—Administrative Board in the large instruction room of the Education Building.
Sunday, Feb. 12—
10:00 a.m.—Worship service (crib nursery for infants to the age of 2 and church school for children ages 2-5).
10:20 a.m.—Church school for children from kindergarten through 4th grade.
Group in the Social Center, Junior high church school, Coffee and punch hour.
11:00 a.m.—Senior high church school.
Tuesday, Feb. 14—
7:30 p.m.—Finance Committee in the Education Building.
Wednesday, Feb. 15—
9:00 a.m.—Sabbath School at the home of Mrs. Jean Storey, Marlene Circle at the home of Mrs. Debbie Spalding.
1:00 p.m.—Ruth Circle in the Crippen Building.
3:30 p.m.—Junior Choir.
4:00 p.m.—Praise Choir.
8:00 p.m.—Chancel Choir.
Thursday, Feb. 16—
9:00 a.m.—Elizabeth Circle at the home of Mrs. Sherri Plank.
7:15 p.m.—Spiritual Growth.
ST. THOMAS EVANGELICAL LUTHERAN
Ellsworth and Haab Rds.
The Rev. Jerome Dykstra, Pastor
Sunday, Feb. 12—
9:30 a.m.—Sunday school, Bible classes, and confirmation classes.
10:45 a.m.—Worship service.
ST. JOHN'S UNITED CHURCH OF CHRIST
Rogers, Corners
Every Sunday—
10:30 a.m.—Worship service.
BETHEL EVANGELICAL AND REFORMED CHURCH
(United Church of Christ)
Freedom Township
The Rev. Roman A. Reineck, Pastor
Every Sunday—
10:00 a.m.—Worship service.
CHURCH OF CHRIST
1361 Old US-12, East
Evangelist John M. Hamilton
Every Sunday—
10:00 a.m.—Church school.
11:00 a.m.—Worship service.
Nursery will be available.
8:00 p.m.—Worship service.
Every Wednesday—
7:30 p.m.—Bible study.
FIRST UNITED PRESBYTERIAN CHURCH
Unadilla
The Rev. T. H. Liang, Pastor
Every Sunday—
9:45 a.m.—Sunday school.
11:00 a.m.—Worship service.
FIRST CHURCH OF CHRIST SCIENTIST
1843 Washtenaw Ave., Ann Arbor
Every Sunday—
10:30 a.m.—Sunday school, morning service.

CONGREGATIONAL CHURCH
(United Church of Christ)
The Rev. Carl Schwarm, Pastor
Sunday, Feb. 12—
10:30 a.m.—Worship and church school.
ZION LUTHERAN CHURCH
Corner of Fletcher, Waters Rds.
The Rev. John R. Morris, Pastor
Thursday, Feb. 9—
7:30 p.m.—Altar Guild.
Saturday, Feb. 11—
9:00 a.m.—8th grade Youth Instruction.
10:30 a.m.—7th grade Youth Instruction.
1:00 p.m.—Senior Citizens.
Sunday, Feb. 12—
9:00 a.m.—Sunday school.
10:15 a.m.—Worship.
Monday, Feb. 13—
8:00 p.m.—Senior Choir.
Tuesday, Feb. 14—
4:00 p.m.—Junior Choir.
7:30 p.m.—Shuffleboard.
Wednesday, Feb. 15—
7:30 p.m.—Lent II Meditations.
IMMANUEL BIBLE CHURCH
145 E. Summit St.
The Rev. LeRoy Johnson, Pastor
Every Sunday—
9:45 a.m.—Sunday school, nursery provided.
11:00 a.m.—Morning worship, nursery provided.
8:00 p.m.—Evening worship.
Every Wednesday—
7:00 p.m.—Family hour, prayer meeting and Bible study.
ST. JACOB EVANGELICAL LUTHERAN CHURCH
12501 Rietmiller Rd., Grass Lake
The Rev. Andrew Bloom, Pastor
Every Sunday—
9:00 a.m.—Worship service.
10:15 a.m.—Divine services.
CHELSEA FREE METHODIST FELLOWSHIP
Meetings at St. Barnabas Episcopal Church
20500 Old US-12
The Rev. William L. Cryderman, Pastor
Call 475-8863 for information.
Every Sunday—
4:00 p.m.—Worship service.
5:00 p.m.—Adult Bible Study and Sunday school for all ages.
Every Wednesday—
3:30 p.m.—Junior Choir at the Pratt residence, 625 N. Main St.
Every Thursday—
7:00 p.m.—Prayer meeting at the church except for the third Thursday of every month. Family Night in homes, call for location.
NORTH LAKE UNITED METHODIST CHURCH
The Rev. John Elliott, Pastor
Every Sunday—
10:00 a.m.—Church school.
10:00 a.m.—Worship service.
ST. JOHN'S EVANGELICAL AND REFORMED CHURCH
(United Church of Christ)
Francisco
The Rev. Virgil King, Pastor
Every Sunday—
9:30 a.m.—Sunday school.
10:30 a.m.—Church services.

OUR SAVIOR LUTHERAN CHURCH
1515 S. Main, Chelsea
The Rev. William H. Keller, Pastor
Sunday, Feb. 12—
9:00 a.m.—Sunday school and Bible classes.
10:30 a.m.—Worship service.
2:30 p.m. to 4:30 p.m.—"Life With God."
Monday, Feb. 13—
Newsletters articles due.
Tuesday, Feb. 14—
9:30 a.m. to 11:30 a.m.—"Life With God."
Wednesday, Feb. 15—
Confirmation classes.
7:30 p.m.—Lenten service.
Thursday, Feb. 16—
7:30 p.m.—Church Council.
ST. PAUL UNITED CHURCH OF CHRIST
The Rev. R. J. Ratzi, Pastor
Saturday, Feb. 11—
9:00 a.m.—Confirmation.
Sunday, Feb. 12—
9:00 a.m.—Church school.
10:30 a.m.—Worship service and church school.
ST. MARY CATHOLIC CHURCH
The Rev. Fr. David Philip Dupuis, Pastor
Mass Schedule:
Every Saturday—
4:00-5:00 p.m.—Confession.
7:00 p.m.—Mass.
Immediately after 7 p.m. Mass, Confession.
Every Sunday—
8:00 a.m., 10:00 a.m., 12:00 noon—Mass.
ST. BARNABAS EPISCOPAL CHURCH
20500 Old US-12
The Rev. Fr. Jerrold F. Beaumont, B.S.P.
Every Sunday—
10:00 a.m.—Holy Communion first, third, and fifth Sundays, and 7:30 p.m. every Wednesday.
10:00 a.m.—Morning prayer.
Second and fourth Sundays, Church school and nursery every Sunday.
Every Wednesday—
8:15 p.m.—Bible study and discussion groups.
First Wednesday of every month—Bishop's Committee.
Third Thursday of every month—Episcopal church women.
SALEM GROVE UNITED METHODIST CHURCH
3320 Notten Rd.
The Rev. Gerald R. Parker, Pastor
Every Sunday—
9:30 a.m.—Sunday school.
10:30 a.m.—Worship service.
FIRST ASSEMBLY OF GOD
The Rev. Richard Coury, Pastor
Every Sunday—
9:45 a.m.—Sunday school.
11:00 a.m.—Worship service.
8:00 p.m.—Evening worship.
Every Wednesday—
7:00 p.m.—Christ's Ambassadors. Missionettes. Bible meditation and prayer.
GREGORY BAPTIST CHURCH
Every Sunday—
9:45 a.m.—Sunday school.
11:00 a.m.—Morning worship.
8:00 p.m.—Young people.
7:00 p.m.—Evening worship.
7:30 p.m.—Thursday mid-week worship service.
BAHAI FIRESIDE
Every Thursday—
8:00 p.m.—At the home of Toby Peterson, 705 S. Main St. Anyone wishing to learn about the Baha'i faith is welcome.
NORTH SHARON BIBLE CHURCH
Sylvan and Washburne Rds.
The Rev. Ronald C. Parkey, Pastor
Every Sunday—
10:00 a.m.—Sunday school (Nursery available). Junior Church classes.
11:00 a.m.—Worship service.
6:00 p.m.—Senior High Youth meeting, Youth Choir.
7:00 p.m.—Evening worship services. (Nursery available.) All services interpreted for the deaf.
Every Wednesday—
7:00 p.m.—Bible study and prayer meeting. (Nursery available.) Day transportation available: 428-7222.
WATERLOO VILLAGE UNITED METHODIST CHURCH
8118 Washington St.
The Rev. Glenn Kjellberg, Pastor
Every Sunday—
10:00 a.m.—Sunday school.
11:15 a.m.—Worship service.
CHURCH OF JESUS CHRIST OF LATTER-DAY SAINTS
Meetings at
Church of Jesus Christ of Latter-Day Saints
2141 Brockman, Ann Arbor
Every Sunday—
9:30 a.m.—Sunday school.

Volleyball Teams Return to Action

Chelsea volleyball squads returned to action in a mixture of victory and defeat last Friday after snow caused a week-long lay-off.

The junior varsity Bulldogs met with Milan for the opening game of the evening and overpowered their opposition in a minimum two games to win their first match in two years.

However, Chelsea's varsity players were less successful against Milan as they fell behind early in the match and were unable to rally for a comeback.

In varsity play, Chelsea was behind, 3-10, in the second game when some strong serving by Diane Ottoman (4 points) and Kathy Starkey (3 points) narrowed the gap to 10-13.

But Milan came through with two more points compared to one more by Chelsea, and won the game, 11-15. Milan topped Chelsea, 15-5, in the first game.

"We have fallen behind early in almost every game which makes it really tough to come back," Chelsea Coach Walt Keppler said. Selected both offensive and defensive player of the match for both the varsity and junior varsity was Chelsea senior Diane Ottoman.

Following Friday's matches, the Chelsea girls volleyball team met with Columbia Central for a Monday evening match, and ended up playing two completely different games.

Failing to get their serves over, the Bulldogs were never in the first game and were maulled, 1-15. In the second game, Chelsea played up to its potential, but fell to a strong, late-game rally by Columbia Central, 13-15.

Five consecutive points and six points by Nancy Knott alone in the second game proved to be the

spark the Bulldogs lacked in their opening contest. But the lead was hard to hold, according to Coach Keppler, and it changed hands six times during the second game. Offensive player of the match honors Monday went to Nancy Knott (7 points), while defensive

honors were awarded to Mary Jo Ziska.

Chelsea will resume action Friday, Feb. 10, at 8 p.m. Next home game will be Monday, Feb. 13, 7:30 p.m., against Michigan Center.

Michigan leads the nation in number of state parks and prepared campsites. Michigan has 79 state parks, four national forests, 33 state forests and more than 150 municipal camping parks. Altogether they have more than 19,000 prepared campsites.

NOTICE OF PUBLIC HEARING to Amend Lyndon Township Zoning Ordinance

Take notice that a public hearing will be held before the Lyndon Township Planning Commission at Lyndon Township, North Territorial and Townhall Roads, on the 16th day of February, 1978, at 8:00 p.m., for the purpose of hearing all interested parties on the petition of the Planning Commission to amend the Zoning Ordinance and Official Zoning Map of Lyndon Township by rezoning the properties hereinafter described;

From Recreation Conservation to Resort Residential:

Beginning at a point which is N. 66° 14' 50" W. 2204.1 ft. from the S. E. Corner of said Sec. 1; thence N. 40° 37' E. 187.4 ft.; thence N. 28° 58' E., 433.9 ft.; thence N. 12° 02' E. 108.5 ft.; thence N. 88° 02' W. 152.8 ft.; thence N. 69° 57' W. 201.0 ft.; thence N. 39° 12' W. 115.0 ft.; thence N. 1° 28' E. 144.0 ft.; thence N. 80° 14' E. 263.7 ft.; thence N. 87° 23' W. 190.3 ft.; thence S. 1° 28' W. 661.9 ft.; thence S. 3° 32' E. 275.5 ft.; thence S. 28° 14' E. 57.9 ft.; thence S. 48° 34' E. 81.5 ft.; thence S. 19° 27' E. 122.7 ft. to the point of beginning.

From Recreation Conservation to Agricultural Residential:

S 80 Ac of N 70 Ac of E 1/2 of NE 1/4 Sec 11 T15 R3E.

From Agricultural Residential to Resort Residential:

Comm at cen of sec. 11 S 3 deg 37' 11" N & S 1/4 line, th N 82-50-00 E 1277.20 ft to POB, th N 83-50-00 E 473.1 ft, th N 3-00-00 W 205.0 ft, th S 83-50-00 W 203.10 ft, th N 3-00-00 W 116.0 ft, th S 83-50-00 W 270.00 ft, th S 83-50-00 E 321.0 ft to POB, being part of SE 1/4 Sec 4 T15 R3E 2.95 Ac.

Comm at center of sec. 11 S 3-00-00 E 639.70 ft th N 83-50-00 E 1750.30 ft th N 3-00-00 W 205.0 ft for POB, th N 3-00-00 W 204.0 ft, th S 83-50-00 W 473.1 ft, th S 3-00-00 E 93.0 ft, th N 82-50-00 E 270.0 ft, th S 3-00-00 E 116.0 ft, th N 83-50-00 E 203.1 ft to POB being part of SE 1/4 Sec 4 T15 R3E 1.65 Ac.

Comm at center of sec. 11 S 3-00-00 E 639.70 ft th N 83-50-00 E 1750.30 ft th N 3-00-00 W 205.0 ft for POB, th N 3-00-00 W 126.0 ft, th W 30 ft, th N 3-00-00 W 60.4 ft, th W 443.1 ft, th S 3-00-00 E 188.64 ft, th N 83-50-00 E 473.1 ft to POB being part of SE 1/4 Sec 4 T15 R3E 2.03 Ac.

Comm at cen of Sec 4, th S 3 E 674.7 ft, th N 83-47-40 E 1749.67 ft, th S 2-59-50 E 25.10 ft to POB, th S 2-59-50 E 626.5 ft, th S 83-55-22 W 475.1 ft th N 2-59-32 W 825.44 ft, th N 83-47-40 E 475.1 ft to POB, part SE 1/4 Sec 4 T15 R3E 6.80 Ac.

From Recreation Conservation to Agricultural Residential:

Begin at N 1/4 post of sec. 11 S 88 deg 23' 25" W 1330.56 ft in N line of sec to W 1/4 line, th S 60 deg 18' 00" W 250.13 ft in W 1/4 line of sec, th N 88 deg 23' 25" E 1338.64 ft, th N 00 deg 32' 00" E 250.17 ft in N & S 1/4 line to pt of beg, being part of E 1/2 of NW 1/4 Sec 23 T15 R3E 7.62 Ac.

Removal of ER, SR, MR classifications from Zoning Map.

Amendment of the Zoning Ordinance by the following changes in text:

ARTICLE II — DEFINITIONS

Section 2.02. Delete LIVESTOCK. Insert: LIVESTOCK: The word livestock shall mean horses, cattle, sheep, goats and swine.

ARTICLE IV — RC — RECREATION CONSERVATION DISTRICT

Section 4.02. Delete item C. Insert: C. A parcel having a lot area of ten acres or more may be used for general and specialized farming and agricultural activities including the raising or growing of crops, livestock, poultry, and other farm animals, products and foodstuffs, and provided that any lot that is kept as idle cropland shall be so treated as to prevent soil erosion by wind or water and so treated as to prevent excessive growth of obnoxious weeds and shrubs, and provided that any lot kept as non-cropland shall be so treated as to prevent soil erosion by wind or water.

Section 4.02. Delete item D. Insert: D. A riding academy or stable, or the raising or keeping of fur-bearing animals, horses, ponies and other animals whether for profit or pleasure.

Section 4.03. Insert: F. Home occupations. G. Rifle ranges and trap shooting.

Section 4.01. Delete item E1. Insert: 1. Front Yard: The minimum setback shall not be less than seventy (70) feet from the right-of-way line.

ARTICLE V — AR — AGRICULTURAL RESIDENTIAL DISTRICT

Section 5.02. Delete item L. Insert: L. A parcel having a lot area of 2.0 to less than 5.0 acres may be used to raise one farm animal as defined in Article II, Livestock, provided that pen and shelter are maintained in a sanitary condition, and that such animal is fenced in or otherwise prevented from roaming at large off the premises, and that adequate housing is provided.

Section 5.02. Insert: M. A parcel having a lot area of 5.0 to less than 10.0 acres may be used for the raising and keeping of livestock, not as a farming activity and not for the purpose of remuneration or sale, but incidental to the principal use of a single-family dwelling there situated providing that no feed other than grain and hay is imported to the premises, and all livestock feed is stored in rodent proof containers, and that pens and shelters are maintained in a sanitary condition, and that such livestock are fenced in or otherwise prevented from roaming at large off the premises, and that adequate housing is provided.

Section 5.03. Delete item B. Insert: B. Public and private park, camping ground, golf course, club, hunting lodge and riding academies, garden nurseries, and greenhouses.

Section 5.03. Insert: L. Home occupations. M. Rifle ranges and trap shooting.

Section 5.04. Delete item E1. Insert: 1. Front Yard: The minimum setback shall not be less than seventy (70) feet from right-of-way line.

ARTICLE VI — RR-1 — RESORT RESIDENTIAL DISTRICT

Section 6.02. Delete item B.

The Chelsea Standard, Thursday, February 9, 1978

Carl's Cleaning Service

521 S. Main St. Chelsea, Mich.
Professional Carpet & Upholstery Cleaning
BUSINESS - RESIDENTIAL
FREE ESTIMATES Phone 475-8007

Section 6.03. Insert: G. Home occupations. H. Livestock on ten acres or more.

ARTICLE VIII — LR — LOW DENSITY RESIDENTIAL DISTRICT

Section 8.03. Insert: J. Livestock on ten acres or more.

Section 8.04. Delete items E1 and E2. Insert: 1. Front Yard: The minimum setback shall not be less than fifty (50) feet. 2. Side Yards: The minimum width of either yards shall not be less than twenty (20) feet; except in the case of a corner lot where the side yard on the road or street side shall not be less than thirty-five (35) feet.

ARTICLE XI — LC — LOCAL COMMERCIAL DISTRICT

Section 11.04. Delete item E1. Insert: 1. Front Yard: The minimum setback shall not be less than seventy (70) feet.

ARTICLE XII — GC — GENERAL COMMERCIAL DISTRICT

Section 12.04. Delete item E1. Insert: 1. Front Yard: The minimum setback shall not be less than seventy (70) feet.

ARTICLE XIII — HC — HIGHWAY COMMERCIAL DISTRICT

Section 13.04. Delete item E1. Insert: 1. Front Yard: The minimum setback shall not be less than seventy (70) feet.

ARTICLE XVI — CONDITIONAL USES

Section 16.11. TEMPORARY OCCUPANCY OF MOBILE HOMES OR BASEMENT HOMES. Delete items A through G. Insert: A mobile home may be temporarily occupied upon the issuance of a conditional use permit and compliance with the following conditions: A. During the period of construction of a new dwelling but not to exceed a period of one (1) year, the owner of such dwelling premises and members of such owner's immediate family shall be permitted to occupy as a temporary residence one mobile home or situated at such construction site provided that such owner intends to occupy as a residence such dwelling upon completion of its construction; or B. Such mobile home shall not be located between the established set back line and the public roadway or curb line of such premises; or C. The mobile home shall contain sleeping accommodations, a flush toilet, and a tub or shower bath adequate to serve the occupants thereof; or D. The sanitary facilities of the mobile home for the disposal of sewage and waste shall be properly connected to the public sewerage system available at such premises, and in case such system is not there available, then properly connected to the existing septic tank sewage disposal system which is approved by the Washtenaw County Health Department for the dwelling to be constructed thereat; or E. No occupant of the mobile home shall cause or permit waste to be discharged upon the ground surface of the premises nor cause or permit refuse to accumulate or remain thereat; or F. The water facilities of the mobile home shall be properly connected to the public water system available at such premises, and in case such system is not there available, then properly connected to the existing well system which is approved by the Washtenaw County Health Department for the dwelling to be constructed thereat. G. A performance bond in the amount of two thousand dollars (\$2,000.00) shall be provided to insure the removal of the mobile home at the termination of the permit.

ARTICLE XX — SIGN REGULATIONS

Section 20.02. Delete item B. Insert: B. One sign announcing a home occupation or professional service not to exceed six (6) square feet in area, such sign shall be no closer to the street right-of-way line than one-half the minimum authorized front yard depth;

Section 20.03. Delete item B. Insert: B. One sign announcing a home occupation, boarding home, tourist home, or professional service not to exceed six (6) square feet in area and it shall be attached flat against the front wall of the building.

ARTICLE XXIII — SUPPLEMENTAL REGULATIONS

Section 23.05. Delete contents. Insert: In any district, every use, building or structure established after the effective date of this amendment shall be upon a lot or parcel which adjoins a public street or a public or private easement of access to a public street. Such a public street shall have a right-of-way at least 60 feet in width, and be established, constructed, and maintained as approved by the Lyndon Township Board under the terms and the provisions of the Lyndon Township Road Ordinance.

ARTICLE XXVI — AMENDMENT PROCEDURE

Section 26.01. Delete contents. Insert: The Township Board may from time to time, on recommendation from the Planning Commission, amend, modify, supplement or revise the district boundaries or the provisions and regulations herein established whenever the public necessity and convenience and the general welfare require such amendment. Said amendment may be initiated by resolution of the Township Board, the Planning Commission, or by petition of one or more owners of property to be affected by the proposed amendment. Except for the Township Board, or the Planning Commission, the petitioner or petitioners requesting an amendment shall at the time of application pay the fee of two hundred (\$200.00) dollars, no part of which shall be returnable to the petitioner.

ARTICLE XXVII — BOARD OF APPEALS

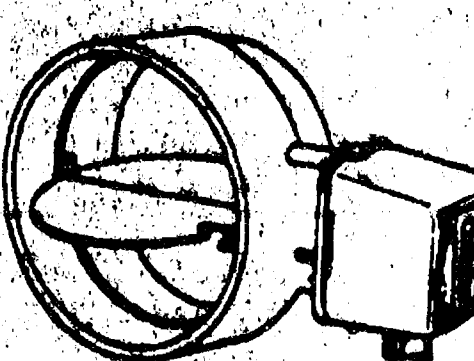
Section 27.02. Delete contents. Insert: MEMBERSHIP, TERMS, AND DUTIES. The Township Board shall appoint the Board of Appeals which shall consist of five members. The first member of the Board of Appeals shall be a member of the Township Planning Commission. The remaining members of the Board of Appeals shall be selected from the electors of the Township. The members selected shall be representative of the population distribution and of the various interests present in the Township. One member may be a member of the Township Board. An employee or contractor of the Township Board may not serve as a member or an employee of the Board of Appeals. The term of each member shall be for three years, except that of the members first appointed, two shall serve for two years and the remaining members for three years. The Board of Appeals shall hear and decide only such matters as the Board of Appeals is specifically authorized to pass on as provided in this Ordinance.

The application, maps and related papers are on file in the Office of the Lyndon Township Clerk, Carla W. Cherry, 11120 Boyce Road, Grass Lake, Michigan 49240, phone 475-2001, and are open for inspection by appointment.

LYNDON TOWNSHIP PLANNING COMMISSION

Carla W. Cherry, Secretary

SAVE 24% ON HEATING BILLS WITH GAS MISER AUTOMATIC FLUE DAMPER



• Retains warm air in your home, not up the chimney
• Blocks cold backdrafts

\$160 Complete

Your chimney is just a hole in the wall letting hot air escape. GAS MISER is an automatic flue damper that prevents warm air from escaping. It is normally closed, but when the thermostat calls for heat, the damper opens before ignition can occur in the combustion chamber. When burner goes off, GAS MISER closes to stop heat loss.

GAS MISER is safe. If gas valve should fail, the automatic damper opens, venting by-products of combustion out the chimney.

GAS MISER is accepted for all natural gas installations by metropolitan Detroit and most reciprocal communities.

CALL TODAY & START SAVING ON HEATING BILLS NOW!

NOW AVAILABLE FOR OIL

ENERGY RECOVERY, Inc.

Licensed Heating & Cooling Contractors
1130 Broad St., Detroit (313) 426-3967



"If we make an error on your taxes, we pay the penalty. And the interest."

H&R Block doesn't make many mistakes. Our people are trained not to. But if we should make an error that costs you additional tax, you pay only the tax. Block pays any penalty and interest. We stand behind our work. That's Reason No. 14 why H&R Block should do your taxes.

H&R BLOCK THE INCOME TAX PEOPLE

105 S. MAIN ST., CHELSEA Ph. 475-2752

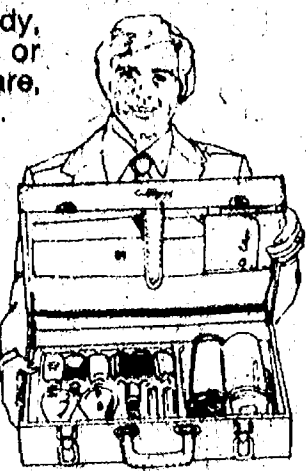
Our offices are open 9 a.m. to 6 p.m.

FREE scientific analysis of problem water.

If the water in your house looks cloudy, stains wash and porcelain, tastes or smells bad, spots dishes or glassware, we'll test it for you free of charge.

We'll tell you exactly what the trouble is and recommend the best, most economical way to get clean, clear, filtered fresh water.

Water conditioning is our full time business. We are local specialists backed by the world's leading maker of water conditioning products.



Just pick up the phone now and say...

"HEY CULLIGAN MAN!"

2321 Jackson Ave., Ann Arbor
662-5665

SHE'S SPECIAL!

LET HER KNOW WITH

Flowers

Valentine's Day Is Feb. 14th

For that "special someone," send the FTD Lovebundle of white daisy mums, pink carnations, purple statice and baby's breath, accented with a spray of red hearts and attached card with "LUV" telling her how to care for the arrangement.

We also have a wide selection of other cut flowers, plants and planters.

ORDER EARLY!

CHELSEA GREENHOUSE

MEMBER FTD - TELEFLORA

7010 LINGANE RD. PH. 475-1353 or 475-9313
Serving the Community Since 1901

SEC ROUND-UP:

Saline Barely Escapes Brighton To Retain League Leadership

(Continued from page one)

again, 42-40. Chelsea began playing catch-up and committed a number of fouls.

Also contributing to Chelsea's problems was Milan's Mark Fierke, who though standing at a mere 6'2", managed to be 6' for 8 from the line in the last two minutes of the game which cemented the win for Milan.

"Over-all, we played very well, probably our best balanced game of the season," Coach Raymond said. "This is evident when comparing Friday's score to the final score in our first game with Milan—they won the game, 77-38."

"We really felt we should have won the rematch," the coach added. "Three calls in a row by the referee were close and could have gone either way."

"But I was pleased with the effort the players put out, they worked hard the entire game, played consistently through the first 3 1/2 quarters, and controlled that portion of the game," Coach Raymond concluded.

Leading scorers for Chelsea were Jesse Colburn with 16 points, Dave Schrotenboer with 11, Randy Harris with 9, and Marc Feeney with 4. Schrotenboer, complimented by his coach for "doing an exceptional job on the boards," collected 19 rebounds.

Chelsea is now 5-3 in the SEC and 7-7 overall on the season. The Bulldogs have six conference games remaining this year with

the first of those scheduled here for tomorrow, Feb. 10, 8 p.m., against league-favorite Saline.

"It will be our biggest game of the year so we're trying to build up school and community enthusiasm to insure a large turnout," Coach Raymond reported, adding, "I think we have a good shot at Saline."

DEXTER 76, SOUTH LYON 51
The Dexter Dreadnaughts defeated South Lyon, 75-51, in a Southeastern Conference game last Friday, with the victory coming hot on the heels of a 71-39 triumph over Lincoln the previous evening.

In Friday's game, the Dreadnaughts took a 19-8 lead in the first quarter and built it into a 42-21 advantage at intermission. Dexter had a big scoring spurt in the last two minutes of the second quarter, sinking nine unanswered points.

SALINE 62, BRIGHTON 60
Down by three points on Brighton's home court last Friday, with only eight minutes of basketball remaining, things looked grim for Saline.

But the Hornets hit the boards aggressively, out-scored Brighton, 24-19, in the fourth quarter, and escaped with a 62-60 decision over Brighton in the SEC match-up.

NOVI 64, LINCOLN 54
Novi's Dave Pisha sank 20 points for his team last Friday

to lead Novi to a 64-54 win over Lincoln.

Down 35-23 at half-time, Lincoln outscored Novi, 31-29, in the last two quarters of the encounter before settling for the Southeastern Conference loss.

Estate Planning Seminars Set By Extension Service

A series of seminars on Estate Planning for Families is being offered by the Co-operative Extension Service three Thursday evenings beginning March 2, from 8 to 10 p.m. at the Ardis Elementary School, 2100 Ellsworth Rd. Like all Extension Programs they are open to all persons regardless of race, color, creed or national origin.

Some of the topics to be discussed by estate planning professionals are the new gift tax and estate laws, wills, probate, trust, life insurance and investment as they relate to estate planning.

"Making an estate plan may be the most important step a family ever takes, regardless of age, stage or value of assets," says Helen Fairman, Extension Home Economist. "Families with no plan may discover too late for them which they might not like, one which is often costly in terms of delay, stress and benefits lost for the loved ones to be provided for."

Topics to be covered in the series include legal aspects of estate planning—ways of owning property, who inherits what and how, Michigan Laws and Decent and Distribution, wills; probate; how death and property taxes affect an estate; the roles of life insurance and trusts in estate planning; and investments as they relate to conservation of income from the estate.

Interested persons may register for the series by mailing \$2 per family unit to: Estate Planning, Co-operative Extension Service, Box 8645, Ann Arbor 48107. Include name, address, phone number and number of persons attending. A program and map will be sent provided the registration is received by Feb. 22. For more information call 973-9510.

Ann Arbor Trust Seeks Permit for Chelsea Branch

Ann Arbor Trust Co. has applied for permission to open a branch office in Chelsea and has re-filed a branch request near Brighton denied by state officials last fall, according to a company spokesman.

Both would be the four-year-old bank's first branch offices. The Brighton branch application was turned down by the state Financial Institutions Bureau, for failure to meet the banking "village" requirement in Brighton township. The proposed location there has been moved.

The Chelsea branch application is for the corner of Old US-12 and Freer Rd., southeast of the village. Currently Chelsea is served by a single office of the \$38 million asset Chelsea State Bank, and a branch office of the Ann Arbor Federal Savings.

Athletic Boosters Start Three-Week Candy Sale Friday

Chelsea Athletic Boosters will begin a three-week candy sale Friday, Feb. 10, to raise funds for various essentials and incidentals supplied to all school athletic teams but not covered by the athletic budget.

By selling \$1.25 boxes of Heath candy and 50-cent "super crunch" candy bars, the Boosters hope to net a profit of \$3,000.

Co-ordinating the upcoming all-sport candy sale, formerly called the Football Candy Sale, are Roger Schrotenboer, Booster Club president, and Phil Bareis, athletic director for Chelsea schools.

CURTIS MATHES COLOR TV

America's most expensive TV sets... but not this week at LOY'S TV.

4-yr. parts warranty
4-yr. picture tube warranty
4-yr. chassis labor.

TOUCH TUNING
REMOTE CONTROL
COMBINATION COLOR TV
Also Black & Whites
WE TAKE TRADES

LOY'S TV

512 N. Maple Rd., Ann Arbor
Phone 769-4469
Welcome. Bank Financing.
Master Charge & BankAmericard

The Chelsea Standard, Thursday, February 9, 1978 5

34 Years Ago...

(Continued from page two)

the Chelsea Kiwanis Club at their Monday meeting. Among the advantages to Chelsea under a city form of government would be elimination of the duplicate set of two assessors, two clerks and two treasurers.

The Rev. Bert Ede, who has served as pastor of the Chelsea Methodist church for the past 20 months, has been transferred to Durand. The Rev. Everett Major has been appointed to succeed the Rev. Ede.

Michigan has more than 11,000 inland lakes and more than 38,000 miles of streams.

Big Mac, arching five miles over the Straits of Mackinac to connect the Upper and Lower Peninsulas, is one of the world's great bridges.

"SATURDAY NIGHT FEVER"

available on
LP, 8-Track, & Cassette.

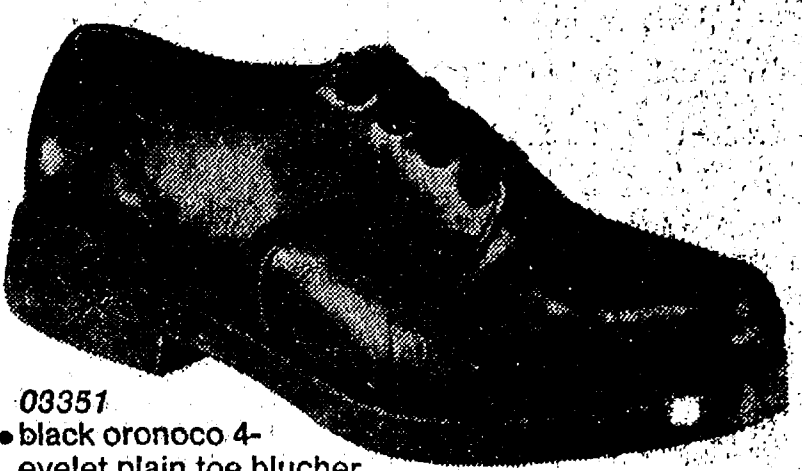
Also, LP's
Reg. \$7.98, Now \$5.55

THE MUSIC HUTCH

10 a.m. to 5:40 p.m.
8107 Main St., Dexter 426-4380

Style that's as
comfortable as it looks;
quality shoes by
Wolverine®

For work or play, you can't beat the
oxford for good looks and durability.
It's the best all 'round shoe you can buy.



- 03351
- black oronoco 4-
- eyel plain toe blucher
- oxford
- full cushioned insole
- approved for uniform or
- service wear
- steel shank
- non-slip, oil proof Durables
- sole and heel

\$25.00

STORE HOURS: Mon. thru Sat., 8 a.m. to 5:30 p.m.

STRIETER'S MEN'S WEAR

Since 1914

FRESH MEATS

U.S.D.A. CHOICE BEEF

Jiffy market

Big Enough To Serve You . . . Small Enough To Know You!

HOURS: 7 DAYS A WEEK
7 a.m. to 10 p.m.

WE ACCEPT U.S.D.A. FOOD STAMPS | SALE PRICES EFFECTIVE
Thurs., Feb. 9 thru Sun., Feb. 12

COMPLETE SUPERMARKET

FRESH MEATS U.S.D.A. CHOICE BEEF
COLD BEER WINE LIQUOR

CHUCK ROAST 79¢ lb.



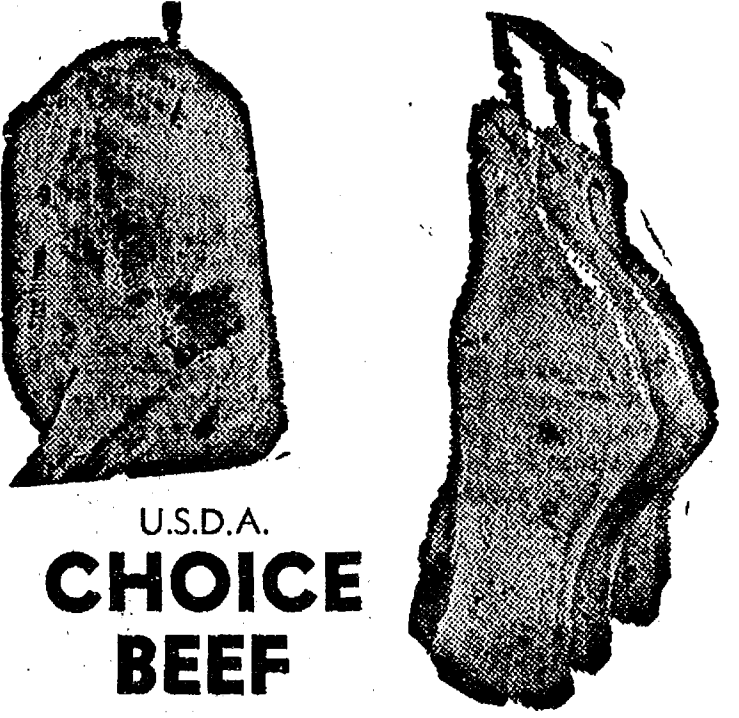
U.S.D.A. CHOICE BEEF
CENTER CUT CHUCK ROAST Lb. 89¢

U.S.D.A. CHOICE BEEF
ENGLISH CUT ROAST . . . Chuck Cut Lb. \$1.19

U.S.D.A. CHOICE
ARM ROAST Lb. \$1.19

U.S.D.A. CHOICE BEEF LEAN
SHORT RIBS OF BEEF Lb. 59¢

JIFFY MARKET MEAT SERVICE



U.S.D.A.
CHOICE
BEEF

SIDES - FRONTS - HINDS
WHOLE RIBS - WHOLE LOINS

CUSTOM CUTTING - WRAPPING - FREEZING
QUICK SERVICE ON BUTCHERING
YOUR BEEF OR OURS

YOUNG, TENDER, LEAN PORK

PORK STEAK.. Cut from Lean Butts \$1.29 lb.

FRESH **PORK ROAST .** Boston Butt Lb. \$1.19

FRESH **PORK CUTLETS ..** Lb. \$1.29

FRESH **PORK SAUSAGE** Lb. \$1.19

FRESH **SPARE RIBS** Lb. \$1.19

FARMER PEET'S SLICED BACON 1-Lb. Pkg. \$1.29	Young, Tender, Sliced BEEF LIVER 49¢ lb.	FARMER PEET'S CHUNK BOLOGNA 99¢ lb.	FARMER PEET'S ALL-BEEF FRANKS 1-Lb. Pkg. 89¢	ARMOUR LARD 2 lbs. 77¢ Reg. 97¢	ECKRICH Smorgas-Pac 1-Lb. Pkg. \$1.29	SPECIAL - WHOLE PORK LOINS AVERAGE WEIGHT - 15 LBS. JUST CUT \$1.25 lb. OR Sliced, Freezer Wrapped, Quick Frozen \$1.35 lb.
---	---	--	---	---	--	--

Wonder
Country Style
WHITE BREAD
1 1/4-Lb. Loaf 39¢

FARM MAID
Homogenized
FRESH MILK
Gal. Crtn. or Plastic \$1.39

FARM MAID
CHOCOLATE MILK
39¢ qt.
HALF & HALF
39¢ pt.

FARM MAID
LOW-FAT
MILK
\$1.09 gal.

FARM MAID
FRESH
ORANGE JUICE
1/2 gal. 79¢

HOLSUM
DARK BREADS
WHEAT - RYE
CRACKED WHEAT
1-Lb. Loaf 49¢

AS PUMPS & STORE OPEN 7 a.m. to 10 p.m. 7 Days a Week — U. S. Authorized Food Stamp Store — Daily & Sunday Papers

Community Calendar

Week of Feb. 9-16
1978

Woman's Club of Chelsea, annual Valentine Tea at the Chelsea Methodist Retirement Home Feb. 14. Members are asked to be there by 1:30 p.m.

Modern Mothers Child Study Club at home of Lenore Mattoff Tuesday, Feb. 14, 8 p.m., for a Greek cooking demonstration and business meeting.

Kinder Klub tour of Hickory Farms, Tuesday, Feb. 14. Meet at the home of Veretta Whitaker at 7 p.m.

Ann Arbor Area Ostomy Association panel discussion with the family and friends of Ostomates, Thursday, Feb. 16, 7:30 p.m., at the Senior Citizens' Guild, 502 W. Huron, Ann Arbor.

Washtenaw County Medical Care Auxiliary, Wednesday, Feb. 15, 9:30 a.m., at Zion Lutheran church, 1501 W. Liberty St., Ann Arbor. February is membership month. Be sure to come.

Chelsea Band and Orchestra Boosters, Thursday, Feb. 9, 8 p.m., in the Chelsea High school band room.

Western Washtenaw Girl Scout Association, Thursday, Feb. 9, at St. Andrew's United Church of Christ, 7610 Ann Arbor St., Dexter, 7:30 p.m. All adult Girl Scouts and girls over 14 are invited. Bring craft and written instructions. There will also be a talk about money by staff members of Huron Valley Girl Scout Council. Presented by Cadette Troop 156 of Dexter, Mrs. Sandy Armstrong, leader. Note change of date.

Chelsea Co-op Nursery is now taking applications for the 1977-78 school year. To enroll, call Kay Johanson, 475-7765 or 475-8316.

Lyndon Township Board regular meetings the third Tuesday of each month, 7 p.m., in Lyndon Town Hall.

Dexter Co-op Nursery's annual plant sale, Saturday, Feb. 11, 9 a.m.-4 p.m., at St. Andrew's United Church of Christ, 7610 Ann Arbor Rd. Most plants around \$1.

Sylvan Township Board meeting the first Tuesday of the month, at 7 p.m., at Sylvan Township Hall.

OES card party, Saturday, Feb. 18, 8 p.m. at the Masonic Temple. Public invited.

Chelsea Christian Men's Fellowship (non-denominational) prayer breakfast, the first Saturday of every month, 8 a.m., in the Chelsea Community Hospital dining room.

Chelsea Community Farm Bureau, Thursday, Feb. 19, at the home of Mr. and Mrs. Carl Heller. Pot-luck supper at 7:15 p.m.

Chelsea Child Study Club Tuesday, Feb. 14, 8 p.m., at the home of Wyn Schumann. Wine Tasting Party and Sweetheart Night.

Rogers Corners Farm Bureau, Friday, Feb. 10, 8:30 p.m. at the home of Mr. and Mrs. John Niehaus.

Lima Township Board regular meeting the first Monday of the month, 8 p.m., at Lima Township Hall.

AA and Al-Anon meeting, Monday evenings at Chelsea Community Hospital, 8:30 p.m. Closed meetings.

Chelsea Senior Citizens meet the third Friday of each month, 6 p.m., at St. Mary's school. Pot-luck, games and cards.

Lyndon Township Planning Commission meets the second Thursday of the month at the Township Hall, 8 p.m.

Lima Township Planning Commission regular meeting the third Tuesday of every month, 8 p.m., at the Township Hall.

Chelsea Rebekah Lodge No. 130, the first and third Tuesday of every month, 7:30 p.m., at the Temple.

Lions Club, first and third Tuesday of every month, 6:45 p.m. at Chelsea Community Hospital.

Lamaze childbirth preparation classes. For more information, call 475-9558 or 475-9136.

American Legion hospital equipment is available by contacting Larry Gaken at 475-7891.

Sharon Township Planning Commission regular meeting third Wednesday of each month. adv42tf

OES Past Matrons, pot-luck, Thursday, Feb. 16, 12:30 p.m. at the Masonic Temple.

Sharon Township Board regular meeting first Thursday of each month, 8:30 p.m.

Cribbage Tourney Standings

After First Night of Play				
	W	L	Pts.	
Ginny Wheaton	3	6	630	
Judy Granger	6	3	318	
Tessie Monroe	5	4	431	
David Boyer	3	7	775	
Darlene Barry	3	7	708	
Jo Anderson	7	3	335	
Jon Burns	5	4	405	
Rod Houle	5	4	419	
Greg Bush	5	5	476	
Bob Gaiser	7	3	309	
Sally Schluppe	3	7	790	
Skip Schluppe	6	4	435	
Art Jarve	8	2	189	
Sue Walton	4	6	623	
Richard Glasson	5	5	549	
Fred Brede	5	5	569	
Mike Kelly	3	7	807	
Tom Penhallegon	3	7	740	
Dan Shirilla	6	4	396	
Jeff Boyer	5	4	380	

Play-off will be among top eight players on the fourth night of the tournament, Feb. 27.

Michigan was the first state to establish roadside picnic tables.

Dial-A-Ride May Come To Chelsea

(Continued from page one)

sequently, AATA is asking for \$10,000 in local government contributions.

Both Manchester and Manchester township have voted to fund the program, but holdouts include Chelsea, Sylvan township and Lima township. Officials in the latter three areas have stated the low level of ridership in their areas, as demonstrated by statistics from experimental Dial-A-Ride service last year, does not warrant the \$1,000 each has been asked to contribute by AATA.

"If Chelsea and some of the surrounding township areas refuse to pay, we're not sure how their share will ultimately be funded," Karl Guenther of AATA said. "But our intention is to go ahead with some form of service in the area anyway."

Guenther added AATA would be sending representatives to town meetings during the coming months in an attempt to convince those local governments still reluctant to fund Dial-A-Ride to reconsider their positions.

"The village of Chelsea is the most critical," he said. "If Chelsea goes along, we believe the townships will too." Guenther predicted Chelsea would vote to fund the program once local officials realized the benefits of Dial-A-Ride service.

State approval of Dial-A-Ride operation in Chelsea, Manchester, and Western Washtenaw county followed the presentation of a memorandum from AATA to the State Highway Commission explaining and justifying the proposal.

The memorandum pointed out that an estimated 890 persons in the western part of the county are 65 years of age or older, while some 460 have a physical or mental handicap.

It also noted major trip generators would include Chelsea Medical Center, and Chelsea and Manchester for medical care, shopping and social activities.

In the memorandum, AATA further stated that under no circumstances would the western Washtenaw Dial-A-Ride service either duplicate or eliminate the Chelsea Area Transportation Service (CATS) which will continue handling travel within the village of Chelsea, while AATA handles trips between Chelsea and other parts of the county.

Confident that Dial-A-Ride will ultimately be welcomed by the western out-county area, AATA has gone ahead and ordered three new vans to serve the area, and is currently hiring and training staff to operate the vehicles.

The AATA memorandum concluded AATA "has historically been aggressive about seeking local funds" and would continue in that tradition to keep the new service going after the first year.

BIRTHS

A daughter, Jessica Marie, Tuesday, Jan. 31, at Foote Hospital, Jackson, to Mr. and Mrs. Jeffrey Williams, of Jackson. Maternal grandparents are Duane Boyer, Chelsea, and Mr. and Mrs. Max Brooks of Manchester. Paternal grandparents are Mr. and Mrs. Williams of Cody, Wyo., and Mr. and Mrs. Lytle of Milan.

A daughter, Tiffany Marie, Tuesday, Jan. 24, at St. Joseph Mercy Hospital, Ann Arbor, to Mr. and Mrs. William Scott of Chelsea. Maternal grandparents are Mr. and Mrs. Bob Fitzsimmons of North Lake. Paternal grandparents are Mr. and Mrs. William Bauer of Chelsea.

A daughter, Beth Amber, to Mr. and Mrs. Steve Shepherd, of Jackson, Feb. 4, at St. Joseph Mercy Hospital, Ann Arbor. Maternal grandparents are Mr. and Mrs. Dick Weston of Grass Lake, and paternal grandparents are Mr. and Mrs. Oliver Shepherd, also of Grass Lake.

Three Qualify For Regional

Chelsea's Mike Young, Brian Van Reesema and Leon Brown all qualified for this Saturday's regional tournament at Willow Run after coming through with outstanding wrestling performances in last Saturday's district meet at Dearborn Heights.

Both Young and Brown won their weight divisions while Van Reesema placed fourth.

Michigan includes 57,022 square miles of land area, 1,194 square miles of inland waters, 38,575 square miles of Great Lakes water area and 3,126 miles of Great Lakes shoreline.

FARLEY CONSTRUCTION
322 HOWARD RD.

ADDITIONS • REMODELING
REPAIRS
NEW HOMES

475-8265 or 475-7643

The most FAMOUS HOME ENTERTAINMENT SALE of all!

23rd MAGNAVOX Annual Sale

SAVE UP TO \$225

Model 4546

SAVE \$140

STAR SYSTEM™ TOUCH-TUNE™ COLOR TABLE MODEL TV

Model 4471 brings you computer sharp, computer fast 19" diagonal color pictures on any channel... at the touch of your finger. Touch-Tune at the set... or by remote control (included).

Now \$639⁹⁵

Model 4666 — Mediterranean styling

SAVE \$110

25" diagonal Console — offers the convenience and automation of the Videomatic one-button tuning system, brilliant color on its Super Bright Matrix Picture Tube and 100% solid-state reliability. Fine furniture styling, too.

Now \$639⁹⁵

Model 4666 — Mediterranean styling

SAVE \$170

VIDEOMATIC™ TOUCH-TUNE™ FINE FURNITURE COLOR TV

This outstanding Magnavox brings you a beautiful 25" diagonal color picture at the touch of your finger... electronically. No moving parts to wear out. And you may add the convenience of remote control at time of purchase... or later.

Now \$759⁹⁵

Model 4466 — Mediterranean styling

SAVE \$80

19" diagonal Videomatic Table Model — automatically brings you eye-pleasing pictures in any light... plus brilliant, sharp color on its Precision In-Line Tube. It also has the reliability of a 100% solid-state chassis.

Now \$459⁹⁵

Model 6854 — with studio access to controls. Large storage area.

SAVE \$100

Deluxe Decorator Stereo. Enjoy Dimensional Sound from Stereo FM/AM radio, records or optional tape equipment. Six speakers in a special 3-way speaker system project sound from both sides and front of the finely crafted cabinet.

Now \$599⁹⁵

Model 6560 — with studio access to controls. Large storage area.

SAVE \$70

The Venetian Decorator Stereo. A combination of exquisite furniture design and audio engineering expertise. Model 6560 will delight your eyes... and ears — with the rich, full sound of Stereo FM/AM radio, records or optional tape equipment projected by four speakers.

Now \$429⁹⁵

Personal Portable TV — model 5300

SAVE \$20

Great Sound... Small Price. Magnavox modular music system, model 1709, offers you a full-featured stereo FM/AM radio, built-in 8-track player, automatic record changer (with dust cover) and two sealed-back enclosures — each with a fine sounding 6" speaker.

Now \$189⁹⁵

SAVE \$10

Value Priced Modular Music System, Model 1709 will delight you with its performance in a variety of settings. • Stereo FM/AM tuner, amplifier • built-in 8-track player • record • automatic • changer (with dust cover) • plus 2-way tuned-vent speakers for rich, full tone.

Now \$99⁹⁵

SAVE \$40

Now \$259⁹⁵

HEYDLAUFF'S 113 North Main Ph. 475-1221

GO GAMIBLES

110 N. MAIN ST. PH. 475-7472

for RCA COLOR TV

RCA XL-100
100% Solid State
Color TV
25" diagonal

RCA GB688

RCA XL-100 Xtented Life Chassis

Designed for high performance and longer life.

NOW ONLY \$569⁰⁰

SHOP NOW & SAVE!



Real Estate

By PAUL FRISINGER

REALTOR

WATCH THOSE STATISTICS

You see the headlines in the newspaper quite often . . . "Home prices up 6%." The situation looks discouraging for potential home buyers. But before you shake your head and say you can't afford those prices, dig a little deeper and see what's behind those statistics.

The prices that are quoted in the papers are usually MEDIAN prices. The median price is the middle price. Remember this when you read the real estate news. If the headline says "Median Price of Homes in West Northville Reaches \$32,500" it simply means that half the homes sold went for more than that figure, and half went for less. Bear in mind that the median price figure only gives a rough idea of home prices. The only real way to know what's available and at what price is to find out. Remember that statistics view the whole picture, surveying a group of homes and arriving at a median figure. YOU are only interested in one home! There might be one out there just for you at the price you want to pay. Come in and talk to us about it. You might be able to laugh at those statistics as you move into your own home!

If there is anything we can do to help you in the field of real estate, please phone or drop in at FRISINGER REALTY CO., 935 S. Main St., Chelsea. Phone: 475-868; evenings 475-2621. We're here to help!

Jaycees Seek Nominees for Service Award

Chelsea Jaycees have once again launched a search for an outstanding civic leader to be honored Thursday, March 16, 7 p.m. at their annual Distinguished Service Award Banquet in the Fairgrounds Service Center.

Guest speaker for the event will be announced at a later date.

Purpose of the banquet is twofold. First, it is conducted annually to give public recognition to a local resident who has actively served the community during the past year; and second, the banquet provides all local service organizations with an opportunity to honor their own outstanding members.

This year's Distinguished Service Award recipient will be selected by a committee comprised of Chelsea Jaycees, last year's award winner, Sam Johnson, and a representative from the Village of Chelsea.

Heading up the annual project for the Jaycees are Bob Meyer, Morgan Rowe and Norm Colby.

JV Cagers Rally for Big Win Over Milan

Chelsea's junior varsity cagers offset a cold start on the boards with a burning defense last Friday to sweep to a 57-48 win over Milan and take over the number one spot in the Southeastern Conference.

Chelsea now leads the league with a 7-1 record and an 11-3 record overall. Close behind, however, are Saline and Milan, each with only two conference losses.

In Friday's game, Milan sprang to an 8-4 lead in the first quarter before Chelsea came back to narrow the gap to 12-13 behind Milan at the end of the period. Maintaining their momentum in the second quarter, the Bulldogs outscored their opposition 15-8 for a 27-21 lead in the contest.

"That second quarter was the key to our win," Chelsea Coach Jon Schaffner reported. Because Milan trailed the Bulldogs by only one point in the third period and two points in the fourth, it was Chelsea's six-point half-time lead that gave the team its deciding edge.

"Our other strong point in the match was our defense which held a fine Milan team to only 48

points," Coach Schaffner added. "Milan outshot us percentage-wise from both the field and the foul line, but our defense, coupled with superior rebounding and turnover figures, more than made up for the difference."

Chelsea outrebounded Milan 39-27. "Milan seems to bring out the best in Chelsea as we have played our two best games of the year against them and handed them their only two losses in the conference," Coach Schaffner noted.

Contributing to Friday's win were Mike Killelea with 16 points, 18 rebounds, and 4 assists; Jeff Dils with 15 points, 3 rebounds, 3 steals and 3 assists; John Dunn with 14 points, 2 rebounds, 3 steals, 3 assists and 1 blocked shot; Don Schrotenboer with 6 points, 7 rebounds, 2 steals, 2 assists and 1 blocked shot; Brad Knickerbocker with 6 points, 6 rebounds, 2 steals and 5 assists; and Mike Woods with 3 rebounds.

The junior Bulldogs' next game will be Friday, Feb. 10, 6:30 p.m. when they host Saline, the only team able to hand Chelsea a loss this season.

Frosh Cagers Have 3-6 Season Record

"Heart-stopping" were the words used by Coach Jim Winter to describe the kind of action which has dominated most of the games played by Chelsea's freshman basketball squad this season.

Now 3-6 on the season, the 9th grade cagers have had five of their nine games decided by seven or less points.

The freshmen recorded wins over Brighton and Gabriel Richard at the beginning of the season, coming up with a 13-point and 24-point spread in each game, respectively.

The other Bulldog triumph was over Dexter. Chelsea edged the Dreadnaughts by one point when Jon Riemenschneider netted two free throws after he had been fouled at the final buzzer.

According to Coach Winter, four Bulldog losses this season could easily have gone into the win column. Two of the losses were at the hands of South Lyon, the first by two points and the second by four, while a third loss to Lincoln came when the freshmen again

found themselves two points behind their opposition.

Milan picked up a win in Chelsea's fourth hotly-contested match by outscoring the Bulldogs by seven points.

Chelsea's other losses were to Novi and Saline.

"Lack of concentration and intensity, especially in the third quarter, seems to be at the heart of the losses," Coach Winter explained. "We have been outscored by as many as 19 points in that critical period." Capitalizing on Bulldog offensive and defensive lapses in the third quarter, Chelsea's opposition owns a 40 percent shooting mark for the period.

Offensive leaders among Chelsea's freshmen cagers are Mike Wade with 113 points, Jon Riemenschneider with 112, and Carl Simpson with 106. Riemenschneider also leads the team with 34 offensive rebounds.

Only five games remain on the 1977-78 freshman basketball schedule. The Bulldogs will host Novi on Feb. 9 at 7:30 p.m., will travel to Saline on Feb. 16, and will be at home Feb. 22 for a rematch with Dexter. No date has yet been set for the Lincoln game.

JV Cagers Roll Over Dexter, 74-56

Hot shooting and an equally impressive rebounding performance resulted in a winning combination for Chelsea's junior varsity cagers Tuesday evening as they trampled arch-rival Dexter, 74-56, to strengthen their foothold at the top of the Southeastern Conference.

Chelsea now leads the conference with an 8-1 record and is 12-3 overall.

"It was a good shooting and rebounding night for us as we shot 31 of 67 for 46 percent from the field, and outrebounded Dexter, 44-25," Chelsea Coach Jon Schaffner confirmed.

In the first quarter, Chelsea experimented with a new defense, but Dexter looked good and outscored the Bulldogs, 14-13. In the follow-up period, Chelsea returned to its regular game, but still could not get going though the Bulldogs led Dexter, 31-30, at intermission.

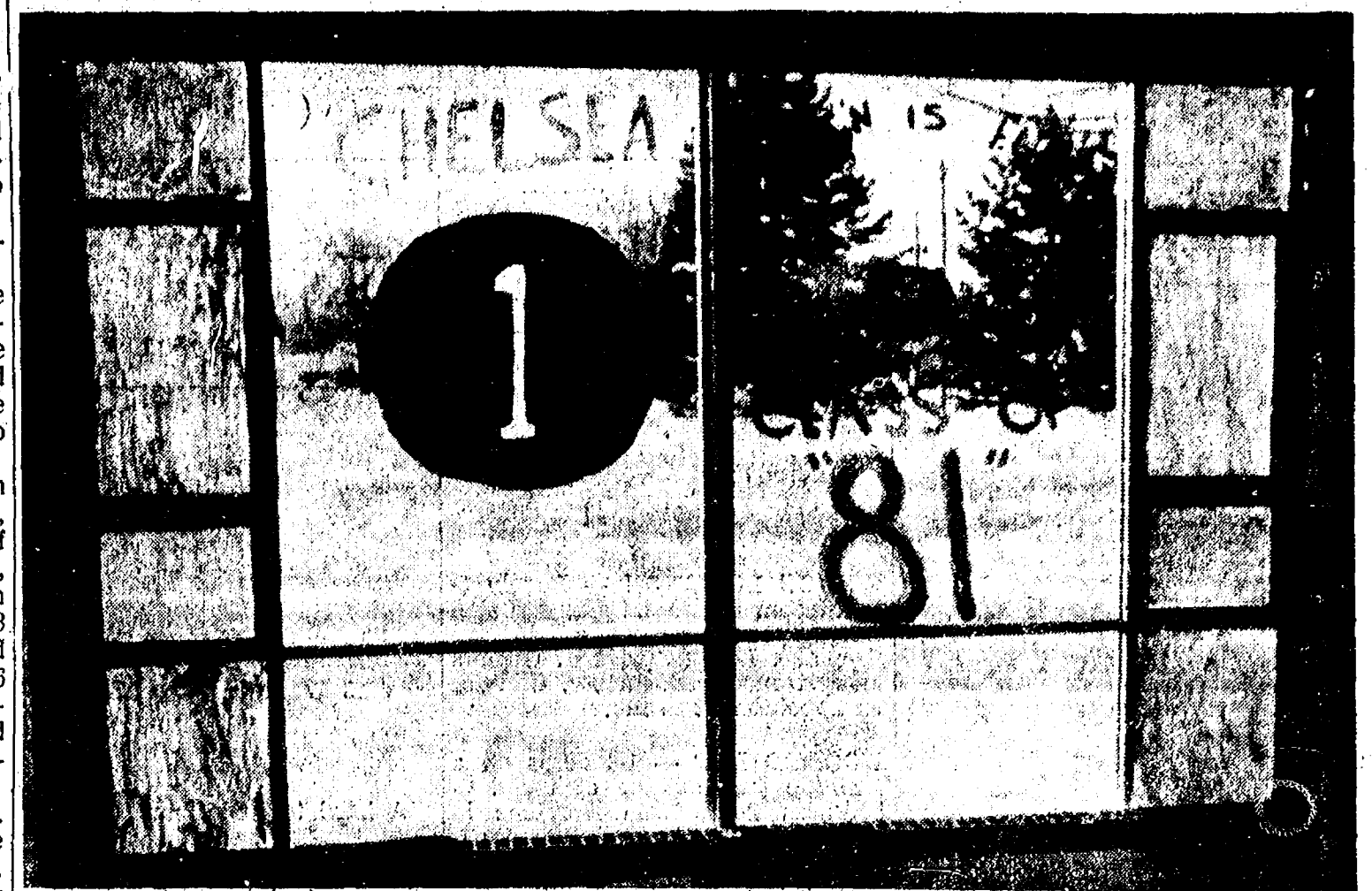
Then in the third quarter, Chelsea exploded with 26 points to Dexter's 12 to put the game away as scoring remained fairly even between the two teams in the final period.

In double figures for the Bulldogs were Don Schrotenboer with 18 points, 13 rebounds and 3 blocked shots; Jeff Dils with 12 points, 3 rebounds, 4 steals and 6 assists; Mike Killelea with 12 points, 11 rebounds, 1 steal, 3 assists and 1 blocked shot; and Brad Knickerbocker with 10 points, 3 rebounds, 2 steals and 3 assists.

Also contributing to the winning cause were Mike Wood with 4 points, 2 rebounds and 2 assists; Dave Seyfried with 2 points, 3 rebounds, 2 assists and 1 blocked shot. (Continued on page 10)

Residential - Commercial
REMODELING
FREE ESTIMATES
1b V. JENSEN and SON
LICENSED BUILDER
378 Spring Lake Drive
Chelsea, Mich.
PHONE 475-1820

CHELSEA, MICHIGAN, THURSDAY, FEBRUARY 9, 1978



WINTER CARNIVAL: In preparation for "Freshman Day," or the second day of this week's first annual Winter Carnival at Chelsea High school, members of the Class of '81 chose to paint spirited slogans on the windows of the high school cafeteria for their cafeteria decorating project. Here, a huge "No. 1" basketball symbolically predicts a Chelsea win over league-leading Saline this Friday in a game which will climax the week-long carnival celebration.



CHELSEA HIGH FRESHMEN put hearts around the names of various Bulldog cagers and then spelled out their message in large letters while painting cafeteria windows Monday during a cafeteria decorating contest scheduled as a part of the school's first annual Winter Carnival this week. Organized to parallel Homecoming Week, the carnival was designed to promote school spirit and urge Chelsea cagers on to victory against Saline this Friday. Each class at Chelsea High was assigned a cafeteria decorating day this week with the winner of the contest to be named Friday.

Methodist Church Plans Lenten Series

Six weekly adult study-fellowship classes will highlight the Chelsea United Methodist Lenten observance, beginning Feb. 16, 7:15 p.m. to 9:15 p.m., in the educational unit at First United Methodist church on Park St. The class schedule is as follows:

Feb. 16 - "What is Prayer? Should I Pray Constantly?" led by the Rev. James Stacey.
Feb. 23 - "Death, Life Does Not End in Death" led by David Sweet.
March 2 - "Decisions, Decisions - Christian Related" led by Tom Schomaker, director of Wesley Foundation at the University of Michigan.
March 9 - "The Bible, Skills for Understanding" led by James Lorenz.
March 16 - "Church Today"

Can It Fulfill Its Mission?" led by Mrs. Jane Schairer.
March 23 - "Interpretation of Faith" led by the Rev. Marvin McCallum.

HALF AND HALF
Half and half is a mixture of milk and cream which contains not less than 10.5 and not more than 18 percent milkfat, almost always homogenized.

SCHUMM'S VALENTINE SPECIAL

SHRIMP 'n STEAK DINNER Plus Wine

Your dinner will include: basket of warm garlic toast, choice of soup or juice; Combination of:

Schumm's own Fresh Battered Shrimp and Choice Top Butt Steak
Baked Potato
Glass of Wine

ALL FOR \$6.95

OPEN 11 a.m. to 11 p.m. Monday thru Thursday
11 a.m. to Midnight Friday and Saturday
12 Noon to 9 p.m. Sunday

SCHUMM'S

1620 M-52

PHONE 475-2020

RICK'S MARKET

20490 M-52

"The Store with the Spartan on the Door"

Phone 475-2898

BANQUET BUFFET DINNERS

Turkey, Stew, Beef Noodle, Chicken Dumpling, Chop Suey, Salisbury Steak

\$1.19

SPARTAN BREAKFAST TREAT

1/2 gal. **69¢**

COLE'S GARLIC BUTTERED BREAD

1-Lb. Loaf **69¢**

STEHOWER'S SIZZLE STEAKS

1-Lb., 2-Oz. **\$1.49**

HOME-MADE PIZZA

from

RICK'S OVENS

Beginning Thursday, Feb. 16

You'll Love 'em!

ECKRICH SMOKY-LINKS

10-Oz. Pkg. **93¢**

CARNATION HOT COCOA MIX

20-Oz. Jar **\$1.95**

BANQUET FRIED CHICKEN

2-Lb. **\$2.09**

SALUTO DEEP DISH PIZZA

Sausage or Pepperoni

\$2.29

RICK'S HOT BREAD DAILY

Weekdays by 3:30 p.m. Sat. & Sun., by 10:30 a.m.

(QUANTITY RIGHTS RESERVED)

Ads
Taken
Till 1 p.m.
Tuesday

PUT IT IN THE CHASE FOR RESULTS

Just
Phone
475-1371

WANT ADS

The Chelsea Standard WANT AD RATES

PAID IN ADVANCE—All regular ad-
vertisements, 25 cents for 25 words
or less, each insertion. Cash, each
insertion. 25¢ for more than 25
words and 3¢ extra per word for each
insertion. "Double" or "lock" num-
ber ads, 50¢ extra per insertion.

CHANGE RATES—Same as cash to
advance, with 25¢ extra for each
change. 25¢ for each change. 25¢ for
each change. 25¢ for each change.

DISPLAY WANT ADS—Rate, \$1.40 per
column inch, single column, with
only 2-point and 14-point type
only. No borders or boldface type.
Minimum 1 inch.

CARDS OF THANKS or MEMORIALS—
Single paragraph style, \$1.50 per
insertion for 50 words or less, 5¢
per word beyond 50 words.

COPY DEADLINE—1 p.m. Tuesday
week of publication.

ERRORS—Advertisers should check
their ads the first publication. This
newspaper will not be liable for errors
in publication except to the extent
of the cost of the ad for the first
week's insertion. Adjustment for
errors is limited to the cost of portion
of the ad wherein the error occurred.

NEEDED—Someone to board my 2
dogs until my new home is built.
Prefer someone on farm. Terms
negotiable. Ph. 421-6783, evening,
or 353-5000 days. x32tf

C—Custom Built Homes
O—h! We Remodel too

U—can count on us
N—o Job Too Small

T—him Inside & Out
R—ough-In Only If

Y—ou Want to Finish
S—iding Aluminum, 5' Gutters

I—mmediate Attention
D—ALE COOK & CO.

E—stimates, Free

BUILDERS
Please Call
475-9153

DALE COOK
17tf

Fireplace Builder
Field stone mason, block and brick
mason, tuck pointing.
FREE ESTIMATES
Call 475-8025 after 3 p.m.

Patrick Grammatico
x40tf

BODY SHOP
COMPLETE FULL TIME
Estimates Available

PALMER FORD
222 S. Main 475-1301
40tf

Headquarters for
RED WING
WORK SHOES

Foster's Men's Wear
40tf

WANT ADS

FOR SALE — Brown Eggs, 12073
Island Lake Rd., Dexter. Ph.
426-2782. x39

Pierson &
Riemenschneider
475-9101

CHOICE LOCATION — Lovely 3-
bedroom home on Clear Lake.
Large open staircase and fireplace.
Lots of privacy. Owners
being transferred. \$75,000. Call for
an appointment to see.

WOODED LOT — 1.6 acres on a
hilltop just outside of town. 3-
bedroom home with fireplace in
family room. 2½-car attached ga-
rage. Owners being transferred.
\$71,500. Call for an appointment to
discuss its many fine features.

CROSS-COUNTRY SKIING at its
best on this 100-acre farm located
near state land. 10.8 acres, a pond,
outbuildings equipped for animals
and a beautiful large 4-bedroom
home. Owners being transferred.
\$82,500. Call for an appointment to
discuss whether it meets your re-
quirements.

PRICED RIGHT — Large 4-bed-
room home in Stockbridge. 2½
acres on a quiet street. Owners
have moved to a new location.
\$83,000. Call to learn of its many
extras.

Pierson &
Riemenschneider
REALTORS
111 Park St. - 475-9101

EVES:
Jeanene Riemenschneider 475-1489
Pat Merkel 475-1824
John Pierson 475-2064
34tf

R. L. BAUER
Builders
LICENSED and INSURED
Custom Building
Houses - Garages
Pole Barns
Roofing - Siding
Concrete Work
FREE ESTIMATES
Call 475-1218
8tf

FOR SALE
3-Bedroom House
In Chelsea
1½ baths, brick, full basement,
fireplace, 2-car garage, 15 yrs. old.
For appointment to see
Call 475-2888
after 4 p.m. week days,
anytime on week-ends. x85

McCulloch
Portable Generators
Chain Saws
WE SELL, SERVICE,
SHARPEN AND TRADE.
Chelsea Hardware
21tf

WANT ADS

FOR RENT — Full Service Center
for meetings, parties, wedding
receptions, etc. Weekdays or
week-ends. Contact John Wellnitz,
phone 475-1818. x31tf

HEATING
SPECIALISTS
HILLTOP INC.
8316 Werkner Rd., Chelsea.
x31tf

PARTS
A hard to find item? Call us.

NEW
INSTALLATION
Want the best? Call us.

SERVICE
Furnace out? Call us.

475-2949
"Serving the area
for over 20 years" x26tf

FRISINGER
NEW LISTING — New 4-bedroom
home, 2 baths, dining area, 2
fireplaces, beautiful setting on 2
acres, Chelsea schools. \$73,000.

HALF MOON LAKE — Waterfront
with 2 bedrooms, nice beach,
glazed-in porch, Chelsea schools.
\$84,900.

BRICK RANCH — 3-bedroom, 3
baths, walk-out lower level, fam-
ily room, patio, small pond.

BUILDING SITES—Rolling, wood-
ed, 5 acres, 10 acres to 25 acres,
Chelsea schools, easy to Jackson
and Ann Arbor.

FRISINGER
REALTORS
Chelsea 475-8681

EVES:
Paul Frisinger 475-2621
Herman Koenig 475-2613
Bob Koch 426-4754
x34tf

SAND GRAVEL
KLINK
EXCAVATING
Bulldozer - Backhoe
Road Work - Basements
Trucking - Crane Work
Top Soil - Demolition
Drainfield - Septic Tank
Trenching, 5' up
Industrial, Residential, Commercial
CALL 475-7631
13tf

W. A. THOMAS
COMPANY
1035 N. Fletcher Rd.
Chelsea

HELP WANTED
An equal opportunity employer.
x33tf

WE HAVE LISTINGS in the Dex-
ter, Chelsea, and Lakes areas.
Call us for your next home.

ED COY REALTY
426-3948
Member Ann Arbor Board
of Realtors
Ed Coy 426-8235
Rae Kozlowski 426-8874
List your home with us
x10tf

LAND CONTRACTS & MORT-
GAGES wanted—Land contracts
purchased, any amount, anywhere
in Michigan. Lowest discounts.
Can also make real estate mort-
gages. Call Dan Duncanson any-
time, Ann Arbor Real Estate Co.,
668-8595. x27tf

MAUSOLEUMS ★ MONUMENTS
BRONZE TABLETS ★ MARKERS
BECKER
MEMORIALS
6033 Jackson Road
ANN ARBOR, MICHIGAN

WANT ADS

FOR SALE — At Harrison, Mich.,
year-round home, all modern and
insulated, close to 2 lakes, natural
gas heat and fireplace. Ph. 429-4311.
x28tf

Complete
Body Repair
Service
Bumping — Painting
Windshield and Side Glass
Replacement
Free Pick-up and Delivery
Open Monday Until 8

CONTACT DON KNOLL
FOR FREE ESTIMATE

Village
Motor Sales, Inc.
CHRYSLER — DODGE
PLYMOUTH — DODGE TRUCKS
Phone 475-8061
1185 Manchester Rd., Chelsea
Hours: 8 a.m. to 5:30 p.m.
9 a.m. to 1 p.m. Saturday
Tues. thru Fri. Until 8 Monday
x14tf

LEONARD REITH
Master Plumber
Licensed Electrician
Hot Water Heat
18238 N. Territorial
Rd.
Chelsea, Mich. 48118
Phone: 475-2044
52tf

FOR RENT:
Music Machines
Juke Boxes
for Parties,
Receptions or
Any Social Gathering.
CALL
Zemke
Operated Machines
Days 662-1771 x38tf

RON MONTANGE
CONSTRUCTION
—Full carpentry services
(rough & finish)
—Additions & remodeling
—Garages
—Repairs
—Roofing and Siding
—Cabinets & formica work
—Farm Buildings
—Excavating & trenching
QUALITY WORKMANSHIP
FREE ESTIMATES
Ph. 475-1080
19tf

J. R. CARRUTHERS
LICENSED
RESIDENTIAL BUILDER
CUSTOM HOMES
ADDITIONS/FIREPLACES
PATIO
ROOFING/SIDING/REPAIRS
475-7234
CHELSEA
30tf

Land Contracts and
Mortgages Wanted
LAND CONTRACTS purchased,
any amount, anywhere in Mich-
igan. Lowest discounts. Can also
make real estate mortgages.
Call Dan Duncanson anytime, Ann
Arbor Real Estate Co., 668-8595.
7tf

PIANO LESSONS in my home. Ex-
perienced, references. Ph. 475-
8523. x37

WANT ADS

CORRECTIVE HORSESHOEING
and trimming. Mike Brisbold.
Ph. 567-3038. x35tf

VACUUM CLEANERS
Authorized Electrolux
sales and service.
James Cox
428-8444, or 428-8686
118 Riverside Dr., Manchester.
48tf

ATTIC
INSULATION
Class I
Cellulose Insulation
installed by trained
installers

FOAM
WALL INSULATION
Highest thermal efficiency
of any insulation type.
New and Existing Construction.

FOAM MASTERS
Complete insulation contractor
Licensed and Insured.
475-1625
Free Estimates
x31tf

Automotive
Rust Proofing
Cars and Trucks
Village
Motor Sales, Inc.
CHRYSLER - DODGE
PLYMOUTH - DODGE TRUCKS
Phone 475-8061
1185 Manchester Rd., Chelsea
Hours: 8 a.m. to 5:30 p.m.
Tues. thru Fri. Until 8 Monday
9 a.m. to 1 p.m. Saturday
21tf

HOUSE FOR SALE
In village of Waterloo on 1½ acres.
Two bedrooms or more, large
family room with kitchen and fire-
place, basement, garage, large at-
tic, 1½ baths, insulated. Nice 1,400-
sq. ft. barn. Separate old school-
house on quiet Washington St.
\$50,000. Call 475-8111 afternoons or
evenings. x35

QUASAR
TELEVISION
Sales & Service
Service on most major brands.
Also, antenna installation and
antenna supplies.

PORTER'S TV
212 Buchanan St., Chelsea
Ph. 475-8380
4

RADIO, STEREO AND
PHONOGRAPH REPAIR
CB Sales & Installation
Second Class License
THE MUSIC HUTCH
8407 Main St., Dexter
426-4380 x26tf

CERTIFIED INCOME TAX SERV-
ICE, one week preparation, Sen-
ior Citizens, Homestead Property
Tax, Michigan and Federal Taxes.
Ph. 475-2250, evenings and week-
ends. x33tf

FOR SALE — Unicorn log splitters
for tractors, trucks and garden
tractors. \$275 to \$325. Call 475-8316
for free demonstration. Demonstra-
tion every Saturday at 1 p.m. 10195
Easton Rd., Dexter, Mi. x87

— YOUNG —
We list and sell lake, country and
town properties. Eugene Young,
Real Estate & Builder, 878-3792,
1596 Dexter-Pinckney Rd., Pinck-
ney 48169. x34tf

PIANO TUNING and repair. Qual-
ified technician. Call Ron Har-
ris, 475-7134. x10tf

CASH FOR
LAND CONTRACTS
Any type of real estate
throughout Michigan
No commissions or costs
First National Accept
Call Free 1-800-292-1550

WANT ADS

CARPENTER WORK — Inside or
out. Mr. Coburn, 475-2899. 10tf

HELP WANTED — Experienced
cosmetologist with references in
Stockbridge area. Ph. (517) 351-
7213. x22tf

SKIS FOR SALE—K-2 Twos 200
cm. skis. Great powder skis.
Only \$20 or best offer. May be
seen at Chelsea Standard office, or
phone 662-0524 after 5 p.m. x25tf

STEP UP TO
KOZMA
CONSTRUCTION
And
Step
Down
In
Price

LICENSED
BUILDER
FREE ESTIMATES
COMPLETE
CONSTRUCTION
SERVICES

CALL
LEN KOZMA
475-7452
29tf

FOR SALE — 10-acre parcels near
Chrysler Proving Grounds. Ph.
475-8234. 24tf

FOR SALE — Fantastic building
site, 9 terraced acres with spring-
fed pond on Madden Rd. in Dexter
school district. Call Midwest Brok-
ers, 994-0700. x25tf

ROOMS by day, week or month.
Excellent for the single man or
retiree. Sylvan Hotel, Chelsea. Ph.
475-2911. x31tf

FOR SALE—100 to 125 thousand
BTU fuel oil boiler, American
Standard. Complete except for
water circulator. \$125. Ph. 475-7556
or 475-8631. x38

PART-TIME CLERICAL reception-
ist with excellent typing and
phone manner. Please send com-
plete resume to Box FE2, care of
Chelsea Standard. x35

TYPISTS
and
CLERKS
NEEDED for temporary job assign-
ments in the Ann Arbor area.
No fees. Call Sue Zink at 971-1631
for more information.

Gerry Rushing
Temporary Help
Service
x31tf

ROOFING SPECIALIST—All types
of roof repairs, homes, barns,
commercial. Insurance repairs. As-
phalt shingles, hot built-up roofing,
cedar-shingle tile-asbestos. Awnings
and porch enclosures. Siding and
storm windows. Call Joe Hayes for
free estimates. Manchester, 428-
8520. x39tf

HOMEMAKERS interested in mak-
ing good extra money working
from home in your spare time.
Please call Barb or Gayle at 475-
7310. x38

BABYSITTER needed Monday
thru Friday, 2:30 p.m. to 5:30
p.m. in my home, for twins. Ph.
475-8712 after 5 p.m. High school
girl welcome. x35

SEAMLESS ALUMINUM eaves-
troughs, roofing, siding, and
carpentry work of all kinds. Ex-
perienced installers. All work
guaranteed. For free estimate,
call R. D. Kleinschmidt Co., 428-
8836. x31tf

FOR SALE—10- and 12-acre build-
ing sites, Chelsea schools, north
of Chelsea, nice area. Low down
payment, low monthly payments.
Ph. 475-2419. x34tf

FOR SALE — 1973 Speedway snow-
mobile, 295 Kohler engine. Ph.
475-9604. x27tf

2 RABBITS FOR SALE — Male
and female, cages included, \$10.
Ph. 426-4049. x25tf

SLEEPING ROOM for rent in
Chelsea. Linens furnished, \$85
per month. Ph. 475-9630. x35

WILL BABYSIT in my home —
South school area, days. Ph. 475-
8544. x25tf

CAR RENTAL by the day, week,
end, week or month. Full insur-
ance coverage, low rates. Call
Lyle Christwell at Palmer Motor
Sales, 475-1301. x25tf

FOR SALE—Flute, with case, \$100.
Two full-size canopy beds, dress-
ers, \$125 each. Ph. 475-2139. x35

WANT ADS

FOR RENT — 1977 Ford 12-Pass.
Club Wagon Buses and Ecooline
Vans by the day, week-end, week
or month. Insurance. Palmer Ford
222 S. Main, 475-1301 for rates. 33tf

CUSTOM SEWING and alterations.
Ph. 475-2248. x38tf

PATCHING and PLASTERING.
Call 475-7489. x31tf

CAR & TRUCK LEASING — For
details see Lyle Christwell at
Palmer Motor Sales, 475-1301, 49tf

WILL BABYSIT in my licensed
home. References. Ph. 475-2322.
x32tf

1971 CAMARO, V-8, 4-speed, p.s.,
p.b. Lloyd Bridges Chevrolet
Chelsea. Ph. 475-1373. x35

12th Annual
\$300.00
Allowance Sale
For Any Car!

\$300 allowance regardless of age
make or model. If need be, we
will even tow. This is the mini-
mum. Hundreds more depending
on year and condition.

'77 FORD pick-up \$3595
Minimum Allowance \$ 300

'77 LTD 4-dr. \$2895
Minimum Allowance \$ 300

'76 PINTO 3-dr. \$2795
Minimum Allowance \$ 300

'75 CHEV pick-up \$2695
Minimum Allowance \$ 300

'75 CHEV Impala \$2995
Minimum Allowance \$ 300

'74 MONTEGO 4-dr. \$1995
Minimum Allowance \$ 300

'74 PINTO 2-dr. \$1795
Minimum Allowance \$ 300

'74 PINTO Wagon \$1995
Minimum Allowance \$ 300

'74 OUTLASS 2-dr. \$2895
Minimum Allowance \$ 300

'74 PINTO Wagon \$2095
Minimum Allowance \$ 300

'74 LTD Squire Wagon \$2495
Minimum Allowance \$ 300

'73 VW Beetle \$2195
Minimum Allowance \$ 300

'73 FORD Wagon \$995
Minimum Allowance \$ 300

'73 MONTEGO 2-dr. \$1295
Minimum Allowance \$ 300

'72 PINTO \$795
Minimum Allowance \$ 300

SALE ENDS FEB. 15th, 1978

Palmer Motor Sales
Chelsea Ph. 475-1301
x35tf

1973 LEMANS Pontiac 2-dr. V-8,
auto. Lloyd Bridges Chevrolet
Chelsea. Ph. 475-1373. x35

SCHNEIDER'S GROCERY

CHOICE MEATS - FINE FOODS

1-LB. PKG. ECKRICH Beef Franks 99c MCDONALD CHERRY VANILLA	12-OZ. CANS Coke, Tab, 8 pac \$1.49
Ice Cream 1-LB. BOX NABISCO Ritz Crackers . . . 73c 2-LB. BOX BANQUET FROZEN Fried Chicken . . \$1.99 U. S. NO. 1 Idaho Potatoes 10-lb. bag \$1.19	12-OZ. CANS Sprite, Fresca 8 pac \$1.49 24-CT. SIZE Pascal Celery . . . 39c 12-OZ. CAN TROPICANA FROZEN Orange Juice . . . 69c BULK Sauerkraut . . . qt. 69c

121 S. MAIN ST.
PHONE 475-7600

Your Store for
Alexander & Hornung's
Smoked Meats

We Accept
U.S.D.A.
Food Coupons

Your Approval

In the
communities
of our
business.

Staffan Funeral Home
"Funeral Directors for Four Generations"
124 PARK STREET PHONE GR 5-1444

LITTLE WANT ADS! BIG PLUSES FOR BIG RESULTS!

JUST PHONE
475-1371

WANT ADS

1975 BUICK Century 4-dr. V-8, auto., air, 30,000 miles. Lloyd Bridges Chevrolet, Chelsea. Ph. 475-1373. x35

LOST - REWARD

Set of keys with AAA connecting link and Village Motors tag at Schoolhouse Apts. parking lot area. Reward, Call Ricardo's Stylist Shop at 109 N. Main St., ph. 475-1671 or drop off. -35

FOR SALE

Brand New Home

3 bedroom, 1 1/2 baths, energy-saving home on 1 acre. Ready to move in.

\$47,900

WEBER HOMES
Ph. 475-2828

HELP WANTED—Sarah Coventry Jewelry, Management and Sales. Full- and part-time. Free jewelry kit, free training, good money. Ph. (313) 878-9647 (Pinckney) between 8 a.m. and 5 p.m. x37

WANT ADS

1975 PINTO wagon, 4-speed, FM-AM. Lloyd Bridges Chevrolet, Chelsea. Ph. 475-1373. x35

Help Wanted

Qualified personnel needed in inspection and tool making departments.

W. A. Thomas Co.
1035 N. Fletcher Rd. Ph. 475-8626
An equal opportunity employer. x35tf

OUR BUSINESS IS SELLING BUSINESSES.
Weir Associates
Wolverine Tower, Suite 701
3001 South State Rd.
Ann Arbor, Mich. 48104
Ph. 769-1615 anytime x38

FOR SALE—Kimball grand piano, mahogany finish, \$800. Antique loveseat, \$125. Ph. 1-517-851-8900. x35

1976 CHEVY 1/2-ton pick-up, 4-wheel drive, V-8, auto., p.s., p.b. Lloyd Bridges Chevrolet, Chelsea. Ph. 475-1373. x35

FOR SALE—Two 15" Ford wheels, \$40. Two H78x15 snow tires, \$10 each. Victorian single wooden headboard and footboard with side rails, \$80. Ludwig snare drum with case, 2 years old, \$65. LeBlanc clarinet with case, good condition, \$160. Ph. 475-7305. x36

YOUNG ANN ARBOR COUPLE with 2-year-old daughter seeks older farm home to rent or buy. Will renovate. Ph. 769-4129. x36

1976 CHEVY 1/2-ton pick-up, 4-wheel drive, V-8, auto., p.s., p.b. Lloyd Bridges Chevrolet, Chelsea. Ph. 475-1373. x35

1976 CHEVY 1/2-ton pick-up, 4-wheel drive, V-8, auto., p.s., p.b. Lloyd Bridges Chevrolet, Chelsea. Ph. 475-1373. x35

1976 CHEVY 1/2-ton pick-up, 4-wheel drive, V-8, auto., p.s., p.b. Lloyd Bridges Chevrolet, Chelsea. Ph. 475-1373. x35

1976 CHEVY 1/2-ton pick-up, 4-wheel drive, V-8, auto., p.s., p.b. Lloyd Bridges Chevrolet, Chelsea. Ph. 475-1373. x35

1976 CHEVY 1/2-ton pick-up, 4-wheel drive, V-8, auto., p.s., p.b. Lloyd Bridges Chevrolet, Chelsea. Ph. 475-1373. x35

1976 CHEVY 1/2-ton pick-up, 4-wheel drive, V-8, auto., p.s., p.b. Lloyd Bridges Chevrolet, Chelsea. Ph. 475-1373. x35

1976 CHEVY 1/2-ton pick-up, 4-wheel drive, V-8, auto., p.s., p.b. Lloyd Bridges Chevrolet, Chelsea. Ph. 475-1373. x35

1976 CHEVY 1/2-ton pick-up, 4-wheel drive, V-8, auto., p.s., p.b. Lloyd Bridges Chevrolet, Chelsea. Ph. 475-1373. x35

1976 CHEVY 1/2-ton pick-up, 4-wheel drive, V-8, auto., p.s., p.b. Lloyd Bridges Chevrolet, Chelsea. Ph. 475-1373. x35

1976 CHEVY 1/2-ton pick-up, 4-wheel drive, V-8, auto., p.s., p.b. Lloyd Bridges Chevrolet, Chelsea. Ph. 475-1373. x35

1976 CHEVY 1/2-ton pick-up, 4-wheel drive, V-8, auto., p.s., p.b. Lloyd Bridges Chevrolet, Chelsea. Ph. 475-1373. x35

1976 CHEVY 1/2-ton pick-up, 4-wheel drive, V-8, auto., p.s., p.b. Lloyd Bridges Chevrolet, Chelsea. Ph. 475-1373. x35

1976 CHEVY 1/2-ton pick-up, 4-wheel drive, V-8, auto., p.s., p.b. Lloyd Bridges Chevrolet, Chelsea. Ph. 475-1373. x35

1976 CHEVY 1/2-ton pick-up, 4-wheel drive, V-8, auto., p.s., p.b. Lloyd Bridges Chevrolet, Chelsea. Ph. 475-1373. x35

1976 CHEVY 1/2-ton pick-up, 4-wheel drive, V-8, auto., p.s., p.b. Lloyd Bridges Chevrolet, Chelsea. Ph. 475-1373. x35

1976 CHEVY 1/2-ton pick-up, 4-wheel drive, V-8, auto., p.s., p.b. Lloyd Bridges Chevrolet, Chelsea. Ph. 475-1373. x35

1976 CHEVY 1/2-ton pick-up, 4-wheel drive, V-8, auto., p.s., p.b. Lloyd Bridges Chevrolet, Chelsea. Ph. 475-1373. x35

1976 CHEVY 1/2-ton pick-up, 4-wheel drive, V-8, auto., p.s., p.b. Lloyd Bridges Chevrolet, Chelsea. Ph. 475-1373. x35

1976 CHEVY 1/2-ton pick-up, 4-wheel drive, V-8, auto., p.s., p.b. Lloyd Bridges Chevrolet, Chelsea. Ph. 475-1373. x35

1976 CHEVY 1/2-ton pick-up, 4-wheel drive, V-8, auto., p.s., p.b. Lloyd Bridges Chevrolet, Chelsea. Ph. 475-1373. x35

1976 CHEVY 1/2-ton pick-up, 4-wheel drive, V-8, auto., p.s., p.b. Lloyd Bridges Chevrolet, Chelsea. Ph. 475-1373. x35

1976 CHEVY 1/2-ton pick-up, 4-wheel drive, V-8, auto., p.s., p.b. Lloyd Bridges Chevrolet, Chelsea. Ph. 475-1373. x35

1976 CHEVY 1/2-ton pick-up, 4-wheel drive, V-8, auto., p.s., p.b. Lloyd Bridges Chevrolet, Chelsea. Ph. 475-1373. x35

1976 CHEVY 1/2-ton pick-up, 4-wheel drive, V-8, auto., p.s., p.b. Lloyd Bridges Chevrolet, Chelsea. Ph. 475-1373. x35

1976 CHEVY 1/2-ton pick-up, 4-wheel drive, V-8, auto., p.s., p.b. Lloyd Bridges Chevrolet, Chelsea. Ph. 475-1373. x35

1976 CHEVY 1/2-ton pick-up, 4-wheel drive, V-8, auto., p.s., p.b. Lloyd Bridges Chevrolet, Chelsea. Ph. 475-1373. x35

1976 CHEVY 1/2-ton pick-up, 4-wheel drive, V-8, auto., p.s., p.b. Lloyd Bridges Chevrolet, Chelsea. Ph. 475-1373. x35

1976 CHEVY 1/2-ton pick-up, 4-wheel drive, V-8, auto., p.s., p.b. Lloyd Bridges Chevrolet, Chelsea. Ph. 475-1373. x35

1976 CHEVY 1/2-ton pick-up, 4-wheel drive, V-8, auto., p.s., p.b. Lloyd Bridges Chevrolet, Chelsea. Ph. 475-1373. x35

WANT ADS

1977 CAMERO, V-8, auto., 8,000 miles. Lloyd Bridges Chevrolet, Chelsea. Ph. 475-1373. x35

Clearance Sale New '77 Cars & Trucks In Stock

'77 DODGE W-150, 4-wheel drive, 115-in. wheelbase, Macho pkg., 360, auto., p.s., p.b., AM-FM stereo, 115-in. wheelbase, Macho pkg., 360, auto., p.s., p.b., AM-FM stereo. SAVE

DEMO

'78 LE BARON Medallion 4-dr., 318, auto., p.s., p.b., leather interior, air, etc. SAVE

'78 VOLARE coupe, 225, auto., p.s., p.b., bucket seats, stereo SAVE

'78 ASPEN Custom 4-dr., 6-cyl., auto., p.s. SAVE

'78 DODGE F-100, 8 1/2-ft. box, 360, auto., p.s., p.b., air, AM-FM, 11,845 miles. \$3795

'76 FORD F-150 pick-up, 6-cyl., auto., p.s., sliding rear window, 10,000 original miles. \$3695

'76 CHEVY Van, 350, auto., p.b., camper conversion, R & D 12 tires. \$4295

'75 PLYMOUTH Voyager Sport, V-8, auto., p.s., p.b., air cond. \$4995

'75 PLYMOUTH Voyager, 318, auto., p.s., p.b., low mileage. \$3995

'75 CHEVY Suburban, 350, auto., p.s., p.b., air, Sure-Grip, Scottsdale pkg. \$3995

'75 DODGE W-100, 4-wheel drive pick-up, 318, 4-speed, p.s., p.b., Meyers snow plow. \$4995

'67 FORD 1/2-ton pick-up, 6-cyl., 3-speed. \$495

'76 VOLARE Road Runner coupe, 318, 4-speed overdrive, p.s. \$2995

'76 PINTO Runabout, 4-speed, low mileage. \$2995

'75 CADILLAC Eldorado coupe, full power, white exterior and leather interior. \$4995

'72 PLYMOUTH Fury 4-dr., 360, auto., p.s., p.b., air cond., one owner. \$1095

'72 CHEVY Bel Air 4-dr., V-8, auto., p.s. \$895

'72 CHRYSLER Newport 4-dr., V-8, auto., p.s., p.b., air cond., powerlocks. \$1095

'71 FORD station wagon, V-8, auto., p.s. \$395

'71 FORD station wagon, V-8, auto., p.s. \$395

'71 FORD station wagon, V-8, auto., p.s. \$395

'71 FORD station wagon, V-8, auto., p.s. \$395

'71 FORD station wagon, V-8, auto., p.s. \$395

'71 FORD station wagon, V-8, auto., p.s. \$395

'71 FORD station wagon, V-8, auto., p.s. \$395

'71 FORD station wagon, V-8, auto., p.s. \$395

'71 FORD station wagon, V-8, auto., p.s. \$395

'71 FORD station wagon, V-8, auto., p.s. \$395

'71 FORD station wagon, V-8, auto., p.s. \$395

'71 FORD station wagon, V-8, auto., p.s. \$395

'71 FORD station wagon, V-8, auto., p.s. \$395

'71 FORD station wagon, V-8, auto., p.s. \$395

'71 FORD station wagon, V-8, auto., p.s. \$395

'71 FORD station wagon, V-8, auto., p.s. \$395

'71 FORD station wagon, V-8, auto., p.s. \$395

WANT ADS

1972 CHEVY window van, V-8, auto., p.s., p.b. Lloyd Bridges Chevrolet, Chelsea. Ph. 475-1373. x35

WATERLOO REALTY

CAVANAUGH LAKE — 2-bedroom year-round home. Large, paneled living room, enclosed porch (great for summer enjoyment). Mature trees on 66x80 ft. lot. Chelsea schools. \$30,000.

2-BEDROOM RANCH HOME—Less than two years old. Aluminum siding. Fully insulated. Patio doors to deck from large kitchen. Recreation room in full basement. On one acre, 20 minutes northwest of Chelsea. \$33,500.

DEXTER AREA HORSE FARM—Lovely 5-bedroom home on one level. 2,450 sq. ft. of luxurious comfort. 2 1/2 baths. Double-faced fireplace adds charm to spacious living room and very large family room. Central air. Heated garage. Third fireplace in partially finished recreation room in basement. Large cedar-sided stable and feed barn. 10.5 acres completely fenced. Neighborhood of fine homes. Much more. Phone us to see this beautiful property. \$110,000.

2 PRETTY ACRES, east of Grass Lake, rolling terrain, 15 min. from Chelsea. \$8,000.

5 ACRES—Surveyed, slight roll, 4" casing well, three minutes from Chelsea. \$16,500.

10 ACRES—Very gentle roll, surveyed, blacktop road. Stockbridge schools. \$15,000.

11 ACRES—Beautiful rolling site in area of nice homes. Easy access to I-94. \$22,500.

TAKE A LOOK at this 1.4 acres. All high with pleasant view. Approx. a mile from Chelsea. \$11,500.

ROBERT H. THORNTON JR., P.C. REALTOR

WATERLOO REALTY
355 Clear Lake
JOANN WARYWODA, BROKER
Phone 475-8674

Evenings and Sundays:
Jerry Gondek 475-8285
Paul Erickson 475-7322
Sue Lewa 1-517-522-5252
Carol Lakatos 475-7129

WANTED TO RENT—2- or 3-bedroom house or duplex in Dexter area. Ph. 434-1329. x35

1978 BUICK DEMOS

LE SABRE Custom 2-dr. hardtop, V-8, auto., p.s., p.b., AM-FM, air. Only 2,000 miles. SAVE-SAVE-SAVE.

CENTURY Custom wagon, 6-cyl., auto., air, AM-FM, luggage rack, cruise control. Only 2,100 miles. SAVE-SAVE-SAVE.

USED CARS

1978 BUICK Limited 4-dr. sedan. Factory official's car. Full power, fully equipped, undercoated, original sticker \$10,353. Only 4,000 miles. Only \$7795

1977 BUICK Century Special 2-dr. hardtop, V-6, auto., p.s., p.b., speed control, air, AM-FM stereo. One owner. Only \$4495

1976 DODGE Aspen station wagon, 6-cyl., auto., p.s. Low mileage. One owner. Only \$3295

1974 DATSUN 1/2-ton pick-up, 4-cyl., 1-d. trans., AM radio. Only \$2195

NEW HOURS
Mon., Tues., Wed., Fri., 8:00-5:30
Thurs., 8:00-9:00
Sat., 9:00-1:00

SPRAGUE
Buick-Olds-Opel, Inc.
1500 S. Main St., Chelsea
Ph. 475-8664

WOMEN TO WORK in small manufacturing shop. Must be 18 years old with own transportation. No experience necessary, but must be ambitious. Pays hospitalization and vacation plan. Starting wage \$3 per hour with rapid advancement. Apply in person, 9 a.m.-noon at C & C Industries, 2716 Baker Rd., Dexter. x35

HOMEMAKER WANTED to work limited hours for family service agency in western Washtenaw. No educational requirements, but car necessary. Ph. 971-6528 for information. x37

1972 DODGE 1/2-ton pick-up, V-8, auto. Lloyd Bridges Chevrolet, Chelsea. Ph. 475-1373. x35

FOR RENT—6-bedroom, semi-furnished apartment in country. Available latter half of February. References required. No pets. Please send replies to Box FE-8, care of Chelsea Standard, Chelsea 48118. x35

FOR SALE—1975 Gremlin X. Good condition. 30,000 miles. Ph. Pat after 6 at 971-5444. x35

1975 FORD Chateau van, 12-pass. V-8, auto. Lloyd Bridges Chevrolet, Chelsea. Ph. 475-1373. x35

1975 FORD Chateau van, 12-pass. V-8, auto. Lloyd Bridges Chevrolet, Chelsea. Ph. 475-1373. x35

1975 FORD Chateau van, 12-pass. V-8, auto. Lloyd Bridges Chevrolet, Chelsea. Ph. 475-1373. x35

1975 FORD Chateau van, 12-pass. V-8, auto. Lloyd Bridges Chevrolet, Chelsea. Ph. 475-1373. x35

1975 FORD Chateau van, 12-pass. V-8, auto. Lloyd Bridges Chevrolet, Chelsea. Ph. 475-1373. x35

1975 FORD Chateau van, 12-pass. V-8, auto. Lloyd Bridges Chevrolet, Chelsea. Ph. 475-1373. x35

1975 FORD Chateau van, 12-pass. V-8, auto. Lloyd Bridges Chevrolet, Chelsea. Ph. 475-1373. x35

1975 FORD Chateau van, 12-pass. V-8, auto. Lloyd Bridges Chevrolet, Chelsea. Ph. 475-1373. x35

1975 FORD Chateau van, 12-pass. V-8, auto. Lloyd Bridges Chevrolet, Chelsea. Ph. 475-1373. x35

WANT ADS

1973 DODGE van, 9-pass. V-8, auto., p.s., p.b. Lloyd Bridges Chevrolet, Chelsea. Ph. 475-1373. x35

THORNTON 475-8628

PRIVATE & PEACEFUL location for this beautiful 4 bdrm. ranch on 1 1/2 acres. 2,800 sq. ft. of living space including rec. room, 4 bdrms, 3 baths and full walkout basement. PLUS 1 1/2-car detached garage. \$70,900.

ON OVER AN ACRE just outside the Village of Stockbridge. Attractive 3-bedroom family home. Offers hardwood floors, 2 ceramic tiled baths, cedar lined walk-in closets. Fireplace. Garage. \$48,000.

A REAL BUY—Excellent country ranch just 1 mile from Chelsea on 2 acres. Family room with fireplace. 3 bedrooms. Country kitchen. Walkout basement. Owners anxious. \$62,000.

VACANT LAND

11 ACRES—Beautiful rolling site in area of nice homes. Easy access to I-94. \$22,500.

TAKE A LOOK at this 1.4 acres. All high with pleasant view. Approx. a mile from Chelsea. \$11,500.

ROBERT H. THORNTON JR., P.C. REALTOR

WATERLOO REALTY
355 Clear Lake
JOANN WARYWODA, BROKER
Phone 475-8674

Evenings and Sundays:
Jerry Gondek 475-8285
Paul Erickson 475-7322
Sue Lewa 1-517-522-5252
Carol Lakatos 475-7129

WANTED TO RENT—2- or 3-bedroom house or duplex in Dexter area. Ph. 434-1329. x35

1978 BUICK DEMOS

LE SABRE Custom 2-dr. hardtop, V-8, auto., p.s., p.b., AM-FM, air. Only 2,000 miles. SAVE-SAVE-SAVE.

CENTURY Custom wagon, 6-cyl., auto., air, AM-FM, luggage rack, cruise control. Only 2,100 miles. SAVE-SAVE-SAVE.

USED CARS

1978 BUICK Limited 4-dr. sedan. Factory official's car. Full power, fully equipped, undercoated, original sticker \$10,353. Only 4,000 miles. Only \$7795

1977 BUICK Century Special 2-dr. hardtop, V-6, auto., p.s., p.b., speed control, air, AM-FM stereo. One owner. Only \$4495

1976 DODGE Aspen station wagon, 6-cyl., auto., p.s. Low mileage. One owner. Only \$3295

1974 DATSUN 1/2-ton pick-up, 4-cyl., 1-d. trans., AM radio. Only \$2195

NEW HOURS
Mon., Tues., Wed., Fri., 8:00-5:30
Thurs., 8:00-9:00
Sat., 9:00-1:00

SPRAGUE
Buick-Olds-Opel, Inc.
1500 S. Main St., Chelsea
Ph. 475-8664

WOMEN TO WORK in small manufacturing shop. Must be 18 years old with own transportation. No experience necessary, but must be ambitious. Pays hospitalization and vacation plan. Starting wage \$3 per hour with rapid advancement. Apply in person, 9 a.m.-noon at C & C Industries, 2716 Baker Rd., Dexter. x35

HOMEMAKER WANTED to work limited hours for family service agency in western Washtenaw. No educational requirements, but car necessary. Ph. 971-6528 for information. x37

1972 DODGE 1/2-ton pick-up, V-8, auto. Lloyd Bridges Chevrolet, Chelsea. Ph. 475-1373. x35

FOR RENT—6-bedroom, semi-furnished apartment in country. Available latter half of February. References required. No pets. Please send replies to Box FE-8, care of Chelsea Standard, Chelsea 48118. x35

FOR SALE—1975 Gremlin X. Good condition. 30,000 miles. Ph. Pat after 6 at 971-5444. x35

1975 FORD Chateau van, 12-pass. V-8, auto. Lloyd Bridges Chevrolet, Chelsea. Ph. 475-1373. x35

1975 FORD Chateau van, 12-pass. V-8, auto. Lloyd Bridges Chevrolet, Chelsea. Ph. 475-1373. x35

1975 FORD Chateau van, 12-pass. V-8, auto. Lloyd Bridges Chevrolet, Chelsea. Ph. 475-1373. x35

1975 FORD Chateau van, 12-pass. V-8, auto. Lloyd Bridges Chevrolet, Chelsea. Ph. 475-1373. x35

1975 FORD Chateau van, 12-pass. V-8, auto. Lloyd Bridges Chevrolet, Chelsea. Ph. 475-1373. x35

1975 FORD Chateau van, 12-pass. V-8, auto. Lloyd Bridges Chevrolet, Chelsea. Ph. 475-1373. x35

1975 FORD Chateau van, 12-pass. V-8, auto. Lloyd Bridges Chevrolet, Chelsea. Ph. 475-1373. x35

1975 FORD Chateau van, 12-pass. V-8, auto. Lloyd Bridges Chevrolet, Chelsea. Ph. 475-1373. x35

1975 FORD Chateau van, 12-pass

NOTICE

Lima Township Taxpayers

Office hours for collecting taxes will be Wednesdays and Fridays 9 a.m. to 6 p.m., Saturdays 9 a.m. to 12 noon Dec. 1 through Feb. 25, Monday, Feb. 27, 9 a.m. to 6 p.m., Tuesday, Feb. 28, 9 a.m. to 12 midnight. Will be at Chelsea State Bank all Fridays in February, 9 to 11:30 a.m. and 1 to 5 p.m. Those who wish may send check, Receipt will be returned by mail.

All Dog Licenses must be paid to Lima Township Treasurer before March 1, 1978, to avoid penalty.

ALL DOG LICENSES \$4.00
Rabies Vaccination Papers must be presented in order to obtain dog license.

JEAN TILT

LIMA TOWNSHIP TREASURER

NOTICE

DEXTER TOWNSHIP TAXPAYERS

I will be at Dexter Township Hall, 6880 Dexter-Pinckney Rd., Dexter, to collect Dexter Township taxes on the following days: every Wednesday afternoon 1 to 4 p.m., and Friday, 9 a.m. to 5 p.m. through December, 9 to 4 in January and February.

Those who wish may send check or money order. Receipts will be returned by mail.

All dog licenses must be paid to the Dexter Township treasurer before March 1, 1978 to avoid penalty.

ALL DOG LICENSES \$4.00

Rabies vaccination papers must be presented in order to obtain dog licenses.

LORINDA JEDELE
DEXTER TOWNSHIP TREASURER

Advertise Your Auction in The Standard!

—NOTICE—

Sylvan Township Taxpayers

Sylvan Township Treasurer will be at Sylvan Township Hall, 112 W. Middle St., Chelsea, to collect Sylvan Township Taxes every Wednesday and Friday from 1 to 5 p.m., and Saturday from 10 a.m. to 3 p.m., beginning Friday, Dec. 3 until Feb. 28, 1978.

CHECKS WILL BE ACCEPTED BY MAIL

All Dog Licenses must be paid to Sylvan Township Treasurer before March 1, 1978, to avoid penalty.

ALL DOG LICENSES \$4.00

Rabies Vaccination papers must be presented in order to obtain license.

FRED W. PEARSALL

SYLVAN TOWNSHIP TREASURER
Phone 475-7251

NOTICE

LYNDON TOWNSHIP TAXPAYERS

I will be at my home at 9508 Beeman Rd. to collect Lyndon Township taxes and issue dog licenses every Monday and Friday between 10:00 a.m. and 4:00 p.m. during December, January, and February, and at the Chelsea State Bank, Saturdays, February 18 and 25 between 9:00 a.m. and 12:00 noon.

Those who wish may send check or money order in payment of taxes and dog licenses. Enclose complete tax notice. Receipts will be returned by mail.

All dog licenses must be paid to the Lyndon Township Treasurer before March 1, 1978 to avoid penalty.

ALL DOG LICENSES \$4.00

Unexpired Rabies Vaccination Papers must be presented to obtain license.

BARBARA RODERICK

LYNDON TOWNSHIP TREASURER
9508 Beeman Rd., Grass Lake, MI 49240 Ph. 475-7056

AREA DEATHS

Flora Schieferstein

Had Worked Many Years at Heydlauff's Before Retiring

Flora May Schieferstein, 77, of 722 S. Main St., died Friday, Feb. 3, at her home. She had lived and worked in Chelsea most of her life including many years as a bookkeeper at Heydlauff's before her retirement.

Miss Schieferstein was a member of the First Congregational church.

She is survived by three first-cousins, Mrs. Beth Freeman of Ann Arbor, Joseph Taylor of Dexter, and Thomas Taylor of Ann Arbor; several other cousins; and many friends. Both of her parents preceded her in death in 1954.

Funeral services were held Monday, Feb. 6, 2 p.m., at Staffan Funeral Home with the Rev. Carl W. Schwarm officiating. Burial followed in Oak Grove Cemetery.

Raymond D. Stoker

Grass Lake Area Farmer Dies Jan. 26 at Home

Raymond D. Stoker, 81, of 11041 Glen Rd., Grass Lake, died Sunday, Jan. 26. A life-long resident of the Grass Lake area, he was born May 1, 1896, in his farm home on Glenn Rd.

Mr. Stoker was a retired farmer at the time of his death, and a member of the Washtenaw County Farm Bureau.

He was preceded in death by his wife, Bessie, on Nov. 2, 1977.

Survivors include seven sons, Merle (Jack) of Ann Arbor, Earl of Chelsea, Donald, Howard, Lloyd, Robert and Gary, all of Grass Lake; six daughters, Mrs. Gale (Marilyn) Loveland, Mrs. Jack (Margaret) Corey, Mrs. Charles (Janet) Ellis, Mrs. Betty Walbrook, all of Grass Lake, Mrs. Richard (Doris) Edinger, of Jackson, Mrs. Wayne (Ruth) Clark of Leslie; 40 grandchildren; 12 great-grandchildren; and one brother, Russell, of Grass Lake. A son, Keith, preceded him in death.

Funeral services were held Tuesday, Feb. 2, at the Charles J. Burden & Son Funeral Home-Stormont Chapel, with the Rev. R. H. Brando and the Rev. Forrest Cook officiating. Burial followed in East Cemetery, Grass Lake.

Memorial contributions may be made to St. John's United Church of Christ, Francisco.

Legals

MORTGAGE SALE
Default having been made in the terms and conditions of a certain mortgage made by HARRY T. HARADA also known as Harry T. Harada, and MYRTLE E. HARADA, his wife (Mortgagors) of Washtenaw County, Michigan, and assumed by Martha McKinstry of Washtenaw County, Michigan by deed dated May 21, 1976 and recorded on May 25, 1976, Liber 3454, Page 26, and recorded in the office of the Register of Deeds for the County of Washtenaw and State of Michigan, on the 3rd day of November, 1977, in Liber 3786 of Washtenaw County Records, on page 407, which said mortgage was thereupon assigned to Ridgewood Savings Bank by assignment dated February 17, 1972, and recorded on March 6, 1972, in the office of the Register of Deeds for said County of Washtenaw in Liber 3388 of Washtenaw County Records, on page 886, which mortgage there is claimed to be due, at the date of this notice, for principal and interest, the sum of Twenty Thousand Six Hundred Twenty-eight and 61/100 (\$20,628.61) Dollars;

And no suit or proceedings at law or in equity having been instituted to recover the debt secured by said mortgage or any part thereof. Now, Therefore, by virtue of the power of sale contained in said mortgage, and pursuant to the statute of the State of Michigan in such case made and provided, notice is hereby given that on Thursday, the 16th day of March, 1978, at 10:00 o'clock a.m. Local Time, said mortgage will be foreclosed by a sale at public auction to the highest bidder at the Huron Street entrance of the Washtenaw County Building in the City of Ann Arbor, County of Washtenaw, Michigan, (that being the building where the Circuit Court for Washtenaw County is held), of the premises described in said mortgage, or so much thereof as may be necessary to pay the amount due, as aforesaid, on said mortgage, with the interest thereon at seven per cent (7%) per annum and all legal costs, charges and expenses, including the attorney fees allowed by law, and also any sum or sums which may be paid by the undersigned, necessary to protect the interest in the premises. Which said premises are described as follows: All that certain piece of land situated in the City of Ypsilanti in the County of Washtenaw and State of Michigan, and described as follows: Lot 29, Grove Park Homes Subdivision, as recorded in Liber 19, Pages 72, 73 and 74 of Plats, Washtenaw County Records, more commonly known as 2128 Margery.

During the six months immediately following the sale, the property may be redeemed.

Dated at Birmingham, Michigan, February 3, 1978.

Ridgewood Savings Bank

Assignee of Mortgage.

Howard A. Kahn, P.C.

Attorney for Assignee of Mortgage.

555 South Woodward, Suite 609

Birmingham, Mich. 48011

Feb. 9-16-23-Mar. 2-9

Fr. Francis Wahowiak

Former St. Mary Priest Dies Jan. 30 in Charlotte

The Rev. Fr. Francis B. Wahowiak, 57, of Charlotte, formerly pastor of St. Mary Catholic church, Chelsea, died Monday, Jan. 30, in Charlotte. He was born June 14, 1920, in Wyandotte.

Fr. Wahowiak attended Our Lady of Mt. Carmel High school, Wyandotte; St. Mary's College, Orchard Lake; and St. Mary's Seminary, Norwood, O.

He was ordained Oct. 28, 1946, at Blessed Sacrament Catholic church, Detroit, by the Edward Cardinal Mooney.

Fr. Wahowiak served as associate pastor at Detroit's St. Albertus; Emmett Our Lady of Mt. Carmel, Dearborn Heights; and St. John the Baptist and St. Mark's, Warren.

In 1968, he was named pastor of St. Mary Catholic church, Chelsea, and served there until 1972 when he was transferred to St. Mary's in Charlotte. Fr. Wahowiak was still serving in Charlotte at the time of his death.

A Funeral Mass was conducted Wednesday, Feb. 1, at St. Mary Catholic church, Charlotte. Burial followed Feb. 3 in Our Lady of Mt. Carmel Cemetery, Wyandotte.

Mrs. Frank Chase

Former Area Beauty Shop Owner Dies at Home

Rose B. Chase, 80, of Howell and formerly of Chelsea, died Feb. 2 at Greenbriar Convalescent Center, Howell, following a lengthy illness. She was born Aug. 22, 1897, in Howell, to Fred and Hulda Hagman Montague.

She married Cecil Cone, who preceded her in death in 1924. Later she married Frank "Doc" Chase, who also preceded her in death in 1949.

Mrs. Chase had lived in Chelsea where she operated Rose Beauty Shop before moving to Howell where she reopened Rose Beauty Shop, working there until her retirement.

Survivors include one daughter, Mrs. Karl (Edythe) Koehnefer of Ann Arbor; five grandchildren, including Mrs. Karen Bierer of Howell who had been raised as her daughter; 12 great-grandchildren; one great-great-grandchild; and one brother, Leslie Montague of Lansing.

Funeral services were held Saturday, Feb. 4, 2:30 p.m., at Schnackenberg Chapel of the Lamb Funeral Home with the Rev. Donald Williams of First Baptist church, Howell, officiating. Burial followed in Lakeview Cemetery, Howell.

Mrs. August Dorer

Dies Jan. 31 While Vacationing in Hawaii

Katherine R. Dorer, 81, of 303 E. Middle St., died Tuesday, Jan. 31, while vacationing in Waikiki, Maui, Hawaii. She was born Jan. 28, 1897.

On Oct. 1, 1919, she married August Dorer. He preceded her in death on June 1, 1976. Mrs. Dorer was a member of St. Mary Catholic church and St. Mary's Altar Society. She was also a volunteer at Chelsea Community Hospital and was a member of the Chelsea Senior Citizens.

Survivors include two sons, Vincent (Jerry) and Robert, both of Chelsea; one daughter, Mrs. James (Shirley) Gaken of Chelsea; one brother, John Eder of Chelsea; a sister, Sister Helen Marie of Adrian; 16 grandchildren; and nine great-grandchildren. She was preceded in death by three sisters and two brothers.

A Funeral Mass was conducted Monday, Feb. 6, 11 a.m., at St. Mary Catholic church with the Rev. Fr. David Philip Dupuis officiating. Burial followed in Mt. Olivet Cemetery. The Rosary was recited Sunday, Feb. 5, 7 p.m., at Staffan Funeral Home.

FLORIDA CANALS

Canals in the western Big Cypress Swamp area of Florida undercut the watershed and pour off into the Gulf of Mexico almost 160 billion gallons of fresh water each year—enough to support a city of two million persons. The loss aggravates a severe water crisis in southwest Florida.

Elmo L. Le Van

Waterloo Area Resident Dies Suddenly at Home

Elmo L. Le Van, 74, of 3894 Hart Rd., Grass Lake, died suddenly at his home on Tuesday, Feb. 7. He was born July 11, 1903, in Logan county, O., to Samuel and Letitia Le Van.

He married Zella McConnell in Wayne on March 28, 1925. She survives.

Mr. Le Van had been employed by Federal Service Works in Chelsea during WW-II, and then worked as a carpenter in the Chelsea area until his retirement in 1965.

He was a member of the Waterloo Farm Bureau, the Waterloo Historical Society, and the Waterloo Senior Citizens.

In addition to his widow, he is survived by four daughters, Mrs. Stanley (June) Stork of Canton, Mrs. Cas (Shirley) Case, Mrs. Mrs. Richard (Virginia) Harvey, all of Grass Lake; two sons, Duane M. Le Van of Ann Arbor and Alan R. Le Van of Grass Lake; two sisters; and 13 grandchildren. He was preceded in death by one daughter in 1936, three sisters, and four brothers.

Funeral services will be conducted Friday, Feb. 10, 1 p.m., at the Burghardt-Cole Chelsea Chapel with the Rev. Glenn Kjellberg officiating. Burial will follow in Mt. Hope Cemetery, Waterloo.

Memorial contributions may be made to Waterloo Village United Methodist church.

Friends may call at the Burghardt-Cole Chelsea Chapel.

Mrs. John Nicolls

Ann Arbor Resident Dies Monday at Chelsea Hospital

Alma Marie Nicolls, 91, of Ann Arbor, died Monday, Feb. 6, at Chelsea Community Hospital.

She is survived by three sons, William G. of Ann Arbor, John B., Jr., of West Bloomfield Hills, and Keith K. of Glen Ellyn, Ill.; five grandchildren; two great-grandchildren; and two sisters, Mrs. Elsa Blockett and Mrs. Clara Johnson of San Diego, Calif. Her husband, John, preceded her in death.

Funeral services will be held today, Feb. 9, 2:30 p.m., at Staffan Funeral Home with the Rev. Carl R. Geider officiating. Burial will follow in Forest Hill Cemetery, Ann Arbor.

ATTENTION

Lyndon Township Residents

An item of business to come before the next township meeting Feb. 21, 1978, is the matter of a kennel being maintained illegally at a private residence on Beeman Rd.

All persons interested in this matter are requested to attend the next meeting, beginning at 7:00 p.m. on the date indicated above.

Concerned Residents of Lyndon Township

NATURAL RESOURCES COMMISSION ACTION

(under authority of Act 230, P.A. 1925, as amended)

LAKE TROUT SPEARING - STATEWIDE BAN

The Natural Resources Commission at its meeting on August 10, 1973, under authority of Act. 230, P.A. 1925, as amended, hereby orders that for a period of five years beginning January 1, 1974, no person shall take lake trout by means of a spear or bow and arrow from any of the waters over which this state has jurisdiction.

NATURAL RESOURCES COMMISSION ACTION

(under authority of Act 230, P.A. 1925, as amended)

INLAND TROUT and SALMON REGULATIONS

The Natural Resources Commission at its meeting August 10, 1973, under authority of Act 165, P.A. 1923, as amended and Act 230, P.A. 1925, as amended, hereby orders that for a period of five years beginning January 1, 1974, no person shall take or attempt to take any species of trout or salmon from any of the inland waters of this state except by hook and line during the open seasons prescribed, and within the minimum size limits and maximum possession limits indicated below.

Statewide open seasons on all streams and designated trout lakes shall be from the last Saturday in April through the last day in September on all trout and salmon. Statewide open seasons on all other inland lakes shall be any time for all trout and salmon. Size limits for brook trout shall be 7 inches; all other trout and salmon shall be 10 inches. The daily limit for trout and salmon shall be five fish single or in combination.

The above regulations apply except that five brook trout may be taken from streams in addition to the combination list of five fish.

Mrs. John A. Palmer

Chelsea Native Dies While Visiting in Minnesota

Bernice Alice Palmer, 77, of Cherokee Village, Ark., died suddenly in Hopkins, Minn., while visiting her daughter. Born in Chelsea on June 12, 1900, she was the daughter of Newton and Carrie Purchase Prudden.

She married John A. Palmer in Chelsea in 1922. He preceded her in death.

Survivors include one daughter, Mrs. John (Jane) Sandefur of Hopkins, Minn.; four grandchildren; two great-grandchildren; and one brother, Dr. Meryl Prudden of Fostoria, O.

Funeral services are still pending. Arrangements are being handled by Strohbeck-Johnson Chapel, 1400 Excelsior Ave., Hopkins, Minn.

JV Volleyball Team Gains Its First Victory

Last Friday Chelsea's junior varsity volleyball team secured its first victory while playing against Milan.

"We showed we can really play well and our serving was excellent," Coach Elaine Raspin reported.

Game scores were 15-3 and 15-4, with Cindy Gerstler (10 points), Marie Klink and Kelly Heuse (6 points), and Cristi Thomsen (4 points) leading the Bulldogs tanks in scoring.


Monday night Chelsea challenged Columbia Central and was handed a tough loss. After coming from behind a 10-14 score to win the first game, 16-14, Chelsea failed to equal that strength in the second game and was defeated, 15-8. In the third game it looked as though Chelsea was going to chalk up its second victory but the team failed to score after gaining a 7-3 lead and was defeated, 15-7.

High scoring servers for the Bulldogs were Marie Klink (9 points), Cristi Thomsen and Cindy Gerstler (6 points), and Michele Clark (4 points).

A suddenly developing hearing loss in only one ear could be a symptom of a serious medical problem, warns hearing specialists. Persons encountering such a situation should immediately consult a medical doctor—preferably an ear specialist.

JV Cagers Roll Over Dexter Tuesday Evening

(Continued from page six) Albrecht with 3 rebounds; and shot; Dan Alber with 2 points; 1 Brad Flanigan with 1 rebound. Chelsea's big game of the season will be tomorrow, Feb. 10, with 2 points and 1 rebound; Karl 6:30 p.m. here against Saline.



Thinking CARPET?
Think SCHNEIDER'S

Visit the wonderful world of carpeting at Schneider's, one of the area's finest, full-service carpet stores, conveniently located in West Ann Arbor on Wagner Road between Jackson and Liberty.

Schneider's carries a broad selection of quality, name-brand carpets at prices consistently among the lowest in the entire area. Try us.

662-9332

SCHNEIDER CARPET CO., INC.

745 S. WAGNER RD. ANN ARBOR

OPEN MON & FRI NIGHTS TIL 8:00 PM

REGISTRATION NOTICE

FOR VILLAGE ELECTION

Monday, March 13, 1978

TO THE QUALIFIED ELECTORS OF THE Village of Chelsea

COUNTY OF WASHTENAW, STATE OF MICHIGAN
Notice is hereby given that, conformity with the "Michigan Election Law," I, the undersigned Clerk, will upon any day, except Sunday and a legal holiday, the day of any regular or special election or primary election, receive for registration the name of any legal voter in said Township, City or Village not already registered who may APPLY TO ME PERSONALLY for such registration. Provided, however, that I can receive no names for registration during the time intervening between the Thirtieth day before any regular, special or official primary election and the day of such election.

NOTICE IS HEREBY GIVEN THAT I WILL BE AT MY OFFICE

Feb. 13, 1978 - Last Day

From 8 o'clock a.m. until 8 o'clock p.m.

The 30th day preceding said election
As provided by Section 498, Act No. 116,
Public Acts of 1954

at Municipal Building, 104 E. Middle St.

For the purpose of REVIEWING the REGISTRATION and REGISTERING such of the qualified electors in said TOWNSHIP, CITY or VILLAGE as SHALL PROPERLY apply therefor.

The name of no person but an ACTUAL RESIDENT of the precinct at the time of registration, and entitled under the Constitution, if remaining such resident, to vote at the next election, shall be entered in the registration book.

Elector Unable To Make Personal Application, Procedure

SEC. 504. Any elector who is unable to make personal application for registration because of physical disability or absence from the Township, City or Village in which his local residence is located, may be registered prior to the close of registration before any election or primary election by securing from the Clerk of the Township, City or Village in which he is located his local residence, duplicate registration cards and requesting such registration cards to be delivered to him by the end of the registration period. The elector shall then deliver the said registration cards to the Clerk of the Township, City or Village before the place of office hours on the last day of registration prior to any election or primary election. The delivery of such registration cards to the Clerk shall constitute the elector's application for registration and the elector shall sign the registration card and designate his title.

Unregistered Persons Not Entitled To Vote

SEC. 491. The incapacity of election at any election or primary election in this State, or in any District, County, Township, City or Village thereof, shall not deprive the vote of any person whose name is not registered in the registration book of the Township, Ward or Precinct in which he offers to vote. (As provided under Act 116, P. A. 1954.)

Transfer of Registration, Application, Time

SEC. 508. Any registered elector may upon change of residence within the Township, City or Village cause his registration to be transferred to his new address by sending to the Clerk a signed request stating his present address, the date he moved thereto, and the address from which he was last registered, or by appearing in person for a transfer. The Clerk shall strike through the last address, ward and precinct number and record the new address, ward and precinct number on the original and duplicate registration cards, and shall place the original registration card in proper precinct file. Such transfers shall not be made after the fifth Friday next preceding any regular or special election or primary election (unless such fifth Friday shall fall on a legal holiday in which event registration transfers shall be accepted during the following day.)

Transfer of Registration On Election Day

SEC. 507. Any registered elector who has removed from one election precinct of a Township, City or Village to another election precinct of the same Township, City or Village and has not recorded such removal with the local Clerk shall execute a transfer of registration request listing the new residence address thereon over his signature, with the election board in the precinct in which he is registered at the next ensuing primary or election. The inspector of election in charge of the registration records shall compare the signature thereon with the signature upon the applicant's registration record and, if the signatures correspond, then the inspector shall certify such fact by affixing his initials on said request. The applicant for transfer, after having signed an application to vote as provided in Section 523 of this act, shall then be permitted to vote in such precinct for that primary or election only. The application for transfer shall be filed with the Township, City or Village Clerk who shall transfer such voter's registration in accordance with the application. When the name of any street in a Township, City or Village has been changed, it shall be the duty of the Township City or Village Clerk to make the change to show the proper name of street in the registration records, and it shall not be necessary for the elector to change his registration with respect thereto in order to be eligible to vote.

Thomas Neumeyer, Village Clerk

BOWLING NEWS

Chelsea Suburban

Standings as of Feb. 1

Dairy Queen	121	63
Frisling Realty	118	58
Fletcher Mobil	110	54
Ricardo's	100	84
Chelsea Drug	98	86
Mark IV Lounge	98	86
Dana De-Lites	90	84
Dancer's	88	96
Chelsea State Bank	84	100
Waterloo Garage	81	103
State Farm	70	114
Chelsea Assoc. Builders	48	136

150 games and over: R. McGibney, 209, 192; M. DeLaTorre, 189, 177, 151; M. Vasas, 178, 178; N. Collins, 179, 161, 159; E. Figg, 189, 162; A. Hocking, 204, 152; D. Keezer, 170, 170; N. Packard, 157, 151, 161; D. McAllister, 181, 156; J. Schulze, 194; R. West, 200; M. Neal, 153; B. Loucks, 185; Bowen, 155, 150; P. Harook, 157; C. Stoffer, 171; J. Buku, 157; A. Bohne, 156, 150; B. Beeman, 156; F. Cole, 160; J. Burnett, 162, 156; C. Collins, 168; G. DeSmith, 190; V. Weber, 155, 176; B. Fike, 155, 159; B. Robeson, 156; P. Schaff, 151; N. Prater, 163; S. Schulz, 158; E. Schulz, 153, 153; E. Neigauer, 152, 178; B. Kuzel, 172, 156; D. Orlovski, 158; M. Bollinger, 152; D. Collins, 154; B. Loucks, 185.

425 series and over: R. McGibney, 540; M. DeLaTorre, 517; M. Vasas, 504; N. Collins, 499; E. Figg, 496; A. Hocking, 493; D. Keezer, 470; N. Packard, 469; D. McAllister, 463; J. Schulz, 453; R. West, 458; M. Neal, 445; R. West, 458; B. Loucks, 438; S. Bowen, 452; P. Harook, 445; B. Kunzelman, 443; C. Stoffer, 441; B. Beeman, 434; J. Speer, 441; V. Weber, 437; F. Cole, 428; G. DeSmith, 430; K. Chapman, 435; J. Burnett, 427; J. Buku, 436.

Senior House League

Standings as of Feb. 6

Wolverine Bar	31	4
Chelsea Grinding	28	9
Mark IV	24	11
McCalla's Feeds	24	11
Village Motors	17	11
S. J. Custom	20	15
K. of C.	16	12
Frank Grohs Chevrolet	18	17
Wash. Crop Service	18	17
Walt's Barber Shop	18	17
Schneider's	17	18
Captains Table	14	21
Central Fibre	14	21
Steele's Heating	13	22
Sylvan Center	9	19
Bauer's Builders	9	19
Gambles	11	24
Deansboro	11	24

600 series: W. Beeman, 654; D. O'Dell, 611; J. Harook, 620; M. Poertner, 628; N. Fahrner, 641. 525 series: D. Murphy, 534; J. McAllister, 530; P. Kelly, 528; L. Bauer, 533; R. Buckingham, 528; L. Sanderson, 592; W. Sisco, 573; B. Ervin, 592; G. Burnett, 526; H. Burnett, Jr., 539; M. McAllister, 542.

210 games: B. Ervin, 213; W. Sisco, 218; L. Sanderson, 221, 213; W. Beeman, 215, 267; P. Kelly, 212; D. O'Dell, 229; J. Harook, 213, 212; M. Poertner, 226; N. Fahrner, 214, 258.

SERVING SANDWICHES

from 11:00 a.m. till 2:00 a.m. Mon. thru Sat.
Open Sunday 12:00 Noon Till 11 p.m.

BEER & WINE CARRY-OUT

FOOD CARRY-OUT

MARK IV LOUNGE

1180 M-52 Phone 475-1951 Chelsea

OPEN BOWLING

MONDAY thru FRIDAY
10:30 a.m. to 6 p.m.

SATURDAY
11 a.m. to 12 midnight

SUNDAY
12 noon to 5:30 p.m.

CHELSEA LANES, Inc.

1180 M-52 Ph. 475-8141

Junior Swingers

Standings as of Feb. 4

Boone's Farm V	58	22
Whitaker's	53	27
Bad Company	52	28
Boogie Brothers	52	28
Bowling Wizards	49	31
Lightning	47	35
Ganja Oil Co.	41	39
Roadrunners	41	39
Pin Strickers	37	41
Screamers	34	46
Gutter Dusters	31	45
Team 5	29	51
Team 11	25	55

Girls, high game, 150 and over: A. Powell, 165, 175, 185; D. Bohl, 184; M. Northrup, 177; T. Alexander, 171, 150; M. Alexander, 158, 154; D. Steinhaw, 155; T. Schulze, 152.

Girls, high series, 400 and over: A. Powell, 525; M. Alexander, 435. Boys, high game, 175 and over: J. Vogel, 191; R. Stoddard, 187; K. Hegadorn, 182; G. Packard, 175.

Boys, high series, 475 and over: G. Packard, 506; K. Hegadorn, 502.

Unknown League

Standings as of Feb. 1

Streakers	59	59
Independents	86	68
Shady Ladies	83	71
Strikers	79	76
Fascinating "5"	61	93
Pin Dusters	58	96

425 and over series: J. Lonskey, 434; D. Verwey, 425; M. J. Gips, 458; B. Beeman, 454; J. Smith, 431; S. Steele, 480; J. Fitzsimmons, 485.

140 and over games: J. Lonskey, 152, 150; D. Verwey, 148, 151; M. J. Gips, 160, 161; J. Sweet, 140; D. Taylor, 140; C. Sande, 161; B. Beeman, 171, 154; D. Lukasiak, 148, 150; J. Smith, 167, 141; D. Bentley, 149; C. Fleischmann, 140, 142; J. Tuttle, 164; C. Colvin, 148; M. Adams, 142; S. Steele, 162, 163, 165; J. Fitzsimmons, 211, 168; D. Weiss, 161.

Seven Point Mixed

Standings as of Feb. 6

C-Ber's	105	56
Grass Lake Auto	98	68
Strike Outs	95	66
Team No. 1	94	67
Jiffy Mixes	87	83
Wild Women	74	87
Utrogs	73	88
DeVaulder's	72	89
Andy's Raiders	71	90
Elliott & Sons	45	116

High team series: Utrogs, 1,836; Grass Lake Auto, 1,812. High men series: P. Fletcher, 515; R. Widmayer, 510.

High women series: D. Bycraft, 505; V. Guenther, 486; P. Scherdt, 473.

High team game: Utrogs, 643; Grass Lake Auto, 642; Team No. 1, 613; C-Ber's, 613.

High men game: P. Fletcher, 194.

High women game: V. Guenther, 187; D. Bycraft, 188; J. Farley, 174; P. Montgomery, 174.

Chelsea Lanes Mixed

Standings as of Feb. 3

Wire & Fire	93	54
Fox Point Flashes	89	58
Accra Gauge	83	64
Ken's Glass	82	65
Hawley's Truck repair	80	67
Fireballs	78	69
VFW	73	74
Ann Arbor Centerless	72	75
Bollinger's Sanitation	72	75
The Bandits	69	78
Roadrunners	64	83
Question Marks	62	85
Get Downers	57	90
Federal Screw Outlaws	55	92

Women, 425 series and over: S. Ellenwood, 432; D. Hawley, 427; B. Wisniewski, 431; J. Norris, 514.

Men, 475 series and over: D. Ellenwood, 534; K. Finfrock, 519; E. Vassas, 526; A. Wisniewski, 502; N. Lee, 520.

Women, 150 games and over: S. Ellenwood, 155; P. Weigand, 150; E. Finfrock, 164; D. Hawley, 158; J. Grobask, 181; B. Finfrock, 167; B. Wisniewski, 157; J. Norris, 188, 162, 164; L. Sheppard, 165; D. Oosterle, 181.

Men, 175 games and over: D. Ellenwood, 197; K. Finfrock, 184, 179; E. Vassas, 183, 184; A. Wisniewski, 233, 197; G. Kent, 191; J. Norris, 177; N. Lee, 187, 182.

Sunday Night Leftovers

Standings as of Feb. 5

Four K's	55	22
All in the Family	54	23
C & M	46	31
Team No. 7	42	35
Unpredictables	40	37
Pin Seekers	39	38
Team No. 10	38	39
Kissin Cousins	38	39
Twins	37	40
Clean Sweeps	37	40
Krautski's	36	41
Wuz Nots	36	41
Team No. 5	34	43
Rascals	32	45
Serendipity	27	50
The Blue Bloods	25	52

Women, over 150: J. Collins, 151, 152; N. Morgan, 152; S. Herter, 155; L. Clarke, 158, 198; M. Hovet, 162; V. Morrell, 170; B. Herter, 172; J. Kruger, 189; R. Clarke, 204.

Men, over 175: T. Dittmar, 178, 177; R. Fick, 183; A. Roskowski, 184; S. Morgan, 192; J. Jedele, 192; R. Brasso, 194; H. Morrell, 194; L. Herter, 200.

Rolling Pin League

Standings as of Feb. 7

Grinders	64	28
Moppy Uppers	54	38
Egg Beaters	53	39
Sugar & Spice	50	42
Peachers	47	45
Pots	47	45
Spiders	46	46
Brfoms	46	47
Mixers	43	48
Jelly Rollers	43	48
Sporadic Spatulas	43	49
Coffee Cups	43	49
Kookie Kutters	43	49
Kitchen Kapels	42	50
Blenders	39	53
Jolly Mops	34	58

500 series: J. Edick, 518; G. Clark, 536.

425 and over series: G. Smith, 471; J. Smith, 491; M. Biggs, 472; B. Torrice, 432; K. Hamel, 437; S. Parker, 446; J. Myers, 449; S. Bowen, 498; E. Williams, 431; B. Roberts, 479; D. Thompson, 428; R. Dils, 474; M. Cox, 428; E. Heller, 458; P. Wurster, 427; J. Shepherd, 469; D. Richmond, 448; P. Harook, 462; B. Wolfgang, 493; T. Doll, 426; P. Poertner, 472.

150 and over games: M. Kolar, 150; G. Smith, 160, 186; J. Smith, 179, 183; M. Biggs, 191; K. Hamel, 164; S. Parker, 165, 150; P. Cook, 155; J. Myers, 189; J. Edick, 168, 167, 183; S. Bowen, 188; E. Williams, 154; D. Thompson, 150, 150; B. Roberts, 171, 163, 166; R. Dils, 171, 167; D. Neuman, 153; D. Klink, 150; G. Clark, 241, 150; E. Whitaker, 151; M. Cox, 160; E. Heller, 178; R. Musbach, 163; P. Wurster, 156; S. Ringe, 162; G. Brier, 156; J. Gerstler, 154; D. Farrington, 154; R. Foster, 152; J. Shepherd, 169, 165; R. Enbody, 172; D. Richmond, 169; P. Harook, 173, 153; A. Grau, 159; B. Wolfgang, 181, 163; T. Doll, 178; P. Poertner, 163, 160.

Bulldogs Mixed

Standings as of Feb. 2

Spadafore's Store	52 1/2	31 1/2
D-D Deburrring	50 1/2	33 1/2
Rent-A-Barn	45 1/2	38 1/2
Richardson Asphalt	43	41
Goofers	42 1/2	41 1/2
B-F-C	41	43
Smith Service	39	41
Steele's Heating	38 1/2	45 1/2
DuRussel, Inc.	35	45
Norm's Sales	28 1/2	55 1/2

Men, high games and series: B. Bush, 207, 188, 555; D. Buku, 209, 199, 540; D. George, 221, 516; B. Jackson, 188, 190, 514; D. Barnhill, 207, 509; P. Renton, 188, 503; J. Kyle, 502; D. Milliken, 180.

Women, high games and series: M. Stafford, 224, 189, 527; B. Bush, 175; J. Kaiser, 174; M. George, 174; J. Pagliarini, 173; B. Houle, 170.

Leisure Time League

Standings as of Feb. 2

Unpredictables	47	33
Afternoon Delights	45 1/2	34 1/2
Misfits	45 1/2	34 1/2
Sugar Stogies	44 1/2	35 1/2
Sugar Loafers	43 1/2	36 1/2
Crackpots	41	39
Roadrunners	40	40
Holy Rollers	36 1/2	43 1/2
Lady Bugs	36	44
Slowpokes	35	45
Mamas & Grandmas	34 1/2	45 1/2
Rug Rats	31	49

500 series: C. Hoffman, 508; J. Cronkrite, 542.

400 series: M. R. Cook, 411; L. Longe, 435; Z. Jobe, 401; L. Haller, 400; D. Thompson, 457; S. Friday, 443; K. Haywood, 439; G. Wheaton, 449; E. Williams, 409; M. O'Donnell, 462; B. Tison, 410; S. Weston, 416; S. LaRoche, 484; R. Forner, 421; P. Muncer, 467; S. Roehm, 412; R. Musbach, 437; S. Bowen, 440.

Games 140 and over: M. R. Cook, 173; L. Longe, 142, 159; Z. Jobe, 154; L. Haller, 147; D. Thompson, 152, 161, 144; S. Friday, 154, 151; K. Haywood, 148, 171; G. Wheaton, 177; B. Check, 154; E. Williams, 153, 145; N. Primrose, 147; M. O'Donnell, 145, 162, 155; C. Hoffman, 168, 167, 176; S. Weber, 151; B. Tison, 145; E. Swanson, 157; V. Meyer, 144; S. Weston, 157; M. Brown, 140; D. Clark, 183, 153; S. LaRoche, 157, 159, 168; R. Forner, 144, 150; B. Robinson, 153; J. Cronkrite, 168, 202, 172; P. Muncer, 172, 147, 148; S. Roehm, 145, 142; R. Musbach, 162, 143; S. Bowen, 143, 158.

Charlie Brown & Snoopy Peanut League

Standings as of Feb. 4

Dana Chargers	44	16
Red Barons	37 1/2	22 1/2
Snoopy Raiders	37	23
Road Runners	30	30
Bowling Bulldogs	29	31
Bad News Bears	28 1/2	31 1/2
Super Stars	22 1/2	37 1/2
Cool Cats	11 1/2	48 1/2

Games 70 and over: L. Walton, 84, 112; J. Willian, 81, 82; D. Collins, 158, 109; D. Buku, 84; R. Loucks, 78; T. Weir, 88, 88; H. Morrell, 152, 165; N. Case, 84; C. Schulze, 110, 128; C. Alexander, 80, 87; T. Harook, 126, 136; B. Hamel, 78, 71; T. Lisznyai, 70, 78; J. Petsch, 78; C. Baker, 75;

KEN OSBORNE INSULATION CONTRACTOR

- ★ Blown in side walls and attic.
- ★ R = 4.17 per inch.
- ★ Resists fire and moisture.
- ★ Lightweight.
- ★ Meets Federal Specification HH-1-515.
- ★ This insulation made from 100% wood fibres.

KEEP COOL & SAVE FUEL. DON'T WAIT TOO LONG IT'LL COST MORE LATER.

35 years in the building and insulation business in this area. FREE ESTIMATES

KEN OSBORNE

Ph. (517) 851-7497 ALUMINUM STORM WINDOWS AND DOORS

Get Out of That Rut . . .

DON'T BE A "STUCK IN THE MUD"

Call

M & M GRAVEL CO.

Repair Your Old Driveway Or Build A New One!

WE CAN DO THE JOB . . . WE HAVE WHAT IT TAKES!

- ★ ROAD STONE
- ★ BASE STONE
- ★ DRAINFIELD STONE
- ★ WASHED SAND
- ★ PEA STONE
- ★ FILL DIRT

PHONE 475-1941

Or after 4 p.m. (313) 498-2866

Located 4 Miles North of Chelsea M-52 and ROE ROAD

PIT HOURS: 8 to 5 Mon. thru Fri. 8 to 12 Sat.

Kathleen Schafer On JCC Dean's List

Standings as of Feb. 2

Kathleen Schafer, of 513 S. Main St., was among 588 students recently named to the fall semester Dean's List at Jackson Community College, Jackson.

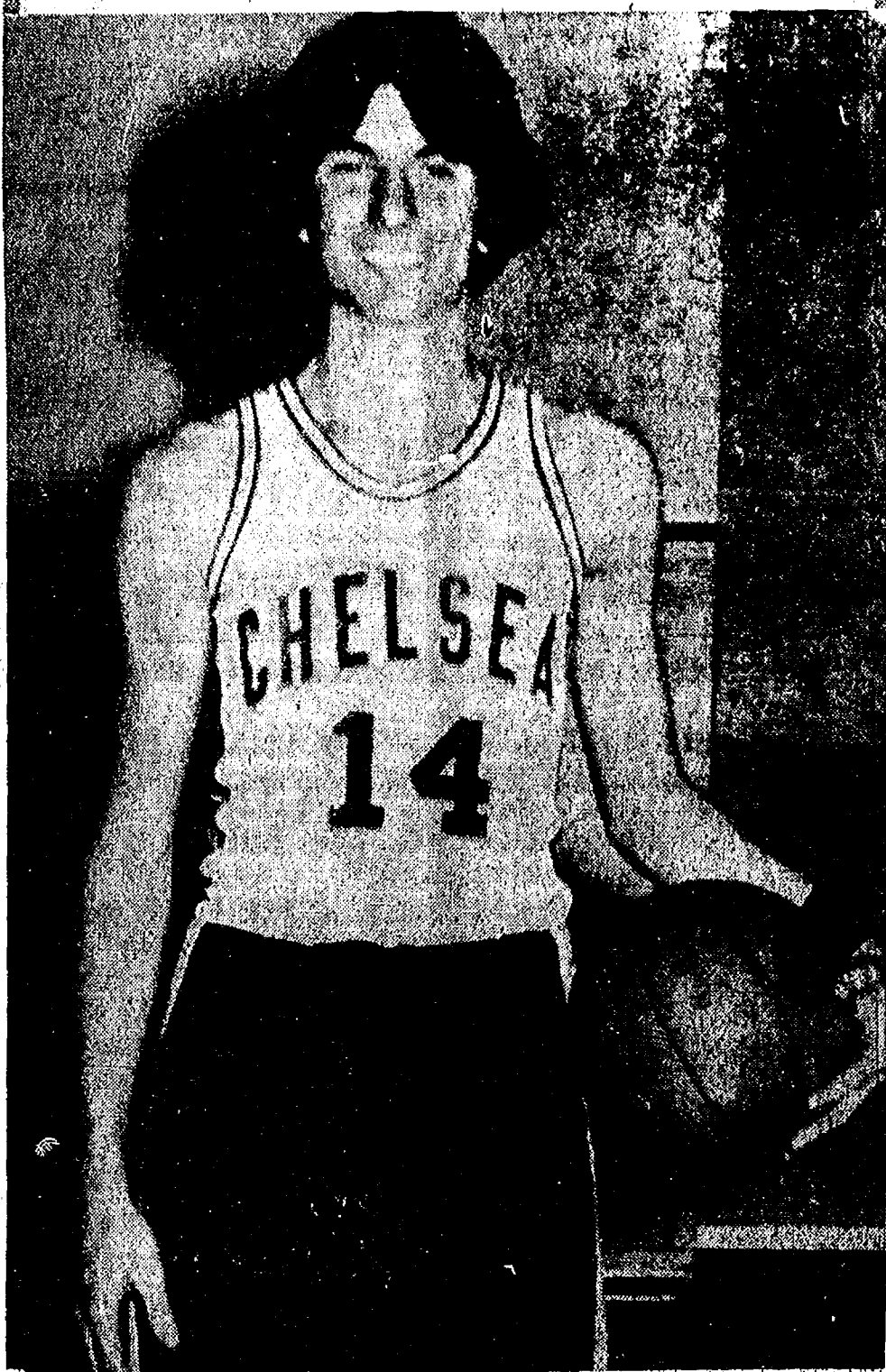
The Dean's List honors students for their outstanding academic achievement.

Avoid purchasing foods that are packed as individual servings. Generally speaking, the extra packaging boosts the price.

B. Robeson, 81; M. Anderson, 101; P. Shures, 76; D. Thompson, 119, 107; J. Waldyke, 72; B. Neverth, 93.

Series 100 and over: L. Walton, 198; T. Rowe, 128; J. Settle, 102; J. Willian, 163; Dan Collins, 267; D. Buku, 146; R. Lotcks, 141; T. Weir, 178; H. Morrell, 307; N. Case, 151; C. Schulze, 238; C. Alexander, 177; T. Harook, 262; B. Hamel, 150; M. Ryan, 116; T. Lisznyai, 145; K. Lisznyai,

Cager of the Week



GARY DILS (14) a newcomer to Chelsea's varsity basketball squad this season, has spent most of the year sidelined by injuries. The 6'0", 155-lb. guard broke his shooting arm in the fall, and it wasn't until Chelsea's first week of play that the cast was removed. Knee problems have also troubled the cager this year. However, according to Coach Robin Raymond, Dils is now regaining the confidence that led to his selection as Most Valuable Player his freshman year, and an award for Most Points Scored as a junior varsity player. "We're looking forward to a lot of help from him during the remainder of the season," Coach Raymond said. Although Dils has recently begun practicing as a forward in addition to his usual position as a guard, his greatest contributions thus far have come while playing in the latter position. Dils' best performance this season was against Milan last Friday. "I was aggressive in that game," he explained. He also named Chelsea's contest with Milan the team's best to date, defending his choice with the following words: "We came out strong, were ready to play, and showed that in the first half." As a member of the varsity squad, Dils views his responsibilities to the team as "mainly helping to get the team going, and being a leader on the team." He predicted Chelsea would upset Saline tomorrow because "we're ready to play them," and anticipates a move into the conference lead based on optimism that Milan will also be defeated Friday. Dils, who likes a fast-paced form of basketball because "it gets you moving and generates enthusiasm," also plays baseball for Chelsea High. He is the son of Mr. and Mrs. Art Dils, of 650 N. Main St.

Boy Scouts Mark 68th Anniversary

Area residents are again reminded that February marks the 68th anniversary of Boy Scouts of America, and the 48th birthday of the Cub Scout program. During this month, area scouts will have several opportunities to make the public aware of their organization. Special events began Feb. 4 with window displays. Troop 476 is currently exhibiting scout projects in the Pontiac showroom window on W. Middle St., while Pack 435 has a window display at Dancer's.

The average farm worker now produces enough to feed and clothe himself and 56 other persons, in contrast to only 15 other people in 1950.

School Board Briefs

At a regular meeting of the Board of Education Monday, Feb. 6, present were Tobin, Feeney, Heller, Schafer, Hodgson, Superintendent Cameron, Business Manager Mills, Principal Williams and Assistant High School Principal Schave.

Meeting called to order at 9 p.m. by Vice-President Tobin. The minutes of Jan. 23 meeting were approved as read.

Trustee Feeney reported that there are 105 applicants for the position of Superintendent of Schools. The board is now in the process of studying the applications to determine those applicants to be interviewed.

The board granted a general leave of absence to Kathy Cambi for the remainder of the 1977-78 school year beginning on Feb. 13. Business Manager Mills was directed to file the necessary applications or papers to apply for Federal reimbursement for snow removal costs.

Principal Williams and Assistant High School Principal Schave reported that there are some vacancies in the Nurse Aide program. Residents of the district who are interested in taking the course may contact the school for information.

Meeting adjourned at 9:40 p.m.

SCHOOL LUNCH MENU

Week of Feb. 13-17

Monday—Hamburger on a bun, french fries, cole slaw, gingerbread with topping, milk.
Tuesday—Spaghetti with cheese, mixed vegetables, hot roll and butter, pink applesauce, cup cake, milk.
Wednesday—Goulash, green beans, biscuit and butter, candied apple, crispie cookie, milk.
Thursday—Ham and cheese on a bun, salad of the day, potato chips, strawberry short cake, milk.
Friday—No school.

Two Chelsea Students On WMU Dean's List

Two students from Chelsea were among more than 1,600 students included on the recent fall semester dean's list at Western Michigan University, Kalamazoo. To be eligible, a student was required to have compiled a 3.5 grade point average in 14 hours of graded work. A 4.0 average denotes all A grades. Chelsea students named to the list were Steven D. Bennett, of 8215 Beeman Rd., who earned all A's; and Brian D. Smith, of 7876 Werkner Rd. Of the 1,600 students on the dean's list, some 378 received all A grades during the semester.

Gary Packard Nominated for USAF Academy

Congressman Bob Carr (D-8th District) has announced the nomination of Chelsea High School senior, Gary A. Packard, 19678 North Territorial Rd., to the United States Air Force Academy. He is the son of Mr. and Mrs. Gary A. Packard and the grandson of Mr. and Mrs. Mac Packard.

The individual academies—the U.S. Naval Academy at Annapolis, Md., the U.S. Air Force Academy at Colorado Springs, Colo., and the U.S. Military Academy at West Point, N.Y.—will make the final selections from among the nominees. One appointment is available for the Air Force Academy, one for the Military Academy, and two for the Naval Academy from the Sixth Congressional District, which covers most of Ingham, Jackson, Livingston and Washtenaw counties.

Selected nominees will enter the academies this summer after completing high school.

"It is good to know that students of this quality are interested in serving their country and in pursuing a military career," Carr said.

Schools To Close For Patriot's Day

Chelsea schools will be closed Friday, Feb. 17 and Monday, Feb. 20, for Patriot's Day. The two-day vacation period is scheduled annually to celebrate the birthdays of Abraham Lincoln and George Washington.

Activities Planned For Cancer Crusade

Although April is officially designated Cancer Crusade month, the Chelsea Chapter of the American Cancer Society already has its plans for the spring season in full swing.

Instrumental in the planning are this year's local Cancer Crusade co-chairmen, Mrs. S. Charles Mattoff and Mrs. Richard McCalla, who recently welcomed returning board members, Mrs. Agnes Boylan, treasurer; Mrs. Vito LaBarbara, hostess chairman; Mrs. James Krichbaum, publicity co-chairman; Mrs. Dale Schumann, education; and Mrs. Edwin Waught, fashion show co-ordinator.

Newcomers to the board this year are Sandy Speaker, education director, Washtenaw County Unit of the American Cancer Society; Mrs. L. E. Colombo, secretary; and Mrs. Robert Barlow, publicity co-chairman.

Ruth LaBarbara will host a kick-off brunch for the local Cancer Crusade on March 16 to acquaint those invited with the many fundraising possibilities. Any individual in the community interested in hosting an event during the crusade is asked to contact any board member either prior to, or following, the brunch.

A quilting bee in March heads the list of those fund-raising events already organized, and will be followed by the annual Fashion Show and Luncheon in April, featuring apparel from Vogel's Department Store. The local Cancer Crusade will reach its peak

in May with the annual Bike-A-Thon. At various intervals during the month of March, April and May, card parties, luncheons, teas, and wine tasting parties will also be held.

Pucksters Lose To Powerful Jackson Parkside

Chelsea's hockey team did everything right strategically in a game against Jackson Parkside Sunday at the Jackson Ice Arena, but an inability to find the net cost the Bulldogs the game as the powerful Parkside Eagles skated to a 3-1 win.

Parkside's Brian Day scored twice for his team while Chelsea's only point came on an unassisted goal by Steve Check.

This Sunday, Feb. 12, Chelsea will go up against another strong team, Jackson High school. The game will begin at 3 p.m. in the Jackson Ice Arena.

"Our boys really have to show their fans what they are made of, playing Parkside and Jackson back-to-back like this," Chelsea Coach Jerry Ringe announced. "We showed the fans we could skate with Parkside, and I know the boys will be up for our game against Jackson Sunday."

EGGS TOUGHEN
Cooked egg whites toughen when frozen.



ALBUMS
Now Available at

HEYDLAUFF'S

113 N. MAIN ST., CHELSEA

We Are Running A
SPECIAL ON ALL CUTS OF BEEF
Call Us and Ask
About Our Prices!

DUNBAR'S DEXTER LOCKER

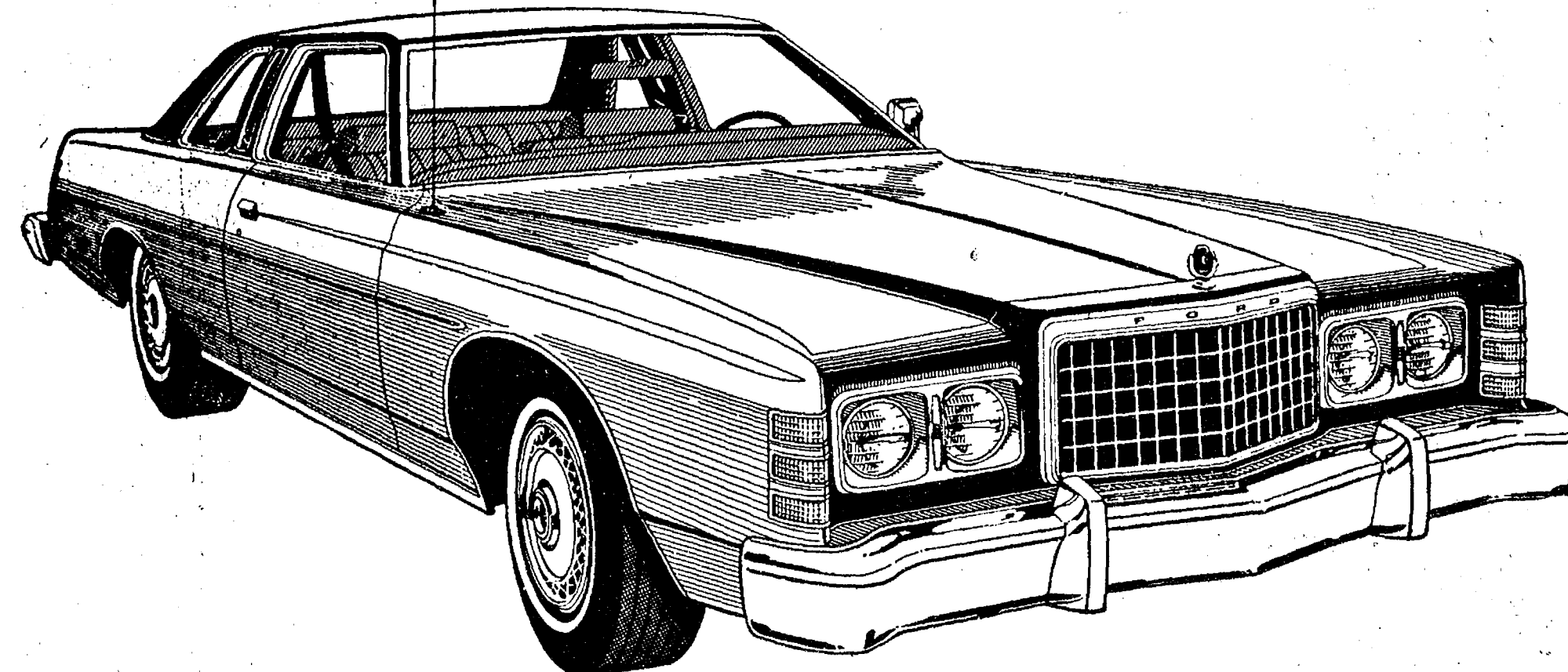
PAUL DUNBAR, Owner

8083 Main St., Dexter

Ph. 426-3466

A Standard Want Ad Gets Results!

ONE OF THE LAST TRADITIONAL FULL-SIZE FAMILY CARS 1978 FORD LTD



17* COMFORTABLE MILES PER GALLON

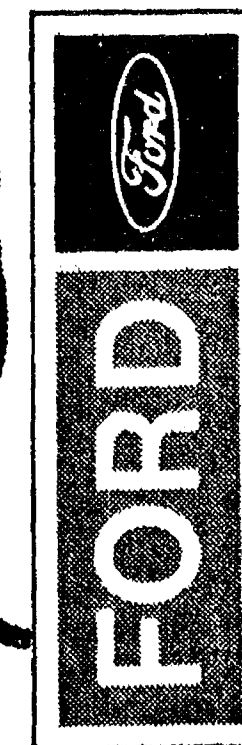
With these standard features that give Ford LTD great value.

- Automatic transmission
- Power steering
- Power front disc brakes
- 302 CID V-8
- Deep-well trunk
- Vinyl insert bodyside moldings
- Room for 6 people
- Cut pile carpeting
- DuraSpark ignition

22*/15*
MPG HWY MPG CITY

*EPA estimates for standard 5 liter engine: for combined city/highway (17 mpg) and for city (15 mpg) and highway (22 mpg). Individually. Naturally your mileage will vary depending on your car's condition, optional equipment, and how and where you drive.

ECONOMY STARTS AT YOUR FORD DEALER



SNOW DISASTER SALE!

We've never heard of such a sale before, but here it is! We must clear out dozens of pieces so we can repair our storm-damaged building.

**FURNITURE - APPLIANCES
TELEVISIONS**

Some with slight dents, scratches or water marks. All being offered at big savings for quick sale.

OUR LOSS CAN BE YOUR GAIN!

KROEHLER, BASSET, TELL CITY, DIN AIRE FURNITURE & LAMPS
FRIGIDAIRE, MAGIC CHEF, KITCHENAID, EUREKA APPLIANCES
ZENITH TELEVISIONS, RADIOS, STEREOS.

MEABON'S TV, FURNITURE & APPLIANCES
1170 M-52, Chelsea Ph. 475-1666

PALMER MOTOR SALES, INC.

CHELSEA, MICHIGAN



get to know us...
WE CAN HELP YOU SAVE ON YOUR FOOD BILL!

Open Daily 8 to 10
Sunday 9 to 9

- ★ **QUALITY PRODUCE**
- ★ **QUALITY MEAT**
- ★ **COLD BEER, WINE, LIQUOR**
- ★ **LOTTERY TICKETS**
- ★ **SIDES OF BEEF**
- ★ **FRUIT BASKETS**
- ★ **DRY CLEANING**
- ★ **PHOTO PROCESSING**
- ★ **VARIETY AT LOW PRICES**

TUESDAY, FEB. 7TH



Polly's

MASTER MARKETS

6 CONVENIENT LOCATIONS

201 PARK AVE. V.L.
1821 SPRING ARBOR RD.
960 NORTH WEST AVE.
1809 EAST MICHIGAN
1101 M-52, CHELSEA
3001 EAST MICHIGAN



U.S.D.A. CHOICE
CHUCK ROAST
Blade Cut
LB. **78¢**



BONELESS
PORK ROAST
Butt Portion
LB. **98¢**

U.S.D.A. CHOICE
CHUCK STEAK
Blade Cut
LB. **88¢**

U.S.D.A. CHOICE ARM-CUT
SWISS STEAK
BONELESS
VEAL ROAST
PATTI JEAN
CORNISH HENS

LB. **98¢**
LB. **\$1.48**
LB. **78¢**

FARMER PEET EXTRA LEAN
PORK STEAK LB. **\$1.18**
EXTRA LEAN
PORK CUTLETS LB. **\$1.28**
EXTRA LEAN
PORK HOCKS LB. **68¢**



GRADE A QUARTERED
FRYER BREAST LB. **78¢**
GRADE A QUARTERED
FRYER LEGS LB. **68¢**

100% PURE BEEF	GROUND CHUCK	LB.	98¢	U.S.D.A. CHOICE BONELESS	STEW MEAT	LB.	\$1.28
U.S.D.A. CHOICE BONELESS	CHUCK ROAST	LB.	\$1.28	BREADED	VEAL PATTIES	LB.	\$1.18
FOSTER GRADE A	DUCKS	LB.	98¢	ICELANDIC BATTERED	FISH	LB.	\$1.48
GUNSBERG	CORN BEEF	LB.	\$1.28	ICELANDIC	OCEAN PERCH	LB.	\$1.48
HERRUD	BRAUNSWEIGER	LB.	68¢	HERRUD SLICED	BOLOGNA	LB.	98¢
DINNERBELL BONELESS	HAM	LB.	\$1.59	FARMER PEET	HOT DOGS	LB.	98¢
FARMER PEET	LUNCH MEAT	LB.	98¢	FARMER PEET	RING BOLOGNA	LB.	98¢
FARMER PEET	CHIPPED MEAT	3-OZ.	39¢	FARMER PEET	BACON ENDS	3-LB.	\$2.09

FARMER PEET
SMOKED PICNICS
LB. **69¢**

Year of the Horse-4676



Join in the CHINESE NEW YEAR CELEBRATION!

LA CHOY CHOW MEIN

NOODLES

2 5-OZ. CANS **89¢**

LA CHOY
SWEET & SOUR PORK

15-OZ. **\$1.19**

GRADE A
MIXED FRYER PARTS
LB. **48¢**

LA CHOY
BI-PAK
CHOW MEIN DINNERS

42-OZ. **\$1.19**

LA CHOY
CHICKEN or BEEF
CHOW MEIN
16-OZ. **79¢**

LA CHOY
EGG ROLLS

• SHRIMP
• LOBSTER
• CHICKEN
6 1/2-OZ. **49¢**



LA CHOY
FRIED RICE with MEAT
75¢

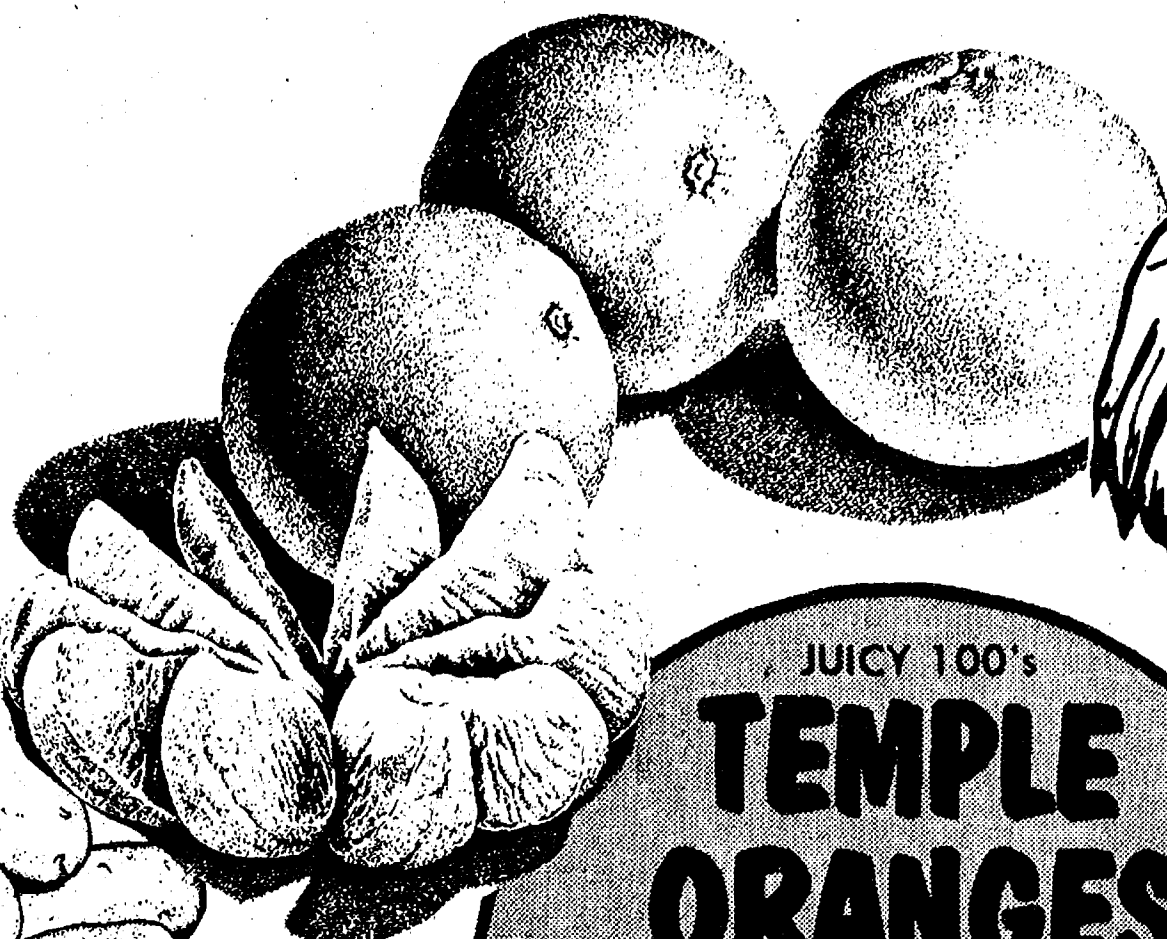


TUESDAY, FEB. 7TH

Polly's
MASTER MARKETS

6 CONVENIENT LOCATIONS
201 PARK AVE. V.L.
1821 SPRING ARBOR RD.
940 NORTH WEST AVE.
1809 EAST MICHIGAN
1101 M-52, CHELSEA
3001 EAST MICHIGAN

U.S. NO. 1 MICHIGAN
POTATOES
\$1.19
20-LB. BAG



JUICY 100's
TEMPLE ORANGES
89¢
DOZEN

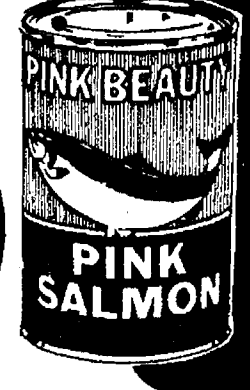


FRESH 10-SIZE
PINEAPPLE
69¢
EA.

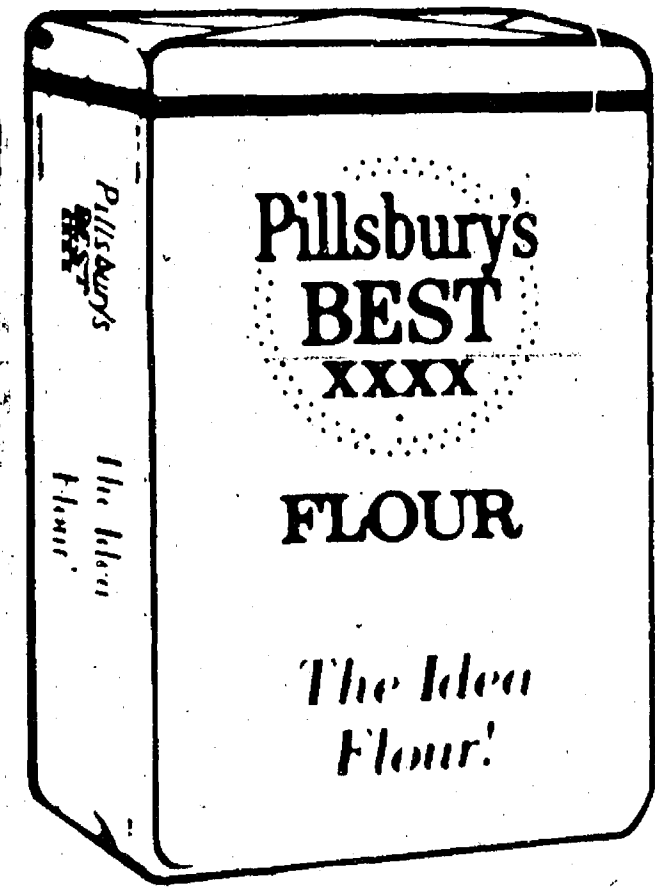
SAVE 20¢ WITH IN-STORE COUPON
BIG TATE
INSTANT POTATOES
79¢
16-OZ.

SAVE 26¢ WITH IN-STORE COUPON
CRISCO OIL
\$1.39
38-OZ.

SAVE 40¢ WITH IN-STORE COUPON
PINK BEAUTY
PINK SALMON
\$1.49
15½-OZ.



U.S. NO. 1
JONATHON APPLES 3-LB. BAG **69¢**
FRESH
GREEN ONIONS 2 for **39¢**
FRESH
COLE SLAW LB. **49¢**



SAVE 12¢ WITH IN-STORE COUPON
PILLSBURY'S BEST XXXX FLOUR
59¢
5-LB. BAG

2-LITER COKE
TAB, SPRITE or FRESCA
79¢
67.4 OZ. N.R.'s



BUY 2 • SAVE \$1.00 WITH IN-STORE COUPON
MORTON SOFTENER PELLETS
\$1.79
40-LB.

Freshlike VEGETABLE SALE!



4 12-OZ. CANS
for **\$1**

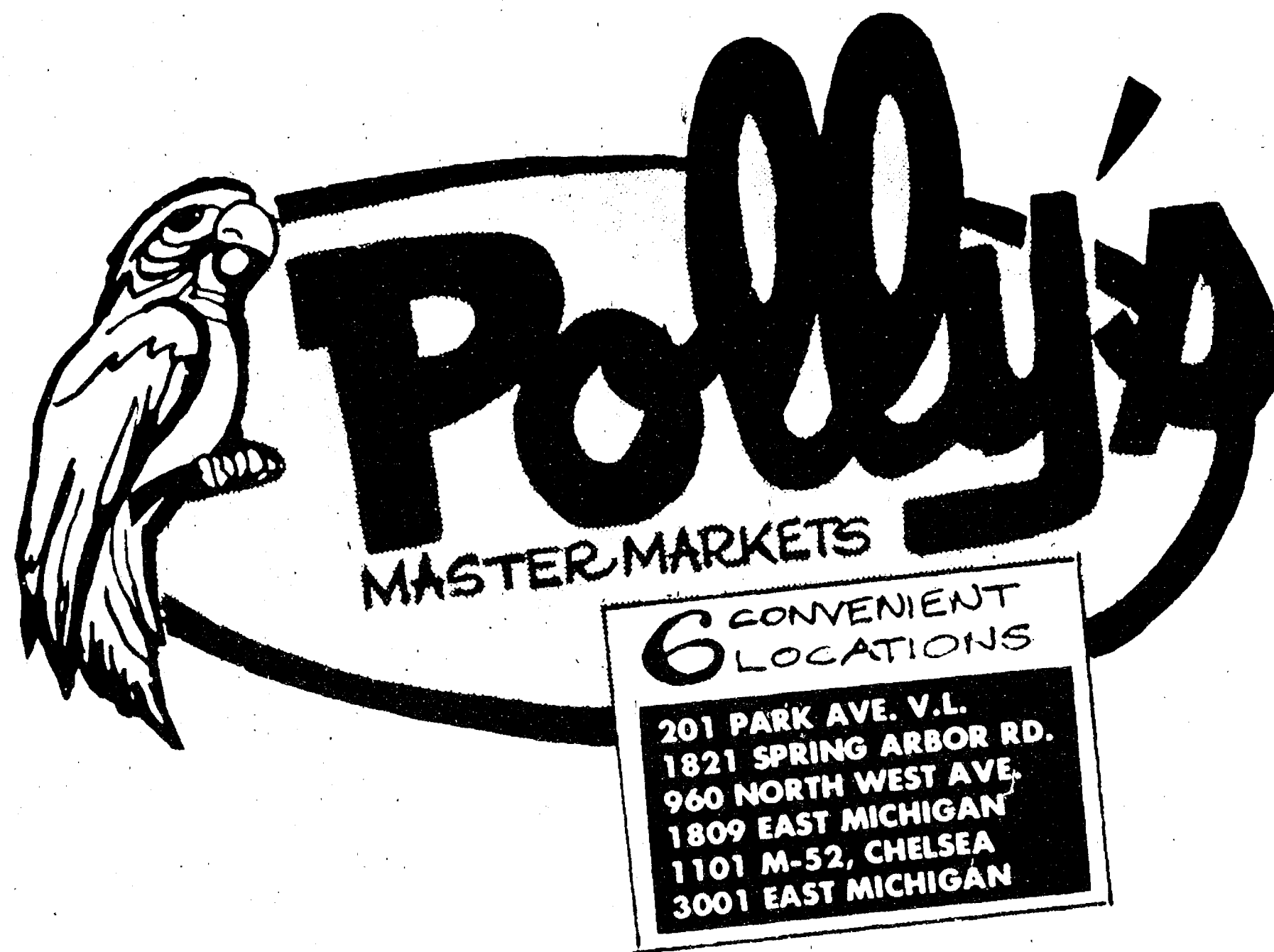
BUY 2 • SAVE 28¢ WITH IN-STORE COUPON
BREAST O' CHICKEN LIGHT
CHUNK TUNA 6½-OZ. **59¢**
HOL SUM **SANDWICH BREAD** 2 24-OZ. LOAVES **89¢**
BAMA **STRAWBERRY JAM** 32-OZ. **\$1.19**
SAVE 30¢ WITH IN-STORE COUPON
GLAD **TRASH BAGS** 10-CT. **89¢**
SCOT LAD **WHOLE TOMATOES** 29-OZ. **49¢**
ALL VARIETIES **ARCHWAY COOKIES** 10¢ OFF
SAVE 20¢ WITH IN-STORE COUPON
HELLMAN'S **SPIN BLEND** 32-OZ. **83¢**
BANQUET PEACH or **APPLE PIES** 8-IN. **49¢**
HARTLAND **MAPLE SYRUP** 24-OZ. **89¢**
SAVE 14¢ WITH IN-STORE COUPON
HUNTS **KETCHUP** 26-OZ. **69¢**

SAVE 30¢ WITH IN-STORE COUPON
GLACIER CLUB ICE CREAM
79¢
HALF-GALLON

BANQUET BUFFET SUPPERS
Beef Stew, Chicken/Dumplings, Turkey, Veal Parmigian, Noodles and Chicken or Beef
\$1.09
32-OZ.

Thank You

FOR SHOPPING AT...



WHERE WE ARE
HAPPY TO.....

save YOU MONEY!